

To connect to ecf2 via Linux (and this is a secure, OSU-acceptable method), do this ...



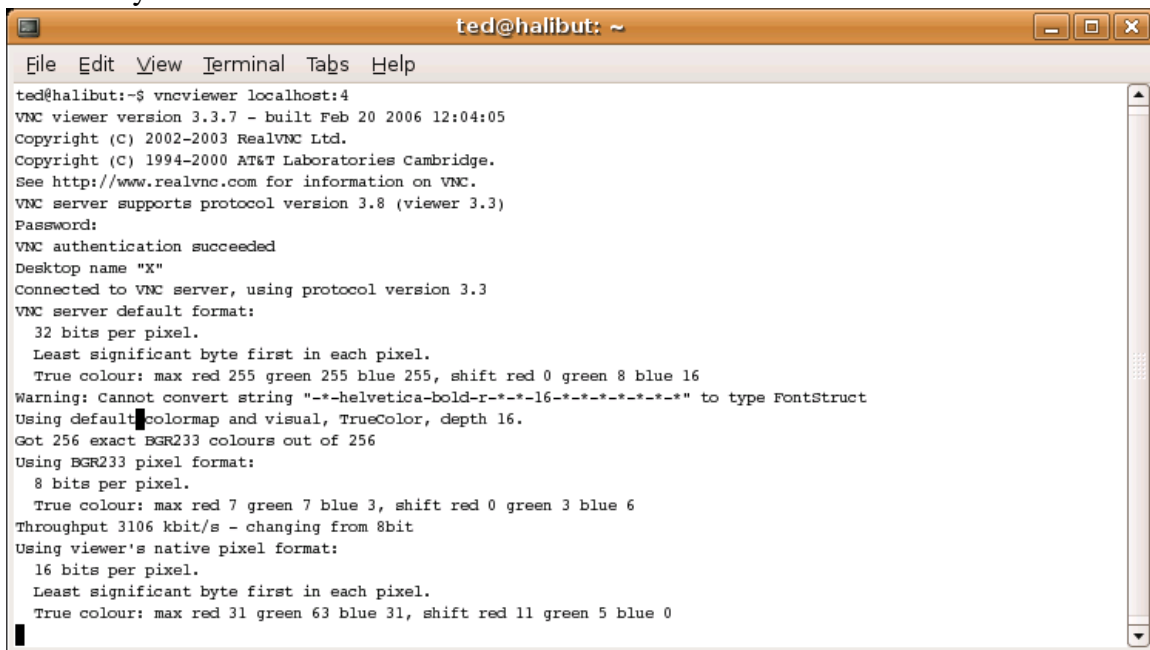
```
ted@halibut: ~  
File Edit View Terminal Tabs Help  
ted@halibut:~$ ssh ecf2.osuosl.org  
Password:  
Last login: Thu Aug 2 12:19:04 2007 from c-24-21-55-189.hsdl.mn.comcast.net  
Have a lot of fun...  
ted@ecf2:~$ vncserver  
  
New 'X' desktop is ecf2:4  
  
Starting applications specified in /home/ted/.vnc/xstartup  
Log file is /home/ted/.vnc/ecf2:4.log  
ted@ecf2:~$
```

Then this ...



```
ted@halibut: ~  
File Edit View Terminal Tabs Help  
ted@halibut:~$ ssh -L 5904:localhost:5904 ted@ecf2.osuosl.org  
Password:  
Last login: Thu Aug 2 12:37:29 2007 from c-24-21-55-189.hsdl.mn.comcast.net  
Have a lot of fun...  
ted@ecf2:~$
```

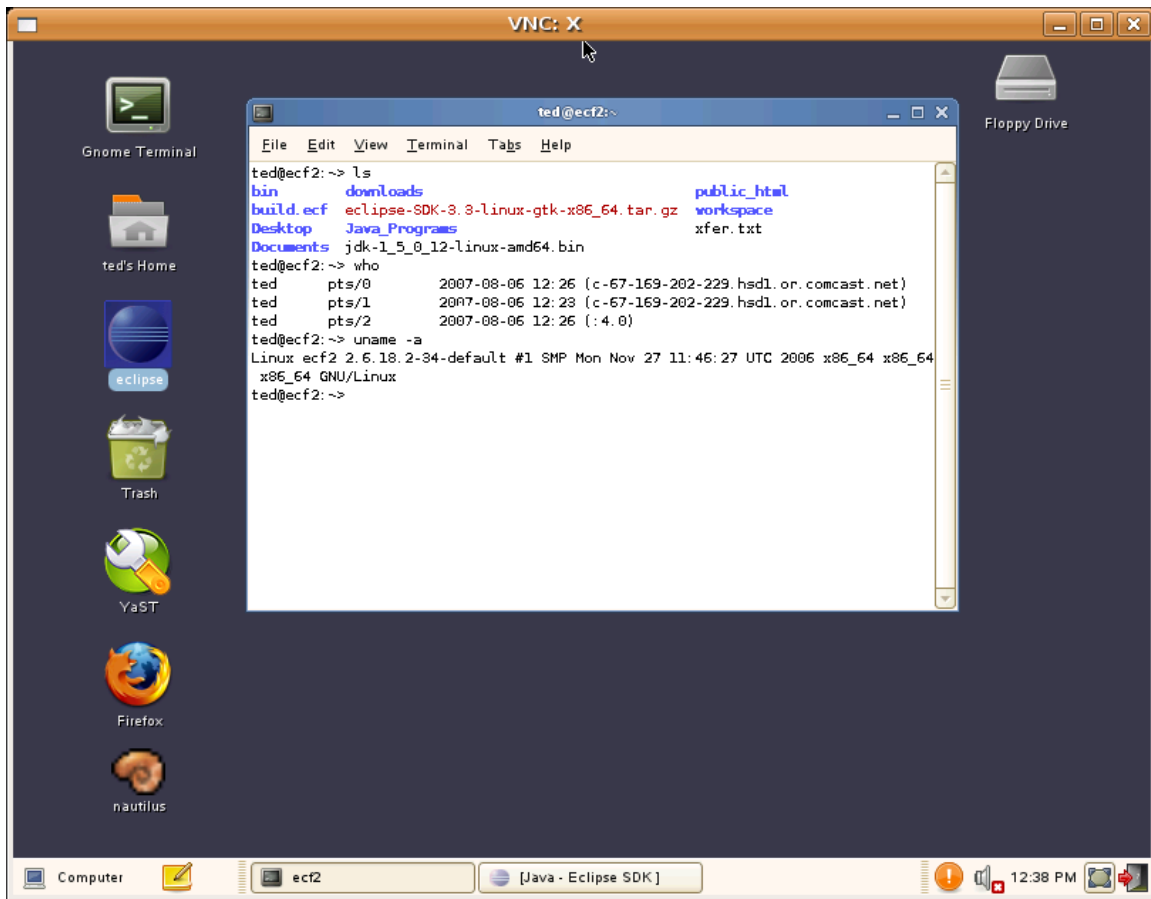
Then this ... Note that the password here is not your user password, but rather the vnc password that you set the first time you ran vncserver.



```
ted@halibut: ~  
File Edit View Terminal Tabs Help  
ted@halibut:~$ vncviewer localhost:4  
VNC viewer version 3.3.7 - built Feb 20 2006 12:04:05  
Copyright (C) 2002-2003 RealVNC Ltd.  
Copyright (C) 1994-2000 AT&T Laboratories Cambridge.  
See http://www.realvnc.com for information on VNC.  
VNC server supports protocol version 3.8 (viewer 3.3)  
Password:  
VNC authentication succeeded  
Desktop name "X"  
Connected to VNC server, using protocol version 3.3  
VNC server default format:  
 32 bits per pixel.  
Least significant byte first in each pixel.  
True colour: max red 255 green 255 blue 255, shift red 0 green 8 blue 16  
Warning: Cannot convert string "--helvetica-bold-r--*--16--*--*--*--*" to type FontStruct  
Using default colormap and visual, TrueColor, depth 16.  
Got 256 exact BGR233 colours out of 256  
Using BGR233 pixel format:  
 8 bits per pixel.  
True colour: max red 7 green 7 blue 3, shift red 0 green 3 blue 6  
Throughput 3106 kbit/s - changing from 8bit  
Using viewer's native pixel format:  
 16 bits per pixel.  
Least significant byte first in each pixel.  
True colour: max red 31 green 63 blue 31, shift red 11 green 5 blue 0
```

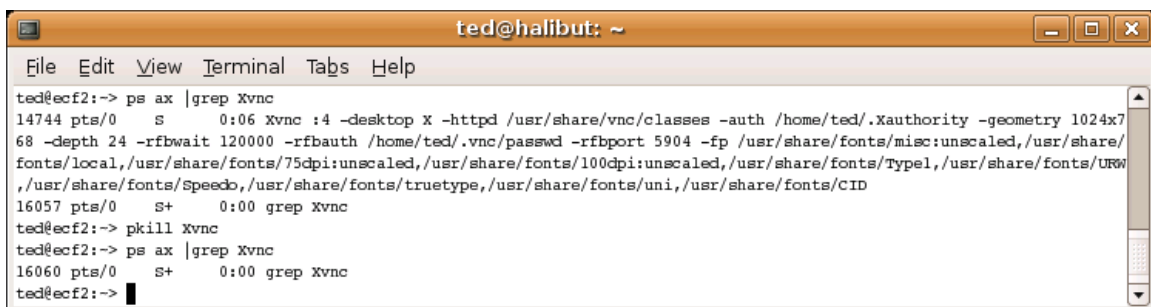
The vnc password is stored in the file passwd in the directory .vnc which is in your home. Also, the default window manager appears to be twm. I much prefer gnome, If you do also, you can copy the file xstartup from /home/ted/.vnc and put it in your .vnc directory. Also, I found that using the option -geometry 800x600 on vncserver works best for my monitor. Finally, I chose no wallpaper because I think repainting a wallpaper over a remote connection is a waste of bits.

Then, you see ...



Note that ecf2 is a 64-bit X86 machine. This means that to run Eclipse, you must choose the 64-bit Eclipse SDK (eclipse-SDK-3.3-linux-gtk-x86_64.tar.gz) and the 64-bit JDK (jdk-1_5_0_12-linux-amd64.bin). Note that ecf2 is an Intel chip, but the 64-bit JDK has amd in its name. That is OK.

Unfortunately the resulting screen is larger than my display and you got to scroll. When you logout, the icons go away but the screen remains. Just x the window. Then, from the remaining console window, kill the Xvnc process.



Then, logout from the console windows.