

# INDUSTRIAL USE OF MBE: ERICSSON EXPERIENCE

Francis Bordeleau

Product Manager Software Development

[francis.bordeleau@ericsson.com](mailto:francis.bordeleau@ericsson.com)



# OUTLINE

- ERICSSON USAGE OF MBE
- LESSONS LEARNED
- FUTURE CHALLENGES
- SUMMARY



# Ericsson Usage of MBE



# OUR PRODUCTS

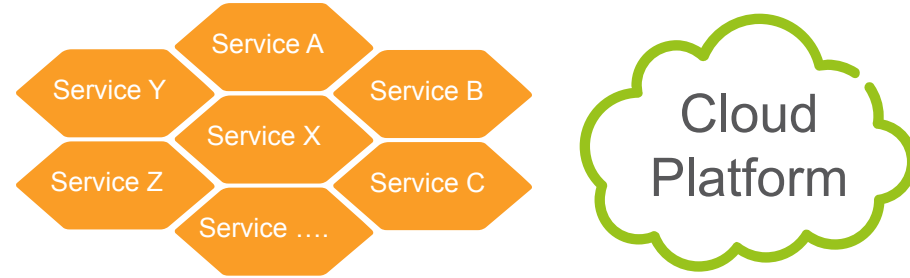
Most important component is software  
World's fifth largest software supplier

# ERICSSON SYSTEM DOMAIN



Software for system management and services

Service & Management



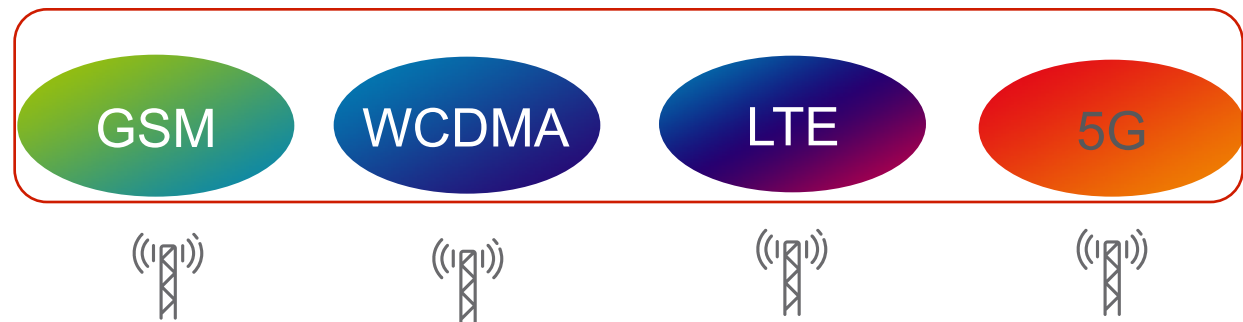
HW platforms and software for core network

Core Network



Diverse radio access platforms: HW and software

Radio Access



IPR and standards for system access

Devices





# OPERATION & MAINTENANCE (O&M)



## Modeling



## Validation



## Generation



## Benefits

- Support for multiple profiles
- Automated transformations
- Advanced validation



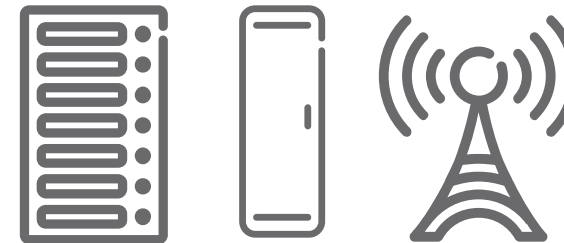
MODELING  
TOOL

WE CAN HAVE  
1000+ CLASSES  
AND 10,000+  
PROPERTIES



O&M INTERFACE

OUR DNA  
MAKES MOBILE  
COMMUNICATION  
POSSIBLE!



MANAGED ELEMENTS

# SYSTEM MODELING – MBSE



## Modelina



## Validation

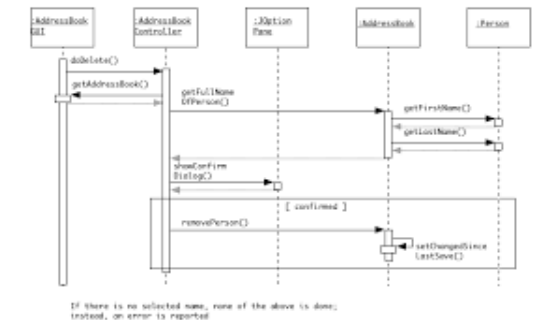
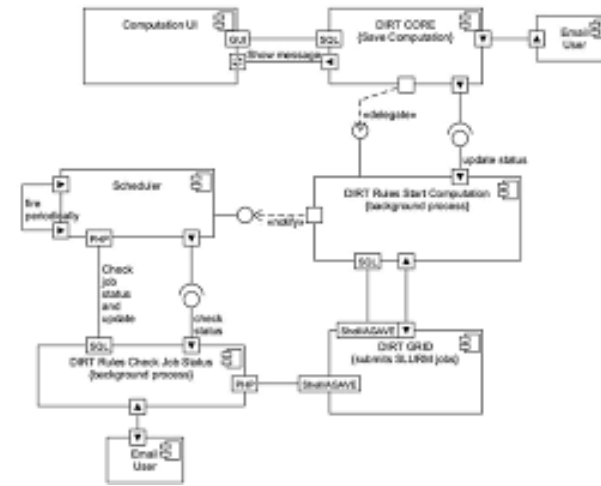
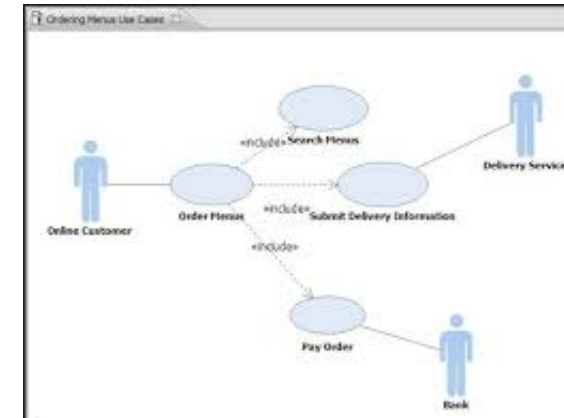
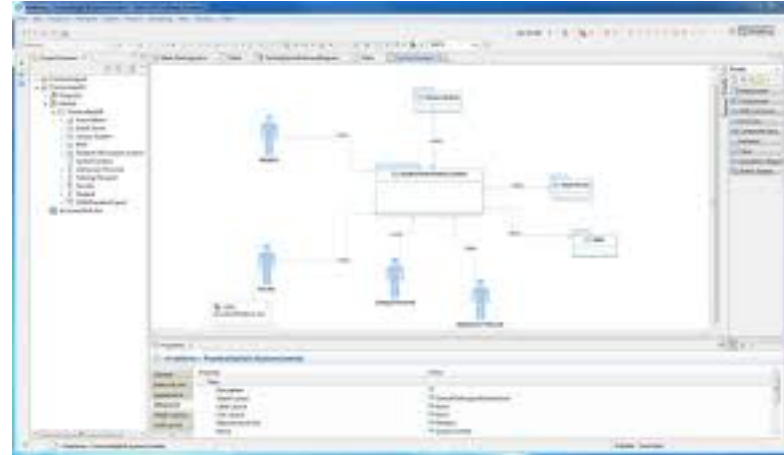


## Generation



## Benefits

- Reduce specification faults
- Move from document-driven process to “single source of information” approach



# SW DESIGN/IMPLEMENTATION USING UML-RT



Modeling



Validation



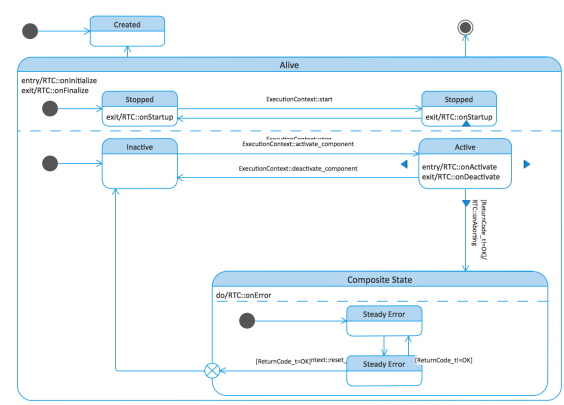
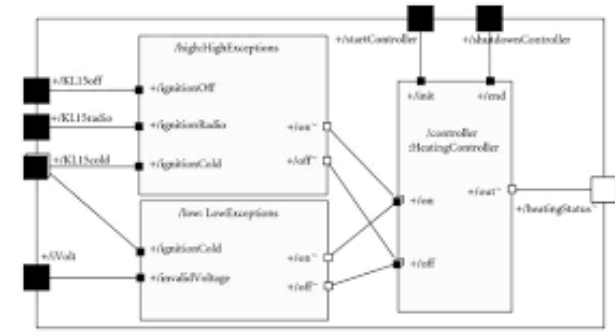
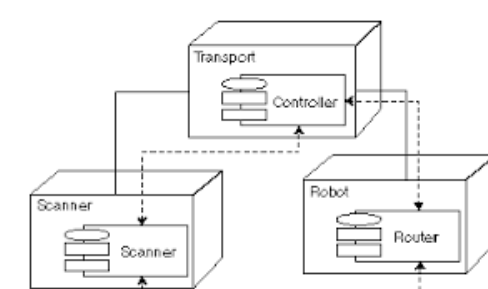
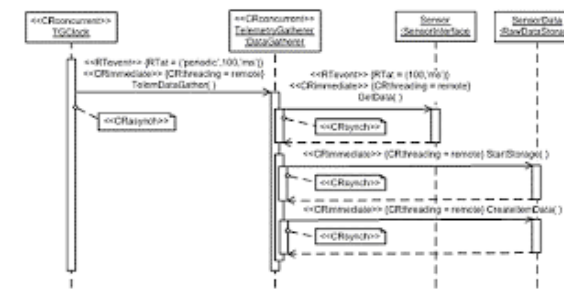
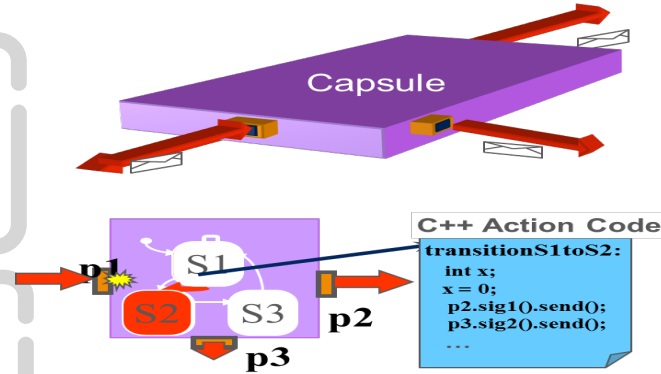
Generation

**C++**

Run-time system abstraction to hide underlying platform

Benefits

- Battle design implementation complexity using a subset of UML called UML-RT
- Capsule and hierarchical state-machine abstractions provide very powerful abstractions.





# NETWORK ARCHITECTURE (NWA)



## Modeling



With NWA proprietary DSL

## Validation

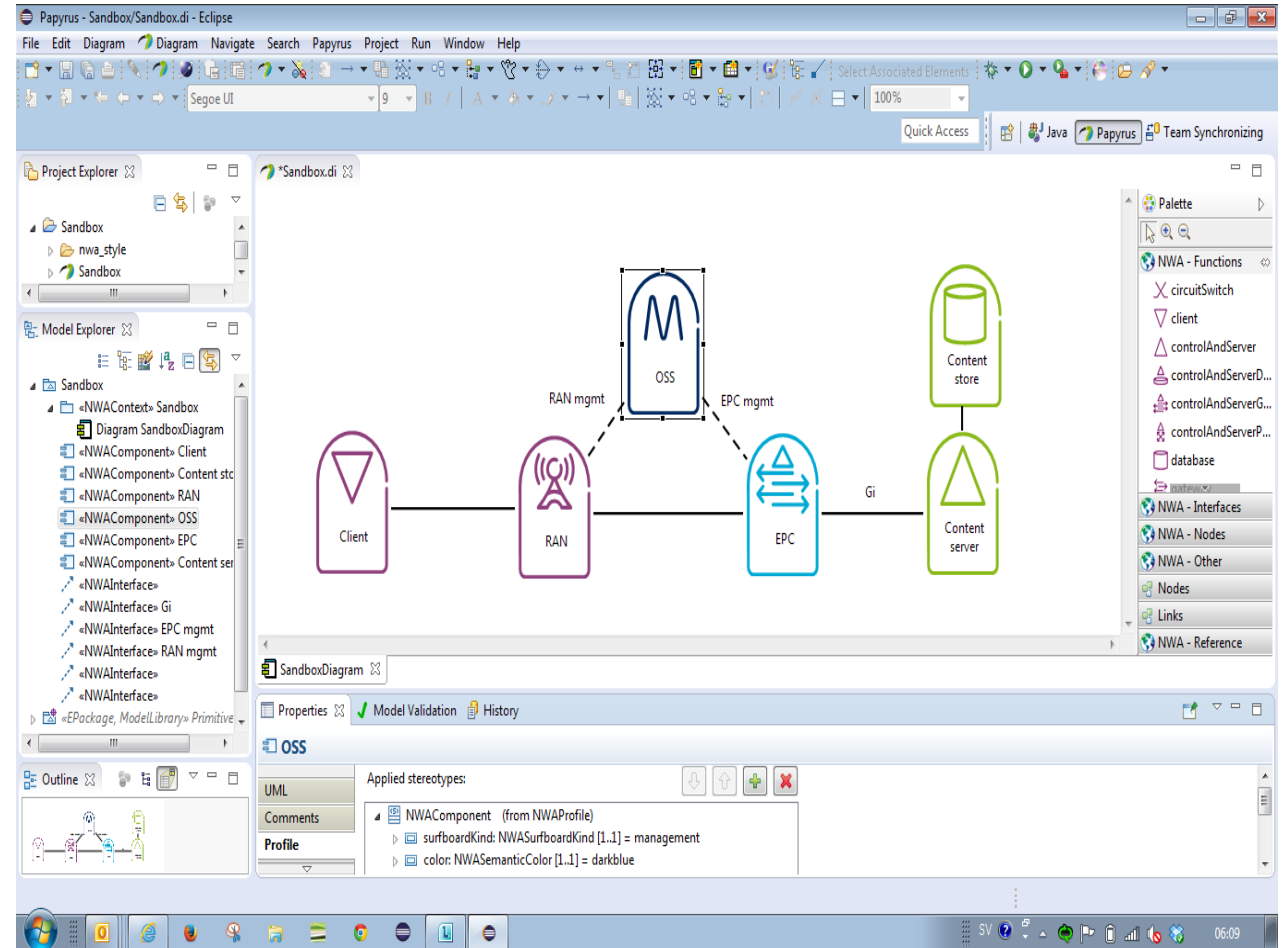
- In progress

## Generation



## Benefits

- Replace PowerPoint as main design tool
- Model versioning
- Potential development of advanced validation



# OTHER USAGES



Baseband



Enterprise Architecture/Business Process Modeling



Model-Based Testingz







# Lessons Learned

# TOOLS NEED TO BE FIT FOR THE JOB



# USER EXPERIENCE (UX)



Tool usability

Missing capabilities regarding key aspects

Support for customization and DSL

Need more and better integrations

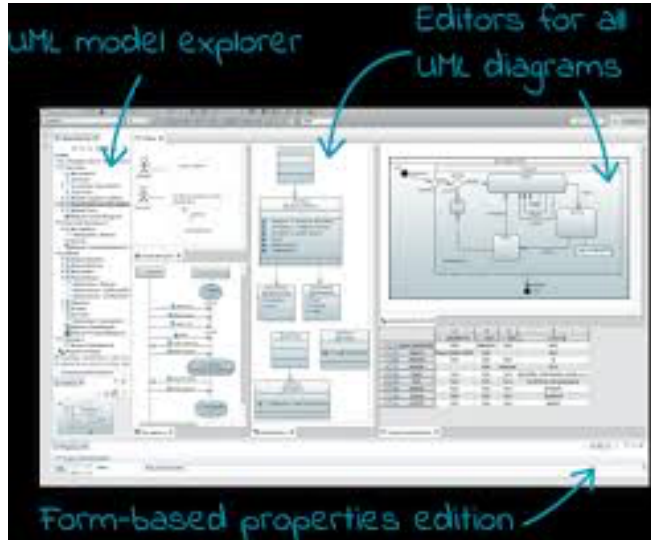




# NEED A COMMUNITY



# MBE OR AGILE? NOT AN EITHER-OR



or



# OPEN SOURCE IS NECESSARY



## › Industrial-grade open source alternative

- Open technology
- Ability to independently develop required capabilities
- Much simplified legal and business context
- Enables fruitful collaborations and tech transfer

## › Control of own destiny regarding modeling tools evolution

- Eliminate vendor lock-in
- Ensure long-term availability of key modeling tools
- No forced migration
- Ability to develop new tool features and integrations as required

## › Long-term viability of open source modeling tools

- Engage other end-user enterprises in core development of open source modeling tools around Papyrus
- Encourage the use of open source modeling tools by academia and research institutions
- Collaborate with academia and other research institutions in developing key MBE solutions

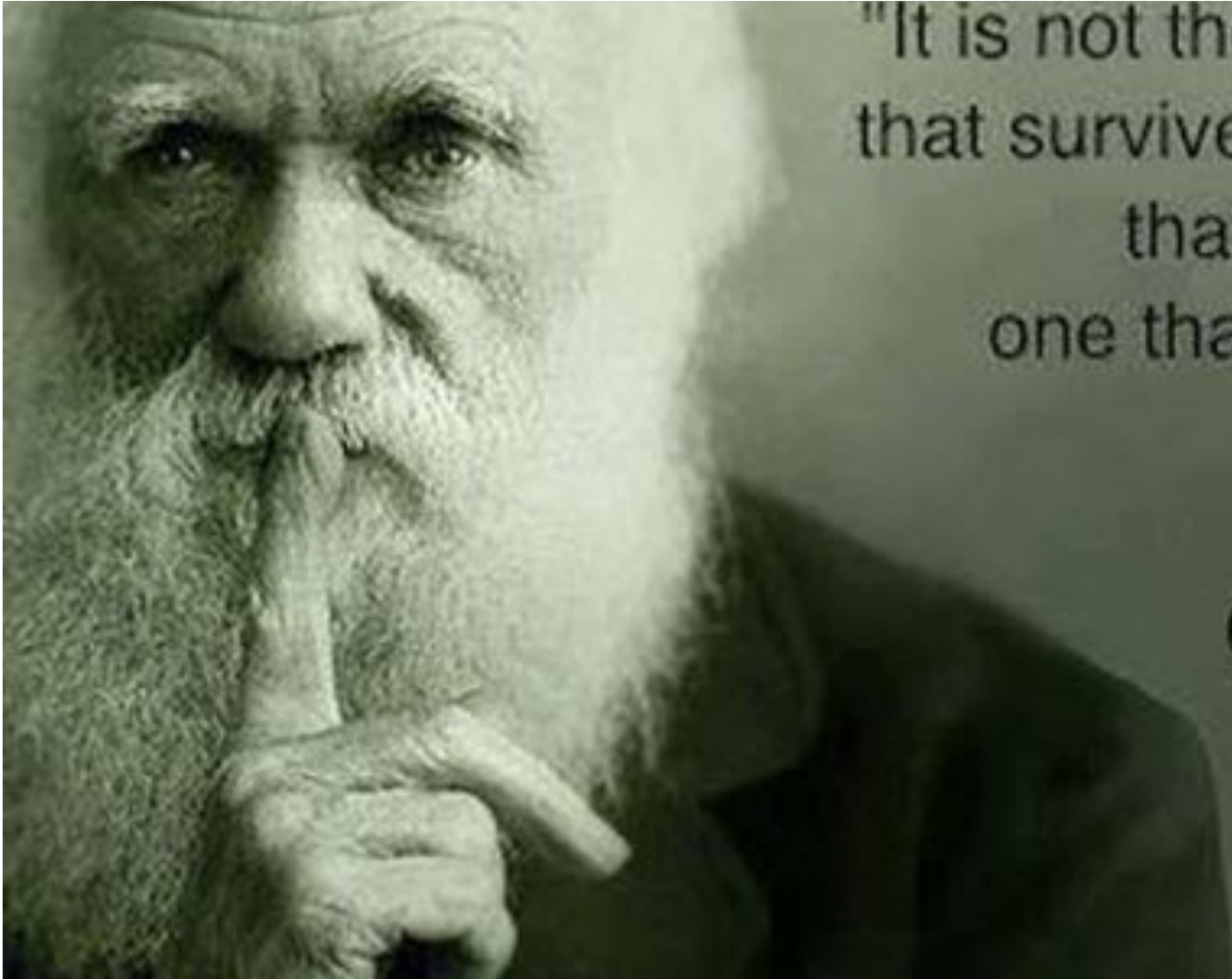




# Future Challenges



# BUSINESS AGILITY



"It is not the strongest of the species that survives, nor the most intelligent that survives. It is the one that is most adaptable to change".

Charles Darwin



# MBE IS KEY



Improved tool usability

More capabilities regarding key aspects

First-class support for customization and DSL

More and better integrations



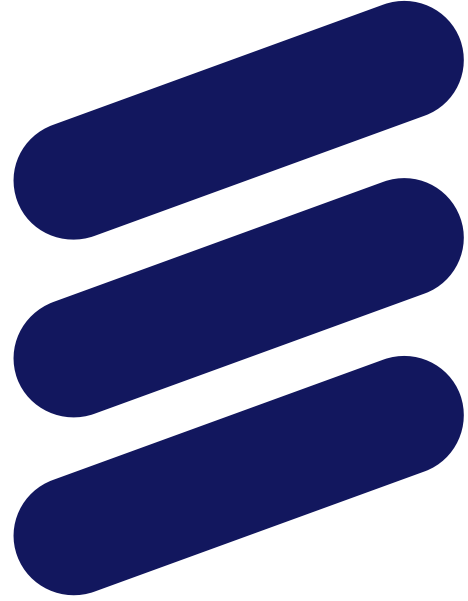
**Can't achieve the required level of business and development agility without MBE!**

# SUMMARY



- › Ericsson has been using MBE at a large scale for over 20 years
- › Lots of benefits, but current commercial proprietary tools are a main issue
- › MBE is necessary to reach the required business and development agility
- › Open source is a necessary condition to ensure future success

**We need an open source MBE solution  
to get the tool evolution we need!**



**ERICSSON**