

Module 2: Installation

- ★ Objective

- ★ To learn how to install Eclipse and PTP

- ★ Contents

- ★ System Prerequisites
 - ★ Eclipse Download and Installation
 - ★ PTP Installation from an Update Site
 - ★ Installation Confirmation

About the Tutorial Installation

- ★ The PTP Tutorial will assume you already have Eclipse installed on your laptop. Please use these slides to install Eclipse and PTP on your laptop before attending.
- ★ Note: up-to-date info on installing PTP and its pre-reqs is available from the release notes:
 - ★ http://wiki.eclipse.org/PTP/release_notes/5.0
 - ★ This information may supersede these slides
- ★ Questions? Please ask on the ptp-users mailing list:
<http://dev.eclipse.org/mhonarc/lists/ptp-user/>

System Prerequisites

- ★ Local system (running Eclipse)
 - ★ Linux (just about any version)
 - ★ MacOSX (10.5 Leopard or 10.6 Snow Leopard)
 - ★ Windows (XP on)
- ★ Java: Eclipse requires Sun or IBM Java
 - ★ Only need Java runtime environment (JRE)
 - ★ Java 1.5 or higher
 - ★ Java 1.5 is the same as JRE 5.0
 - ★ Note: The GNU Java Compiler (GCJ), which comes standard on Linux, will not work!
 - ★ Note 2: OpenJDK, distributed with some linux distributions, has not been tested with Eclipse.
 - ★ See <http://wiki.eclipse.org/PTP/installjava>

Eclipse Packages

- ✦ Eclipse is available in a number of different packages for different kinds of development
 - ✦ <http://eclipse.org/downloads>
 - ✦ This is Eclipse 3.7, also known as "Indigo"
- ✦ With Indigo, there is a new package directly relevant for HPC:
 - ✦ **Eclipse IDE for Parallel Application Developers**
 - ✦ Base Eclipse distribution plus
 - ✦ C/C++ Dev Tools (CDT)
 - ✦ Parallel Tools Platform (PTP)
 - ✦ Fortran Dev Tools (Photran)
 - ✦ Linux Tools
 - ✦ ...
 - ✦ Recommended
 - ✦ Can also augment existing Eclipse (eg, Eclipse CDT) with relevant Parallel Tools components



Eclipse Installation

- ✦ Download the appropriate package
- ✦ If your machine is Linux or Mac OS X, untar the file
 - ✦ On Mac OS X you can just double-click in the Finder
- ✦ If your machine is Windows, unzip the file
- ✦ This creates an **eclipse** folder containing the executable as well as other support files and folders



Starting Eclipse

★ Linux

- ★ From a terminal window, enter
" <eclipse_installation_path>/eclipse/eclipse &"

★ Mac OS X

- ★ From finder, open the **eclipse** folder where you installed
- ★ Double-click on the **Eclipse** application
- ★ Or from a terminal window

★ Windows

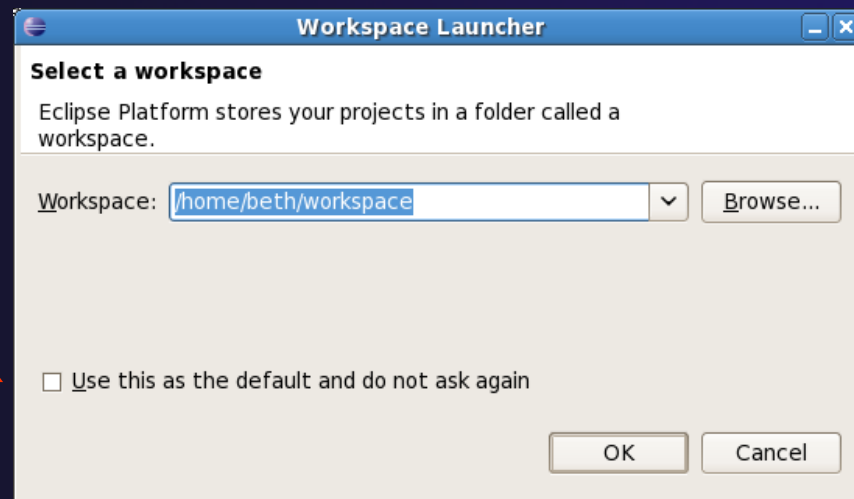
- ★ Open the **eclipse** folder
- ★ Double-click on the **eclipse** executable



Specifying A Workspace

- ✦ Eclipse prompts for a workspace location at startup time
- ✦ The workspace contains all user-defined data
 - ✦ Projects and resources such as folders and files

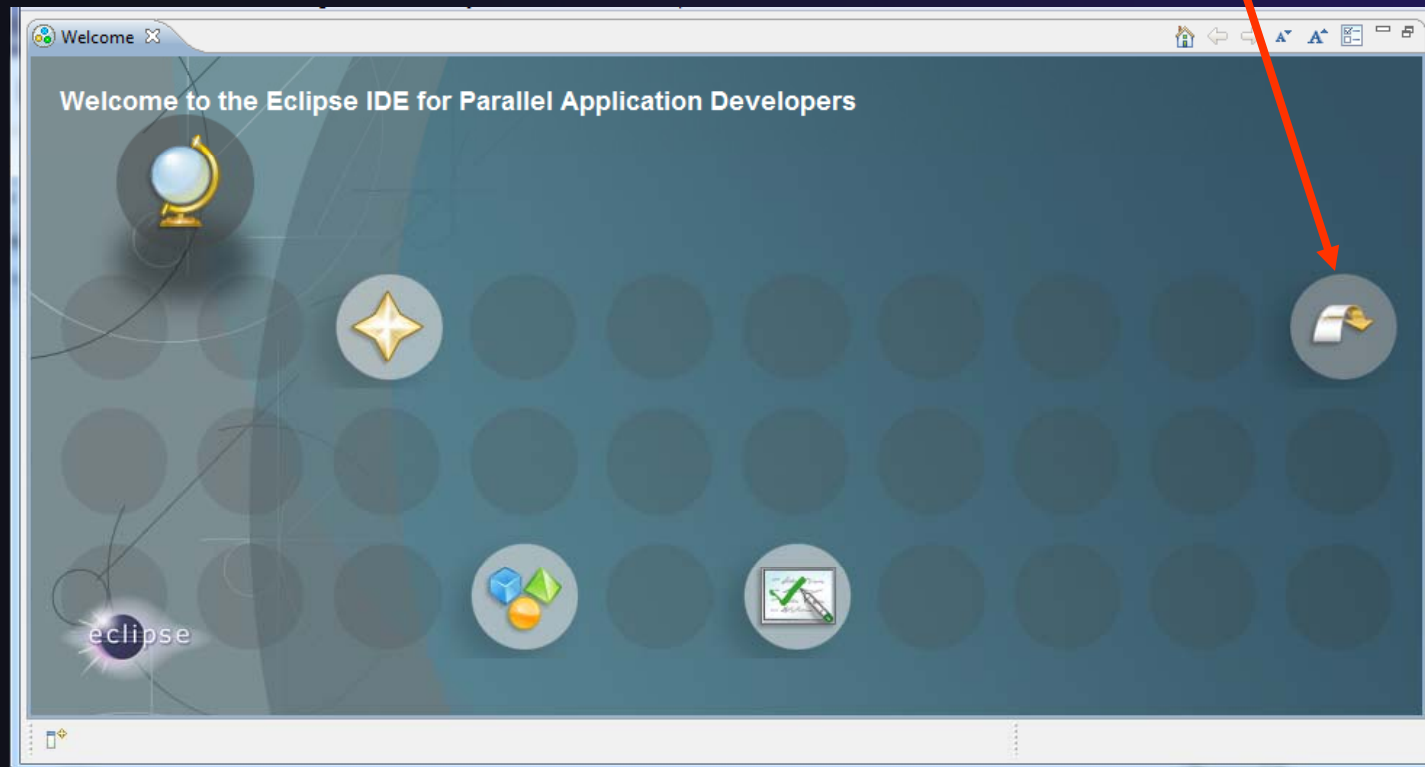
The prompt can be turned off



Eclipse Welcome Page



- ★ Displayed when Eclipse is run for the first time
- Select "Go to the workbench"



Eclipse
Parallel
App

Confirm PTP Installation

- ★ If you pre-installed Eclipse for Parallel Application Developers
 - ★ This will check that it is installed correctly
 - ★ Skip to "Check Installation Details", slide 2-14
- ★ If you have pre-installed Eclipse but not PTP
 - ★ Continue following these slides

PTP Installation

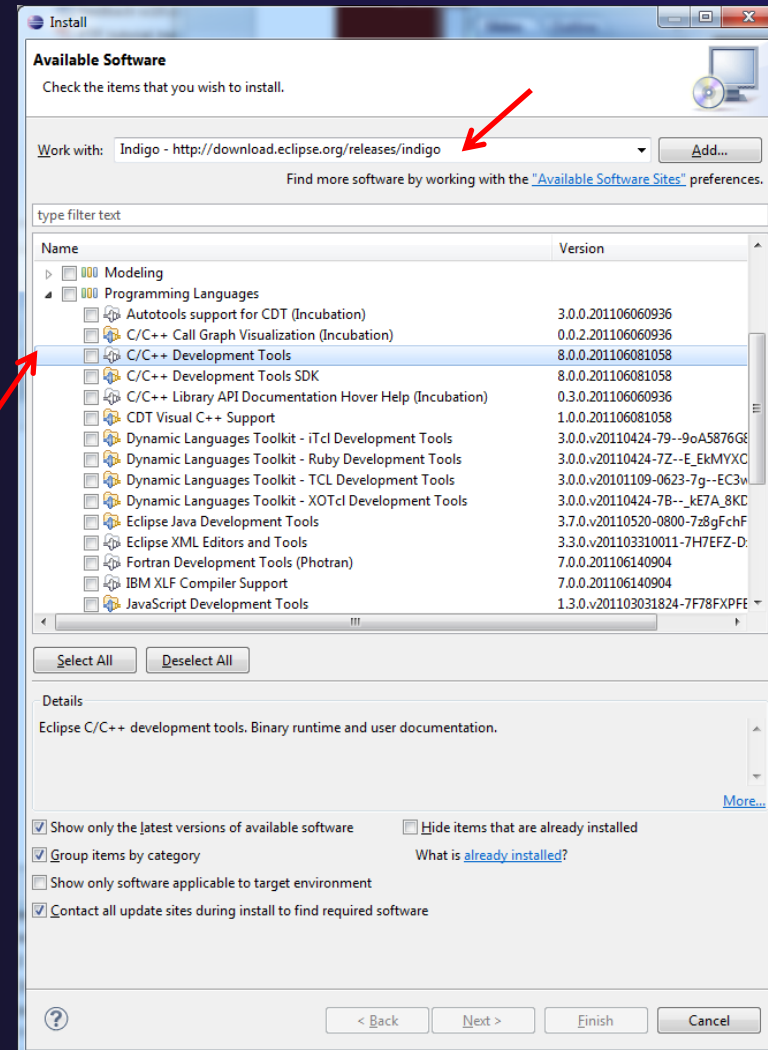
- ★ New functionality is added to Eclipse using *features*
- ★ Features are obtained and installed from
 - ★ An update site on a web server, or
 - ★ A local archive
- ★ Eclipse 3.7 comes preconfigured with a link to the **Indigo** Update Site
 - ★ This is a remote site that contains a large number of official features
 - ★ Indigo projects are guaranteed to work with Eclipse 3.7

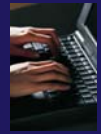


Indigo Update Site

- ★ From the **Help** menu, choose **Install New Software...**
- ★ The Indigo site comes already configured with Eclipse
- ★ We are going to install:
 - ★ C/C++ Development Tools (CDT) *
 - ★ Parallel Tools Platform (PTP) End-User Runtime
 - ★ PTP Remote Development Tools (RDT)

* If you installed the C/C++ IDE, you already have CDT in your Eclipse installation and you can omit this.

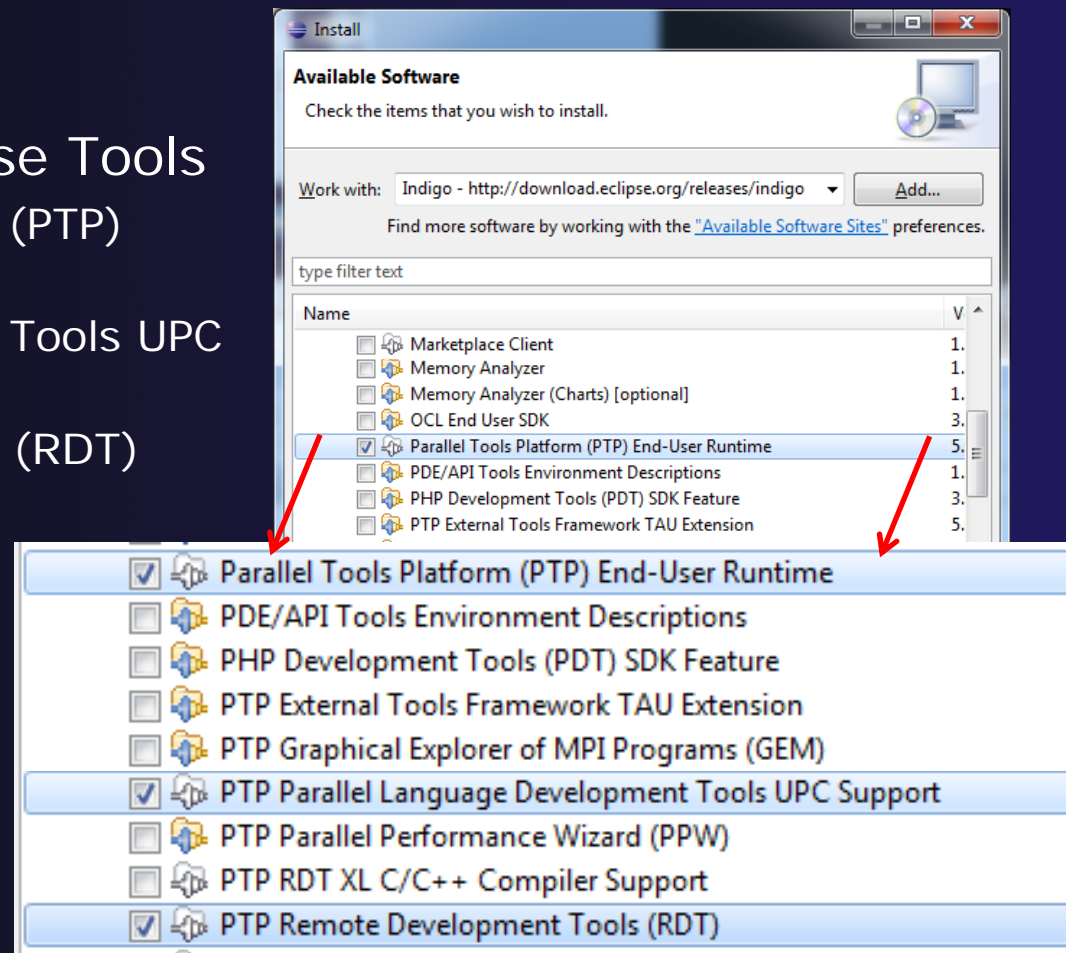




Install PTP Features

- ★ Under General Purpose Tools
 - ★ Parallel Tools Platform (PTP) End-User Runtime
 - ★ PTP Parallel Lang Dev. Tools UPC Support*
 - ★ PTP Remote Dev Tools (RDT)

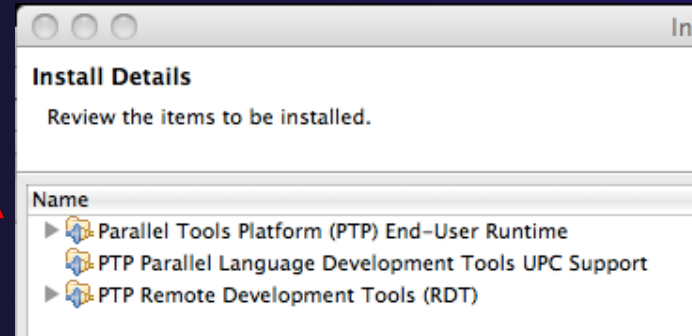
- ★ Check these and click 'Next'





Finishing Installation

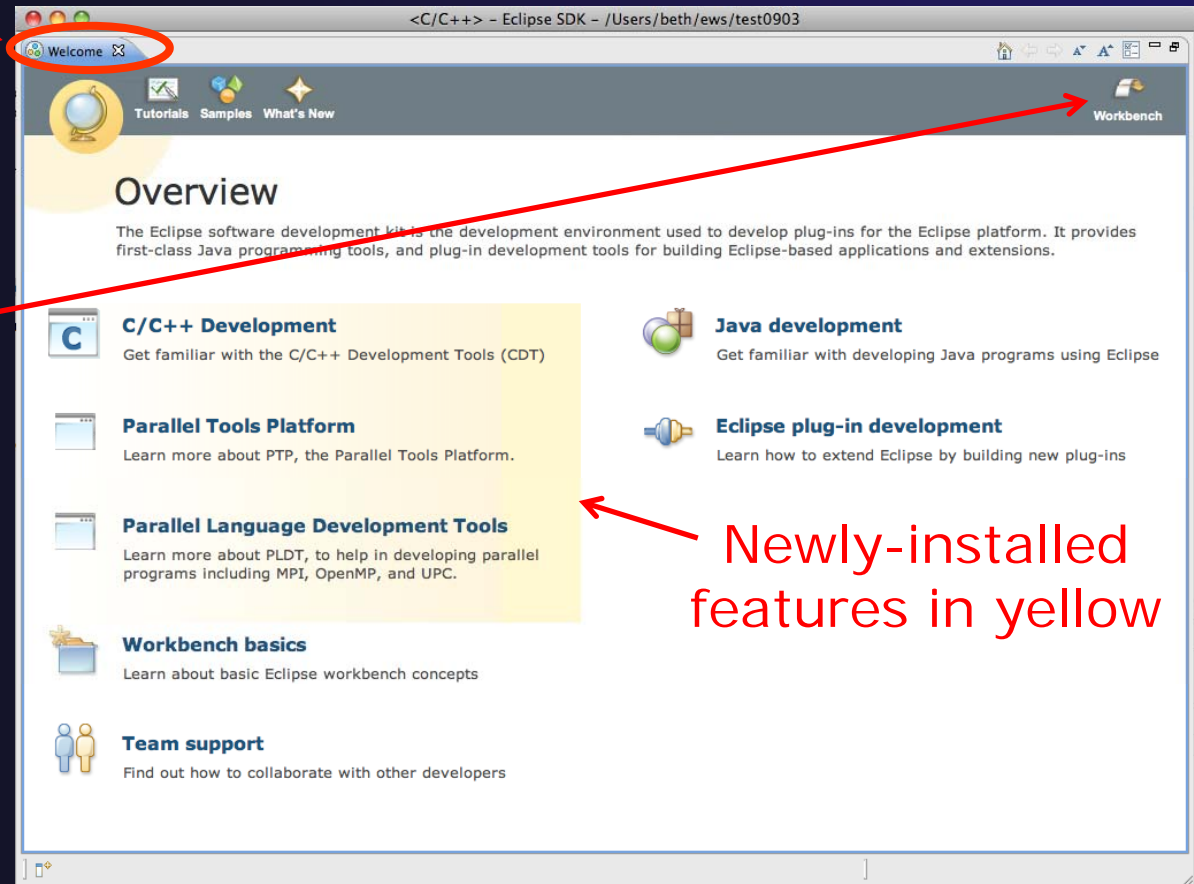
- ✦ Review the items to be installed
- ✦ Finish installing:
 - ✦ Choose **Next**>
 - ✦ Accept license terms
 - ✦ Choose **Finish**
 - ✦ Features are downloaded and installed
 - ✦ Any pre-requisites are also installed if available
- ✦ Restart Eclipse when prompted



Restart after Install



- ★ Welcome page informs you of new features installed
- ★ Click to learn more, or...
- ★ Select workbench icon to go to workbench

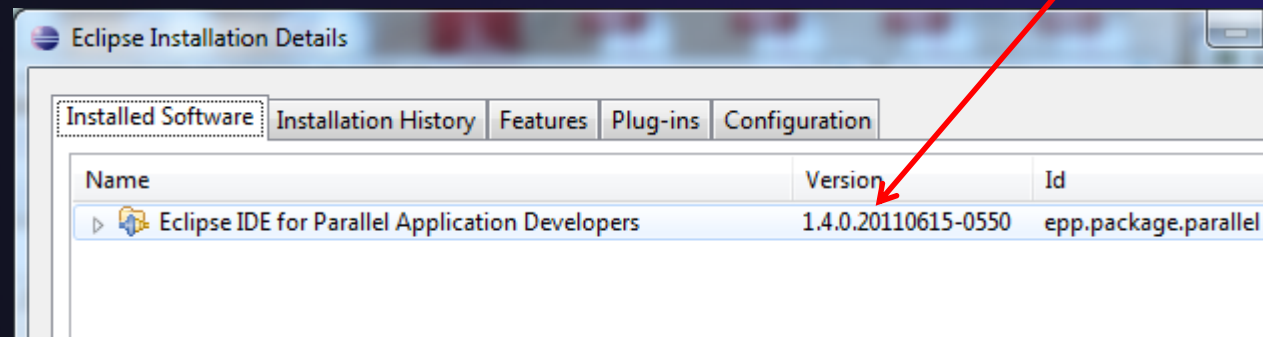




Check Installation Details

- ★ To confirm you have installed OK
 - ★ Mac: **Eclipse>About Eclipse**
 - ★ Others: **Help>About**
- ★ Choose **Installation Details**
- ★ Confirm you have the following installed software

Differs depending on base download



Checking for PTP Updates

- ★ From time-to-time there may be newer PTP releases than the Indigo release
 - ★ Indigo updates are released only in Sept and February
- ★ PTP maintains its own update site with the most recent release
 - ★ Bug fix releases can be more frequent than Indigo'
- ★ You must enable the PTP-specific update site before the updates will be found



Updating PTP

- ★ Enable PTP-specific update site
 - ★ **Help>Install new software**
 - ★ Click **Available Software Sites** link
 - ★ Enable/Check the PTP site:
 - ★ <http://download.eclipse.org/tools/ptp/updates/indigo>
 - ★ (should be enabled by default)
 - ★ Choose **OK**
 - ★ Choose **Cancel** (to return to Eclipse workbench)
- ★ Now select **Help>Check for updates**
 - ★ Follow prompts like a normal installation

