



Foundation 2.0

Mike Milinkovich
Executive Director
Eclipse Foundation
@mmilinkov

Eclipse Day Krakow
September 13, 2012



Thank You!



Eclipse Support Center
in Partnership with



Early Days



Early Days



Meritocracy



Transparency



Andrew Magill – flickr.com

Openness



Chris J. Fry – flickr.com

Early Goals



- By developers, for developers
- Collaborative development
 - processes for collaboration
 - infrastructure
- Intellectual property management
 - Aggregate the copyrights
 - Foundation as a legal buffer
- License as religion

Early Days



mozilla
FOUNDATION

Then Along Came Eclipse



Eclipse: a vibrant open source community



“Eclipse is an **open source community** focused on developing a **development platform** of **runtimes, frameworks** and **exemplary tools** that make it easy and cost-effective to build and deploy software solutions.”

Eclipse: a vibrant open source community



open source community
development platform
runtimes, frameworks **exemplary tools**

Eclipse: a sustainable eco-system



“Eclipse is a **vendor-neutral consortium** of major software vendors, solution providers, corporations, educational and research institutions and individuals working together to create a **sustainable eco-system** that enhances, promotes and cultivates the Eclipse open platform with complementary products, services and capabilities.”

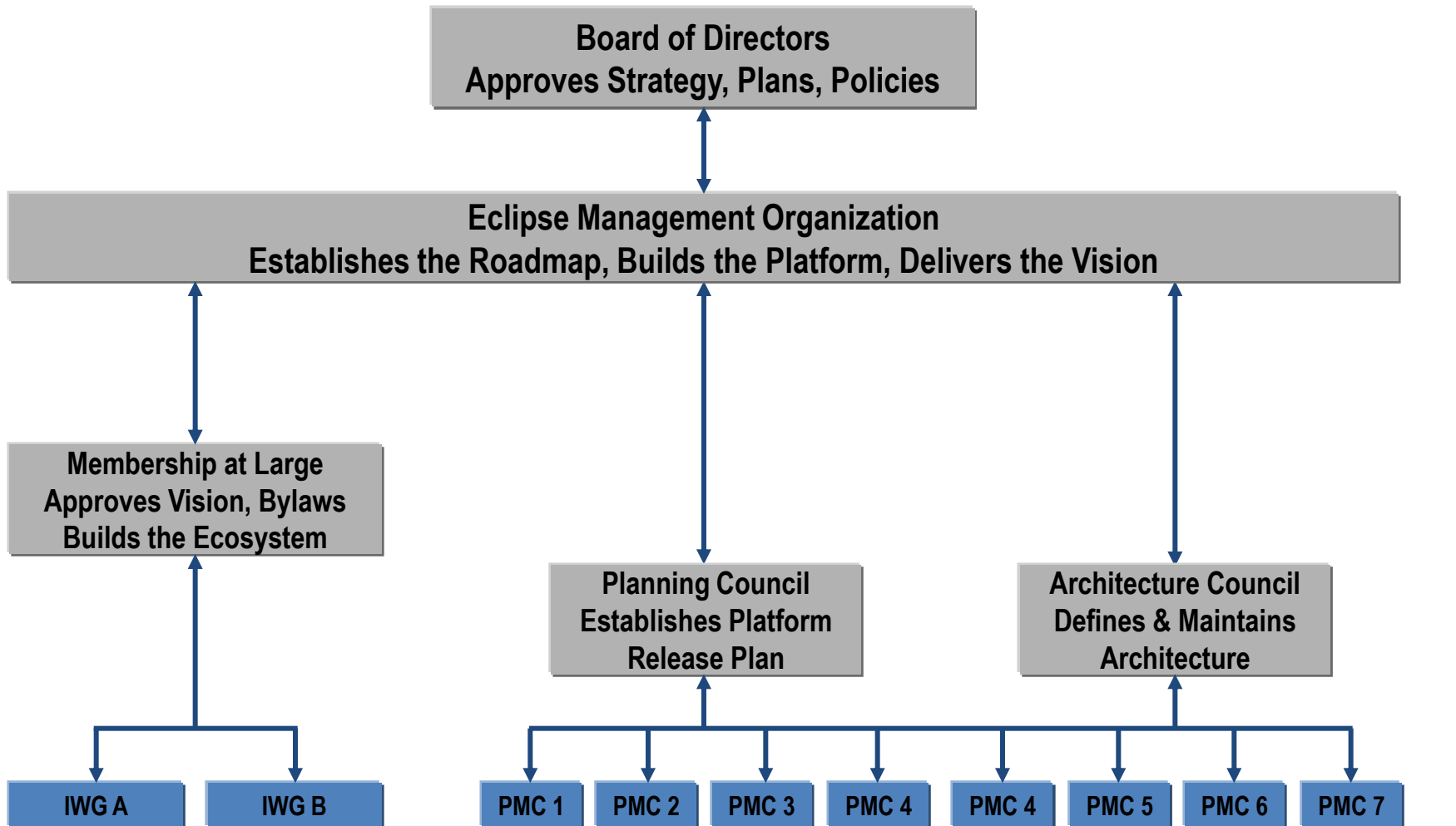
Eclipse: a sustainable eco-system



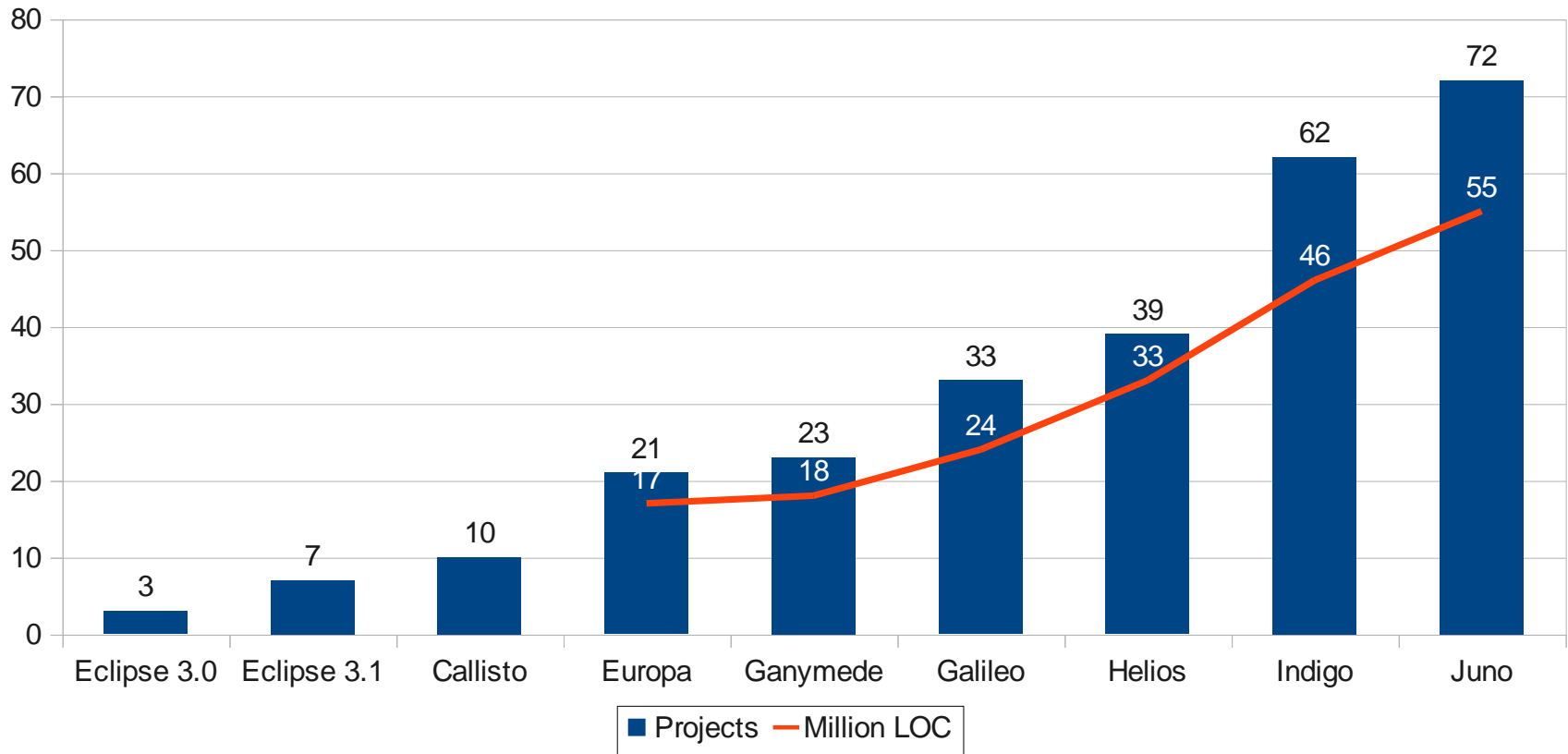
vendor-neutral consortium

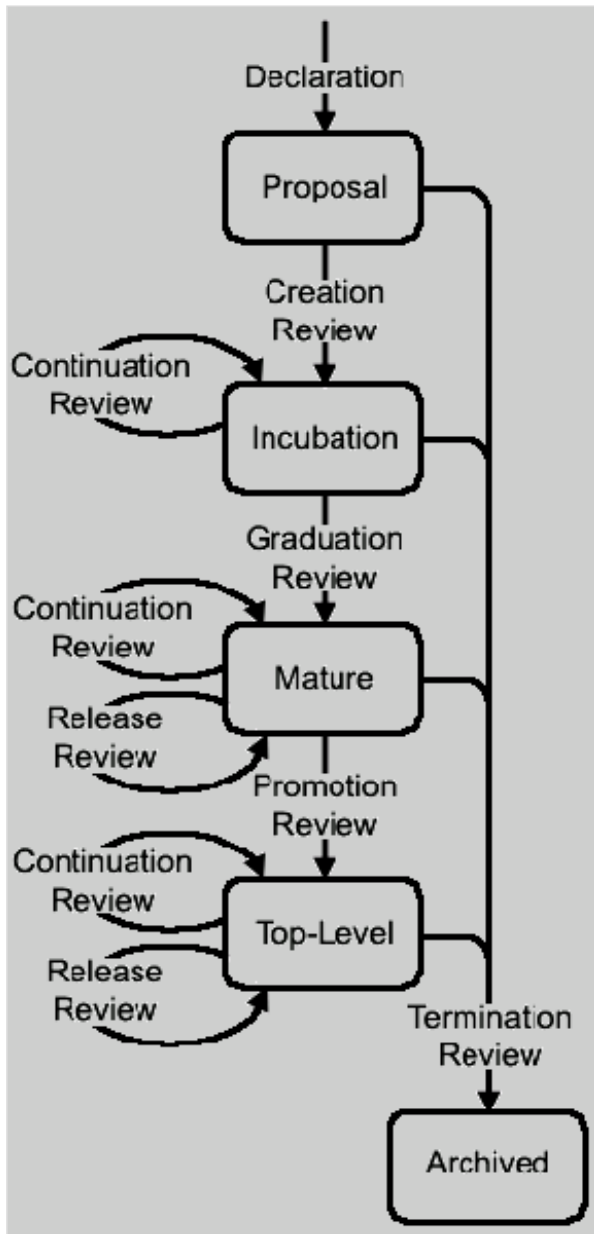
sustainable eco-system

Eclipse Governance Structure



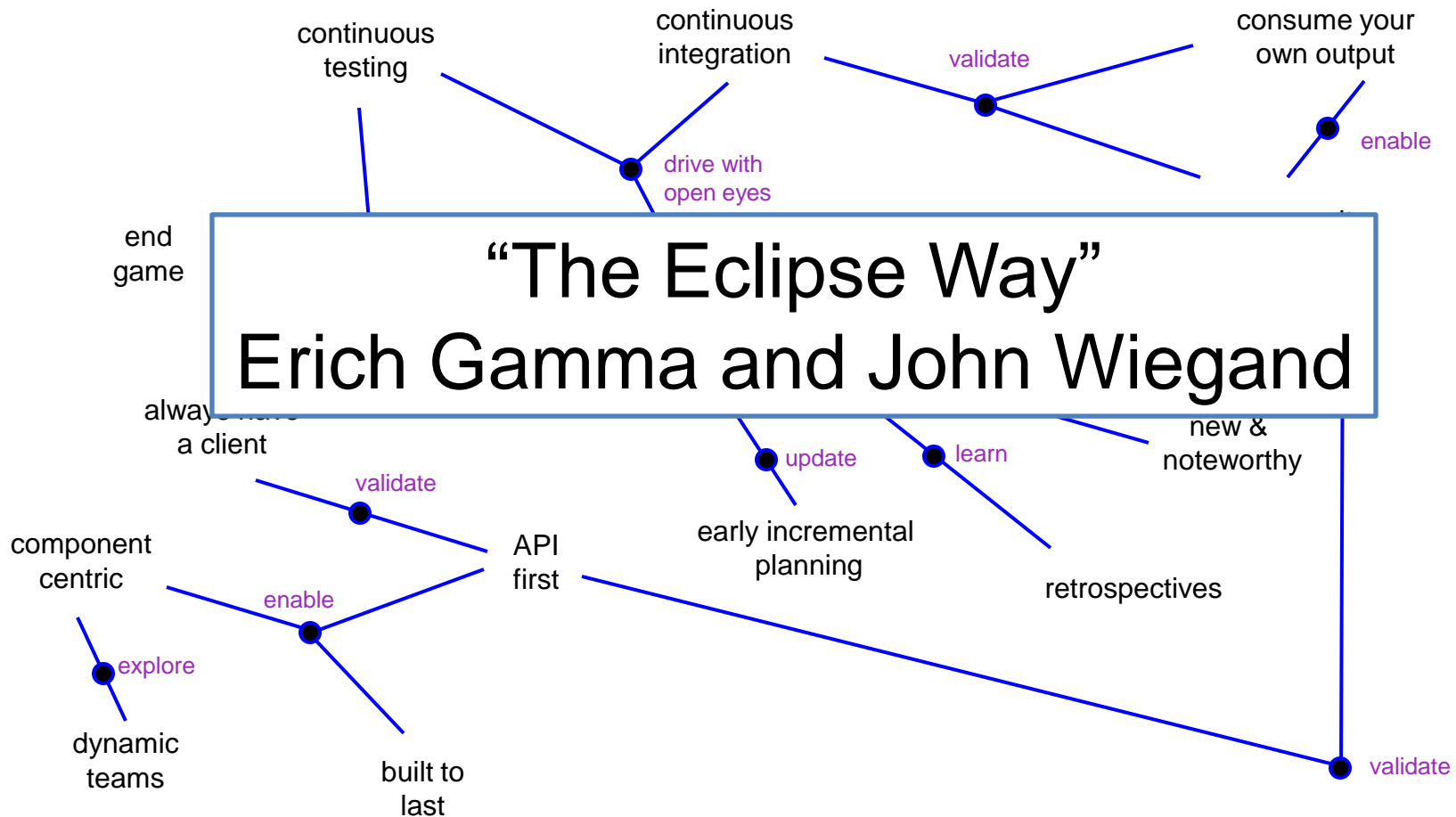
Predictability





The Project Lifecycle

How is the Development Done?



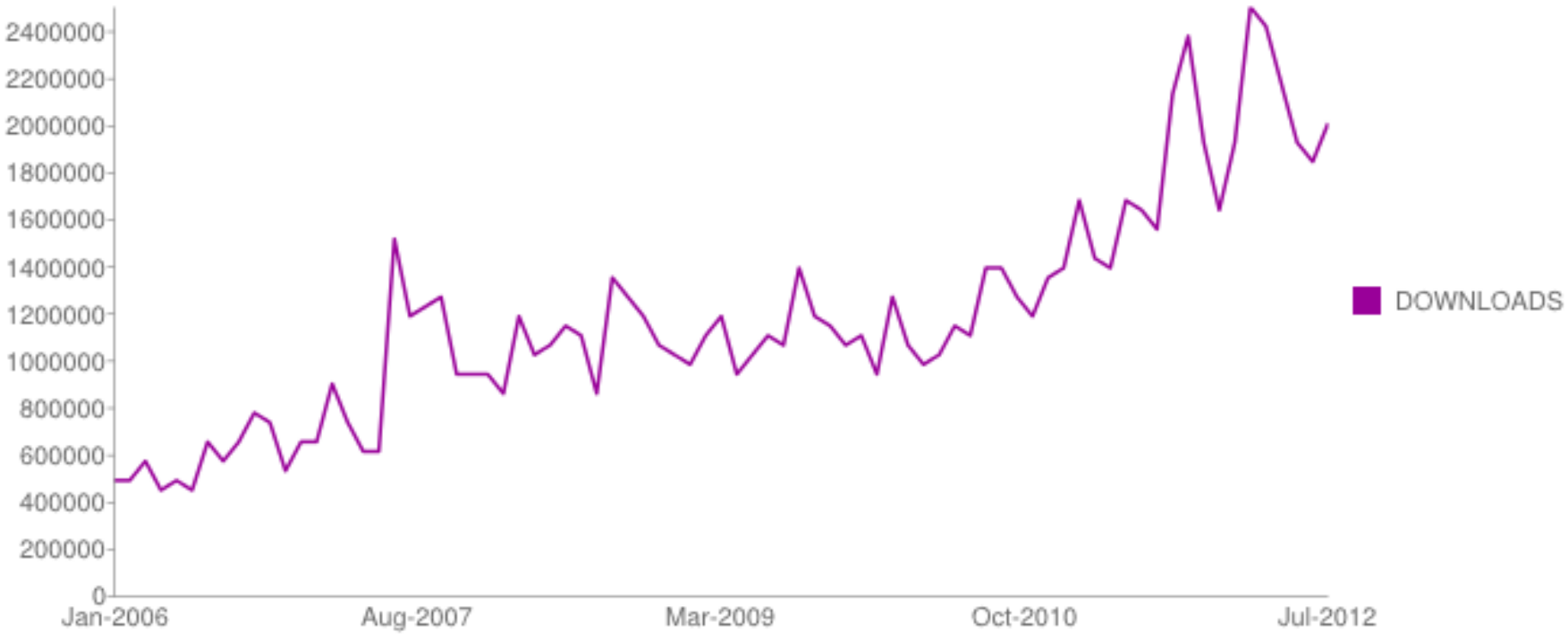
Members of Eclipse



Downloads



DOWNLOADS PAGE DOWNLOAD REQUESTS PER MONTH



Eclipse Has...

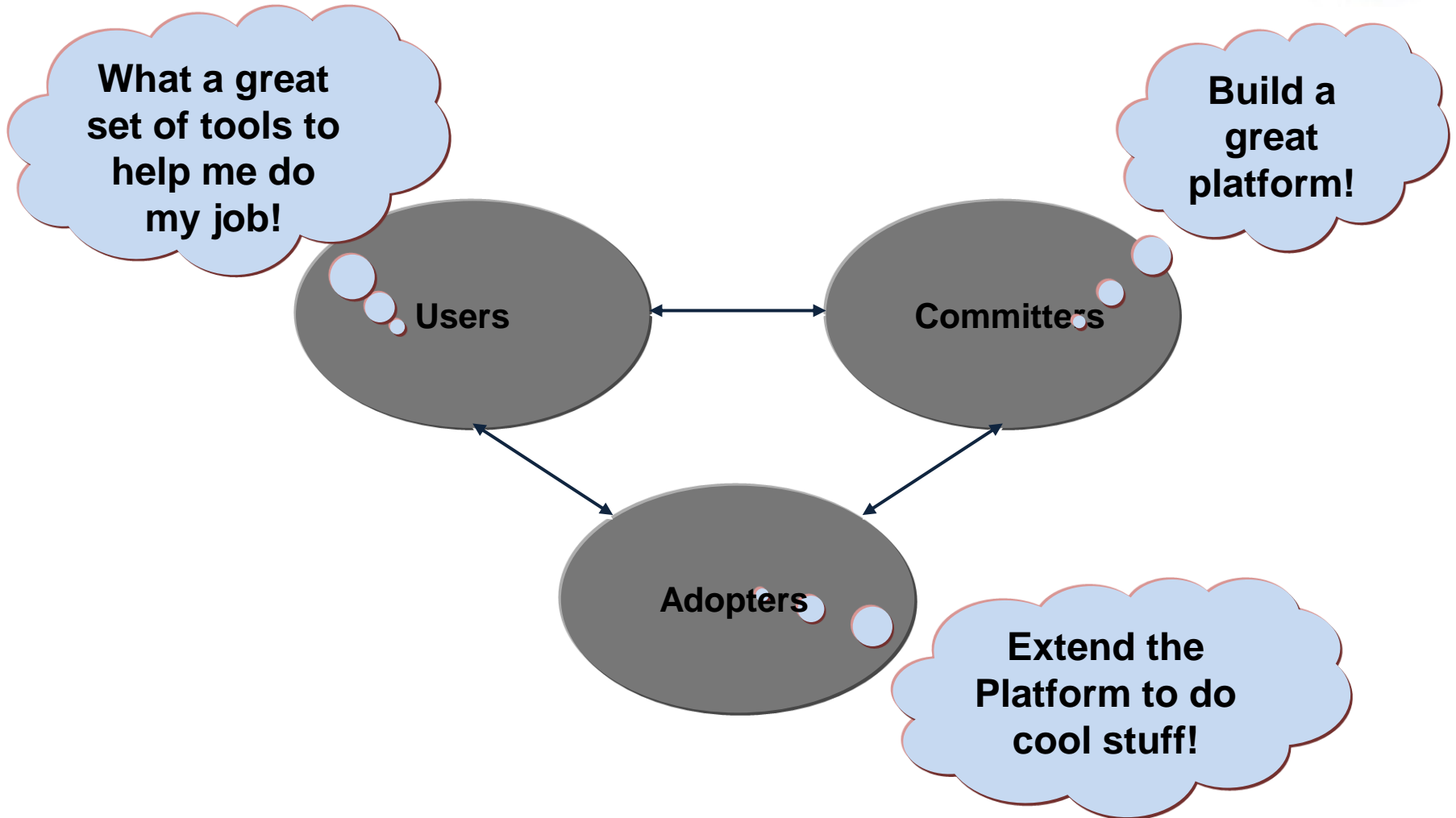


- Millions of users
- Thousands of products
- One thousand developers
- Hundreds of companies, hundreds of projects
- Predictable schedules
- World class intellectual property management
- Fifteen employees

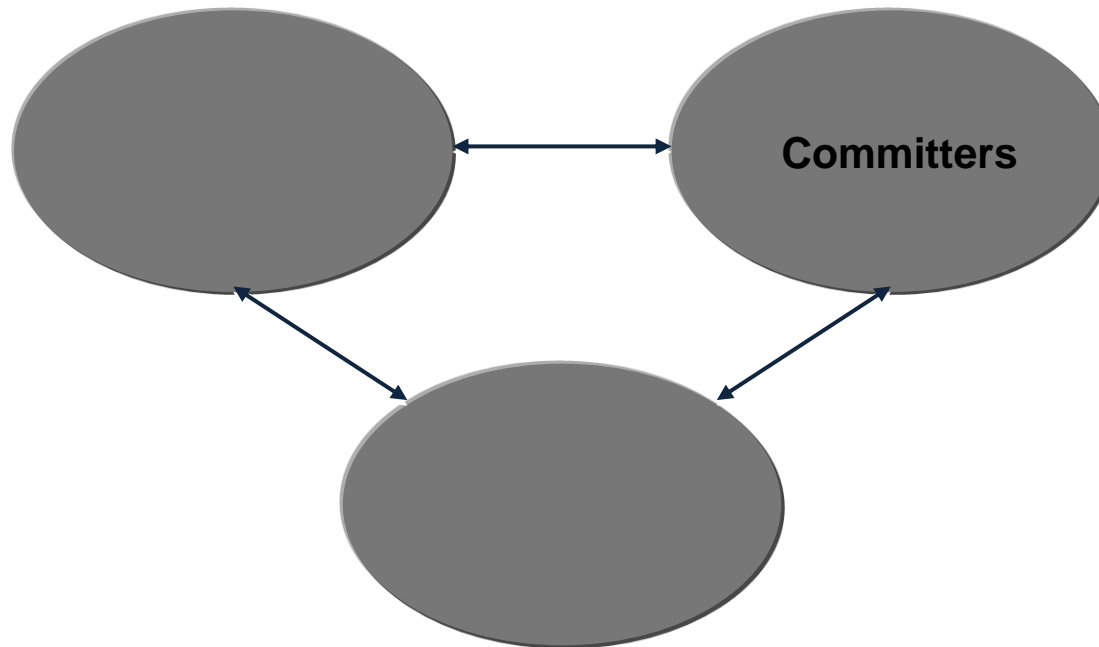


So where do we go from here?

A Community of Communities



A Community of Communities



The world is changing



github
SOCIAL CODING



mozilla
FOUNDATION

mikeal   

Apache considered harmful

Nov 22 2011



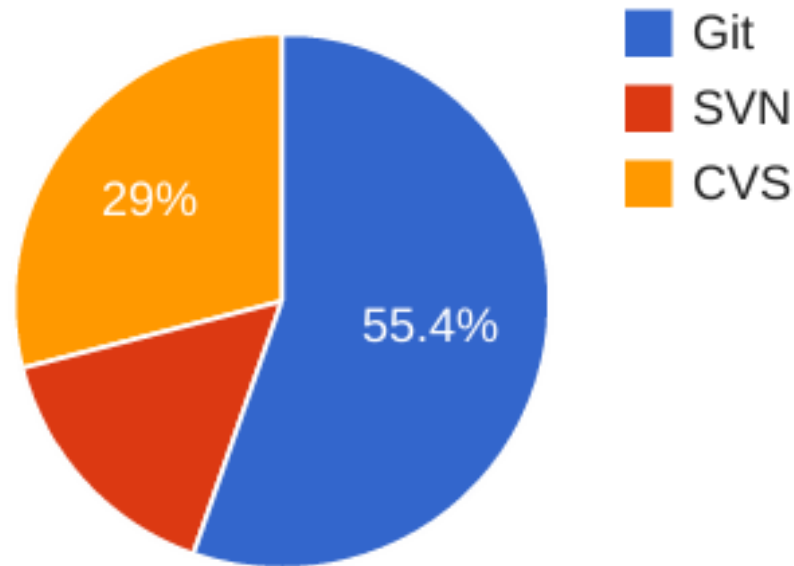
"Institutions will try to preserve the problem to which they are the solution." -- Clay Shirky



This is a hard article to write. The way I think about technology, open source, and community has been shaped by Apache and while I appreciate all they have done I no longer believe they embody the values they claim.

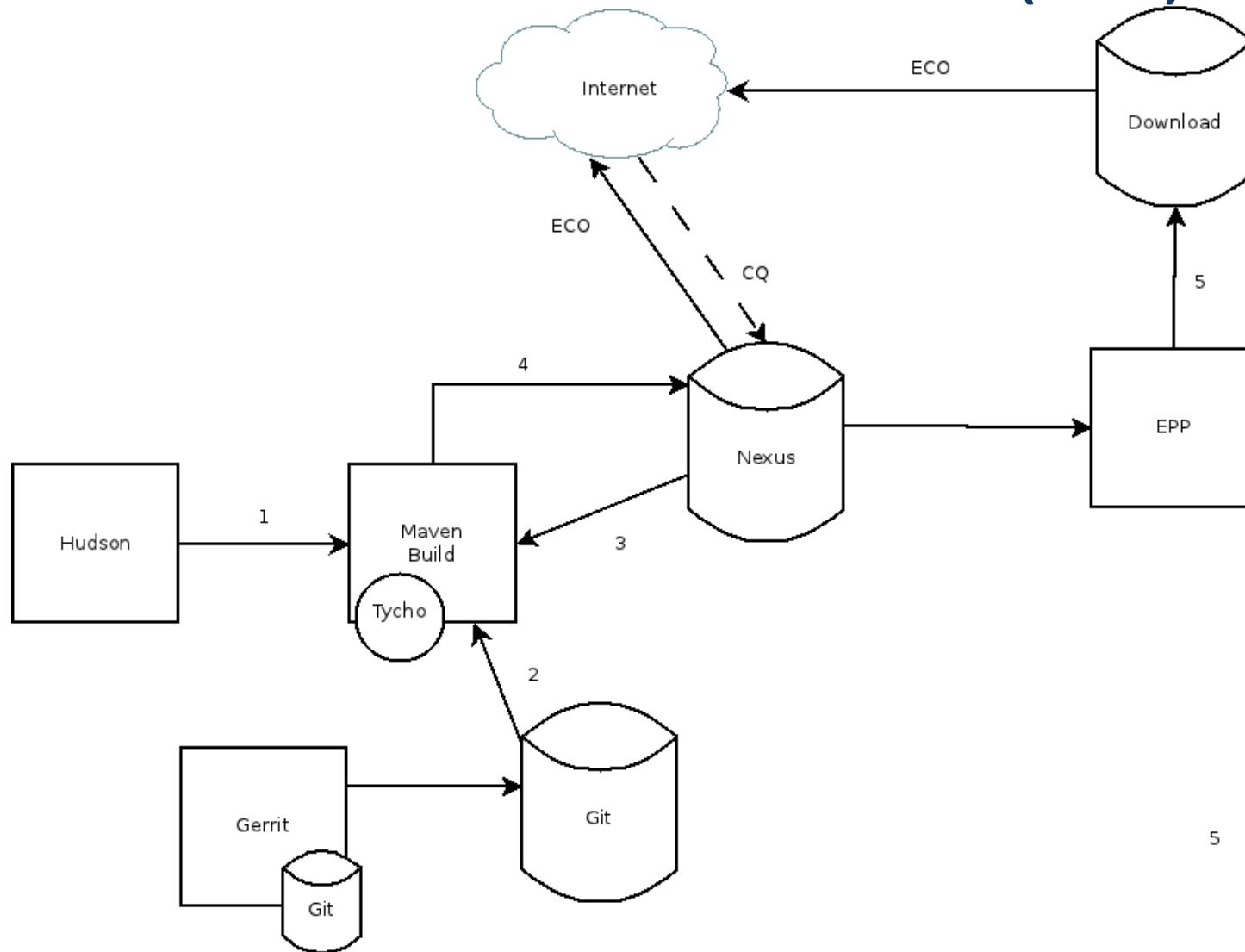
Start with the basics. Why does Apache exist?

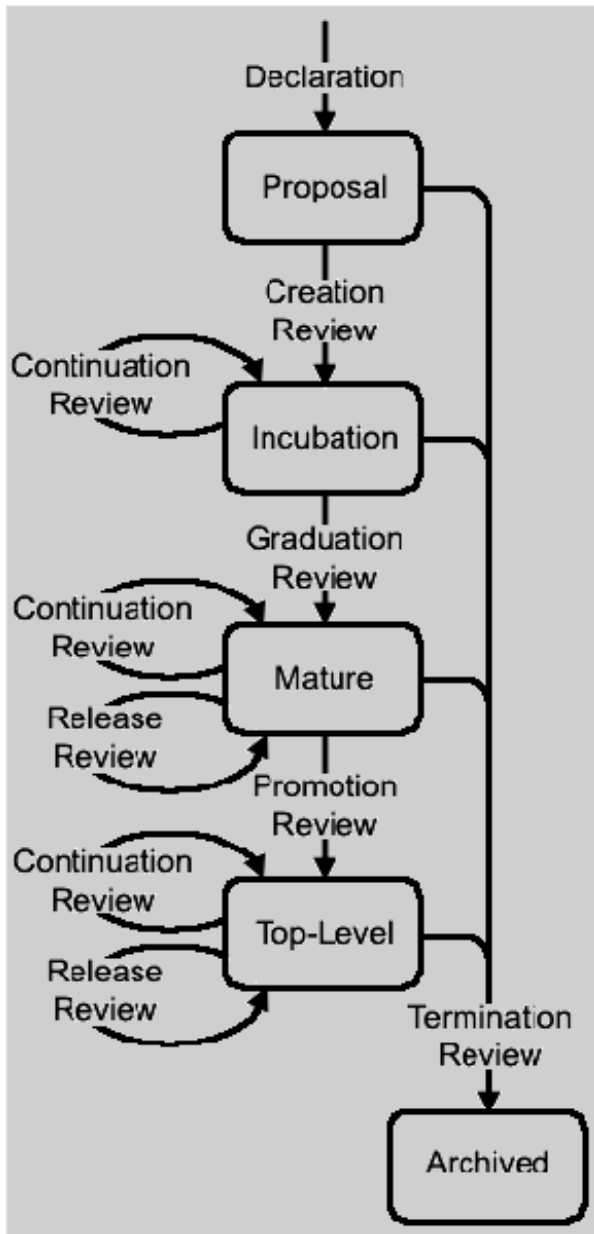
New Infrastructure



CVS @ Eclipse will be shut off 21-Dec-2012

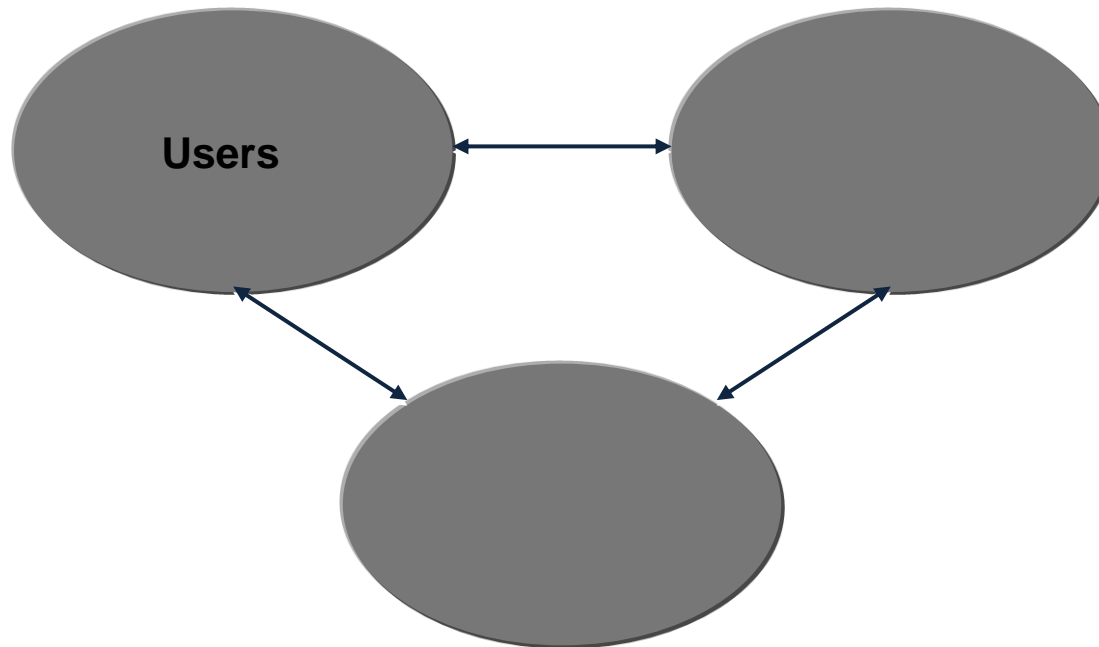
Common Build Infrastructure (CBI)





The Project Lifecycle Diet

A Community of Communities



Eclipse's Secret Sauce



- Eclipse is the industry's best model for vendor-neutral collaboration on innovation
- Industry collaboration requires:
 - Licensing model for sharing co-developed innovation
 - IP management to maximize commercialization opportunities
 - Project model for coordinating investments and activities
 - Governance model to ensure a level playing field for all participants
 - Highly modular technical architecture for the platform

Eclipse gives you these “out of the box”

These processes at Eclipse were mostly designed by IBM

90% of automotive innovations are realised by software

CAN Class B

- Signallicht und Motorenmodul (M)
- Störungs- und Meldefunktion (M) (SAWS/SPB-C)
- Signallicht und Motorenmodul (M)
- Störungs- und Meldefunktion (M) (SAWS/SPB-C)
- Stellventil links (S)
- Stellventil rechts (S)
- Temperatur zum links (T)
- Temperatur zum rechts (T)
- Temperatur Motor links (T)
- Temperatur Motor rechts (T)
- Drucktemperatur (D)
- Öltemperatur (O)
- Öltemperatur (O)
- Elektronischer Zündschlüssel (E)

- Kombiinstrument (K)
- COMAND/ Audio 10/ Audio 20/ Audio 30/ APS
- Parkbremse System (P)
- Anhängerkupplung (A)
- Multifunktionslenker/ Sonderbeleuchtung (S)
- Stromheizung
- Neomatik (NLA/ NLA → G)
- Sammler CAN-Class B WSK rechts
- Sammler CAN-Class B WSK links
- Sammler CAN-Class B Control
- Wahlgerät

CAN Class C

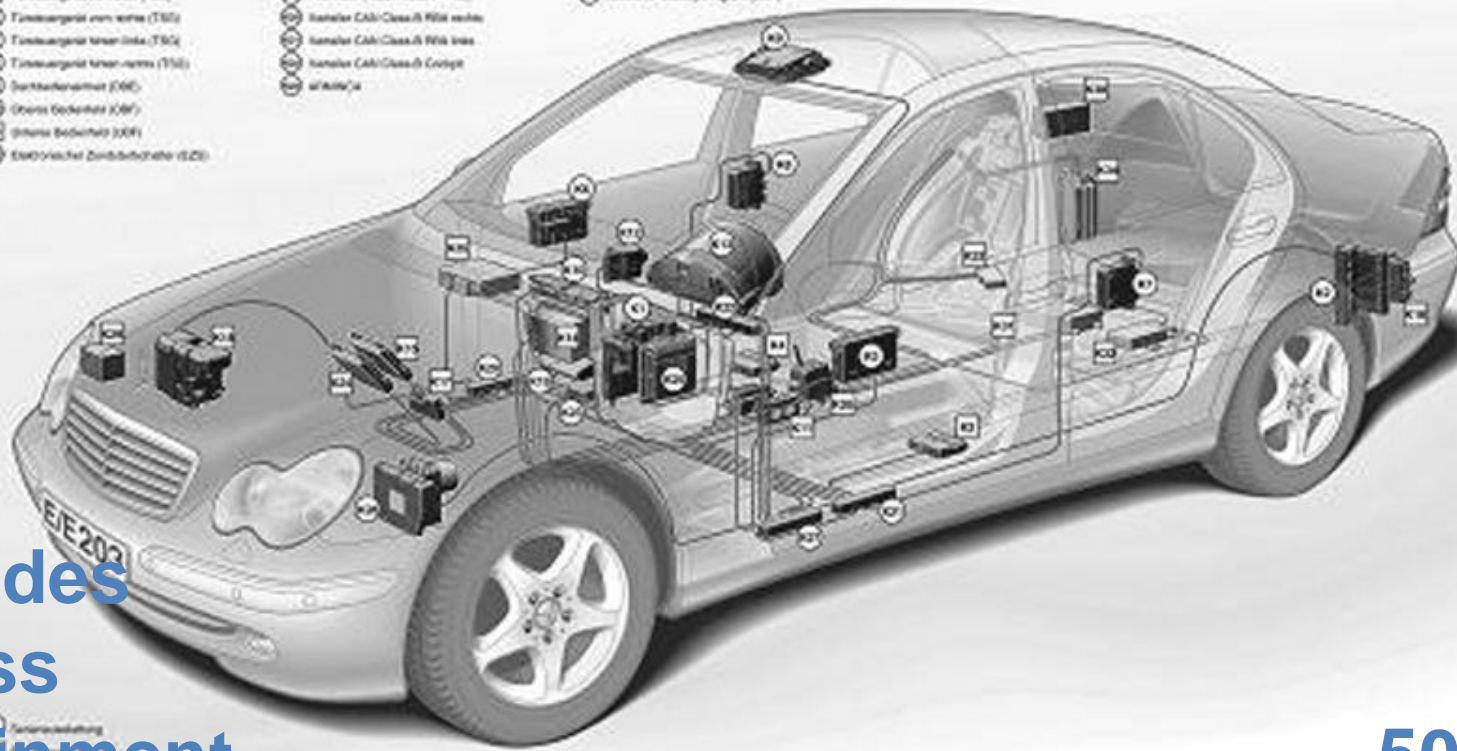
- Elektronische Zündschlüssel (E)
- Körperelement (K)
- Elektronische Getrieblenkung (E) (G) (X)
- Motorenmodul (M)
- Elektronisches Wählmodul (E)
- Variable CAN Data C FBA links
- Electronic Stability Program (ESP)

Unvernetzte SG

- ALPH
- Fx-Taste

D2B optical

- COMAND/ Audio 10/ Audio 20/ Audio 30/ APS
- Freisprecher Telefon (MMA, Nubus)
- Liqui/MC (M)
- Handy-Telefonadapter (H)
- Stromerweiterer
- CD-Recorder



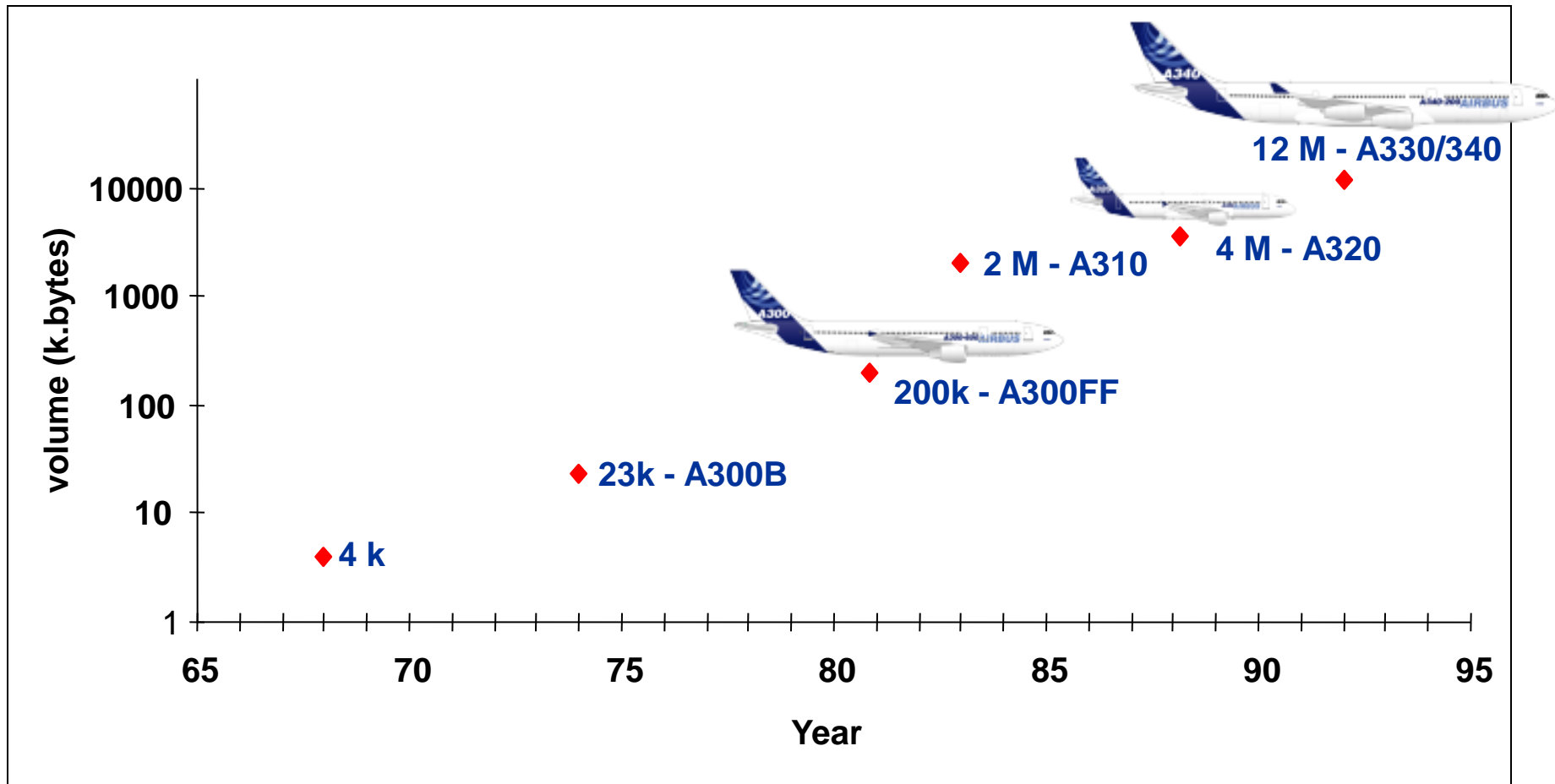
Mercedes
S-Class
Infotainment
Subsystem
20 Mio. LOC

50 – 100
networked
ECUs

The avionics software beginnings



- First significant use of software for avionics : the 80's



Eclipse Industry Working Groups



- Eclipse Industry Working Groups (IWG) allow organizations to collaborate and innovate on the creation of technology, specifications and best practices for a specific industry or market.
- Eclipse Industry WG provide:
 - The legal agreements to share intellectual property rights.
 - The ability to pool resources to create new technology and standards.
 - IT infrastructure to facilitate collaboration between a distributed team.
 - A governance model and process to ensure a level playing field
 - A technology platform



M2M Groups Work to Further Standards

11/4/2011

Partnerships are a vital part of the M2M community, and new groups are being formed that contribute to the overall body of knowledge, especially when it comes to open standards.

Recently, Sierra Wireless, www.sierrawireless.com, and the Eclipse Foundation, www.eclipse.org, announced the creation of an M2M Industry Working Group. The group is designed to define and implement an open-standard platform for the software development tools used in developing M2M communications applications.

Other founding members of the group are IBM, www.ibm.com, and Eurotech, www.eurotech.com. The group is open to any organization with an interest in M2M solutions.



AIRBUS
AN EADS COMPANY

ERICSSON 

THALES 

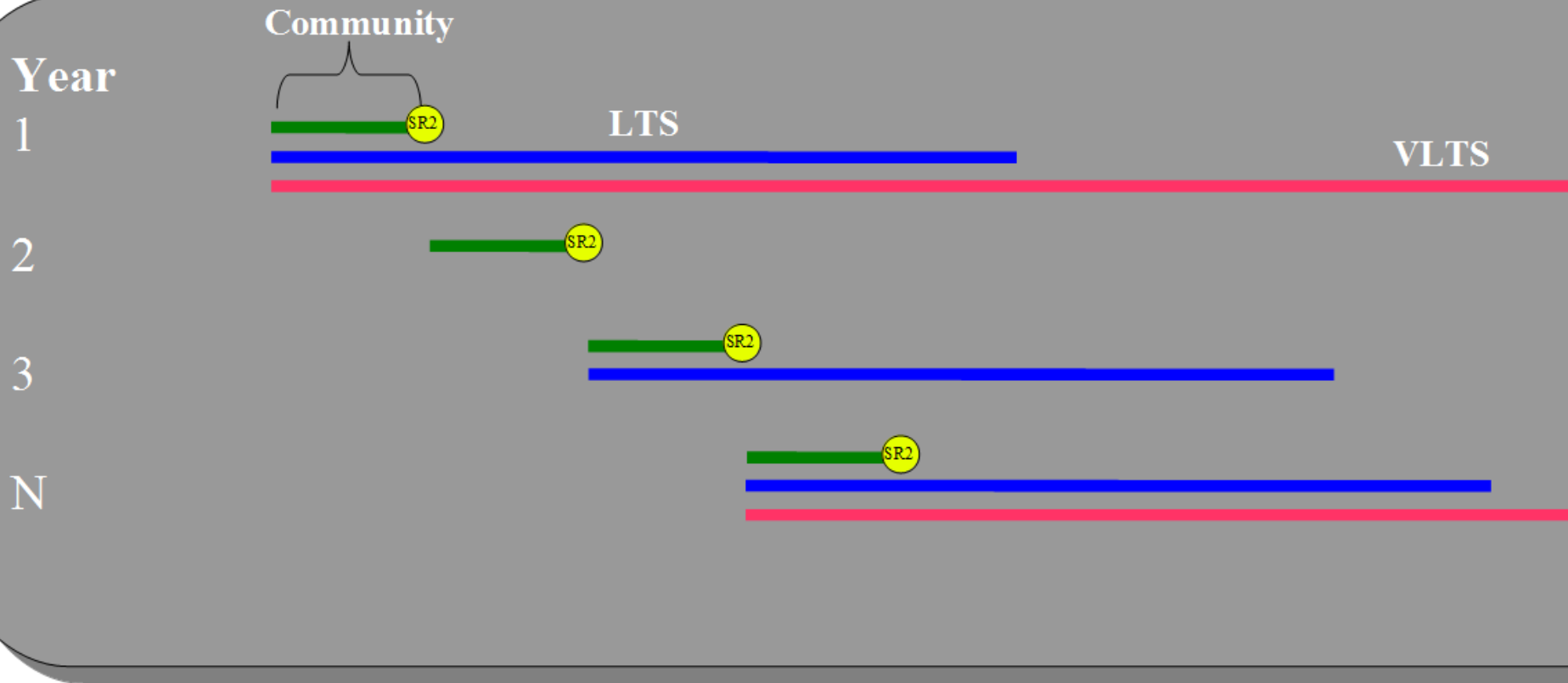


Atos

Polarsys: A New Industry Collaboration to Build Open Source Tools for Safety-Critical Software Development

Ludwigsburg, Germany – November 2, 2011 - A new open source industry collaboration, called Polarsys, is being created at the Eclipse Foundation to focus on building and maintaining tools for safety critical and embedded system development. Interested parties in Polarsys include Airbus, Astrium Satellites, ATOS, CEA, CS (Communication & Systèmes), Ericsson, IRIT (Institut de recherche en informatique de Toulouse), Inria, Katholieke Universiteit Leuven, Obeo, Universidad Politécnica de Valencia, Tecnalía, Thales, and Xipp. Polarsys will operate as a Eclipse Industry Working Group and be open to any organization interested in participating in the goals of the group.

Long Term Support



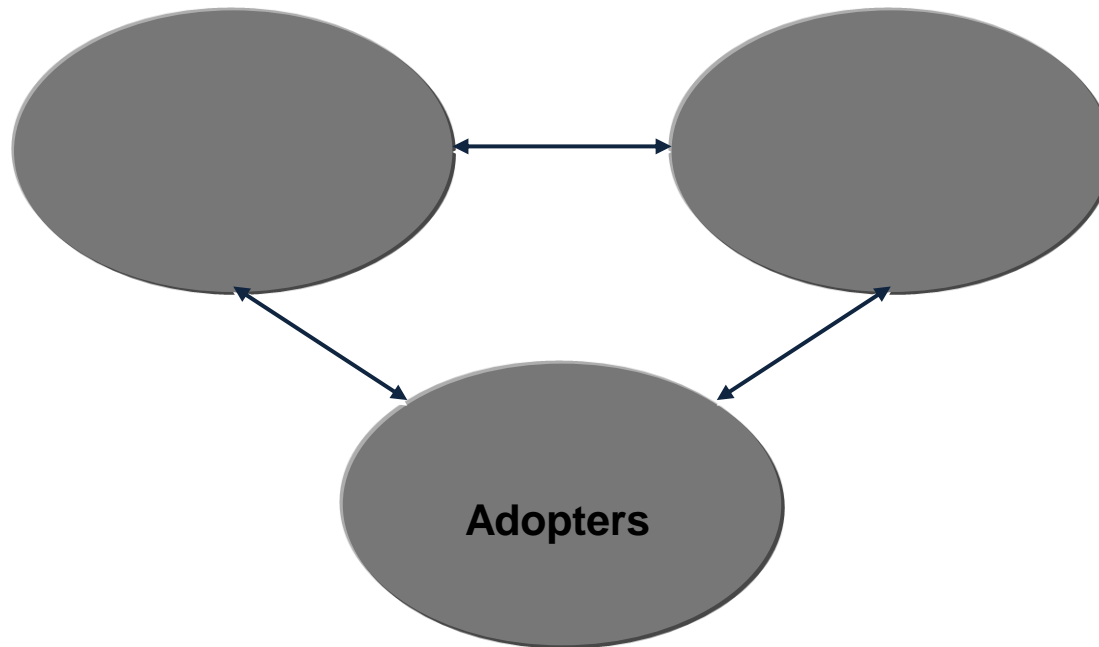
Long Term Support



- Delivering value to the ecosystem
- Reduce costs for all who rely on Eclipse code in their products
- Opportunity for members to lower resource requirements



A Community of Communities



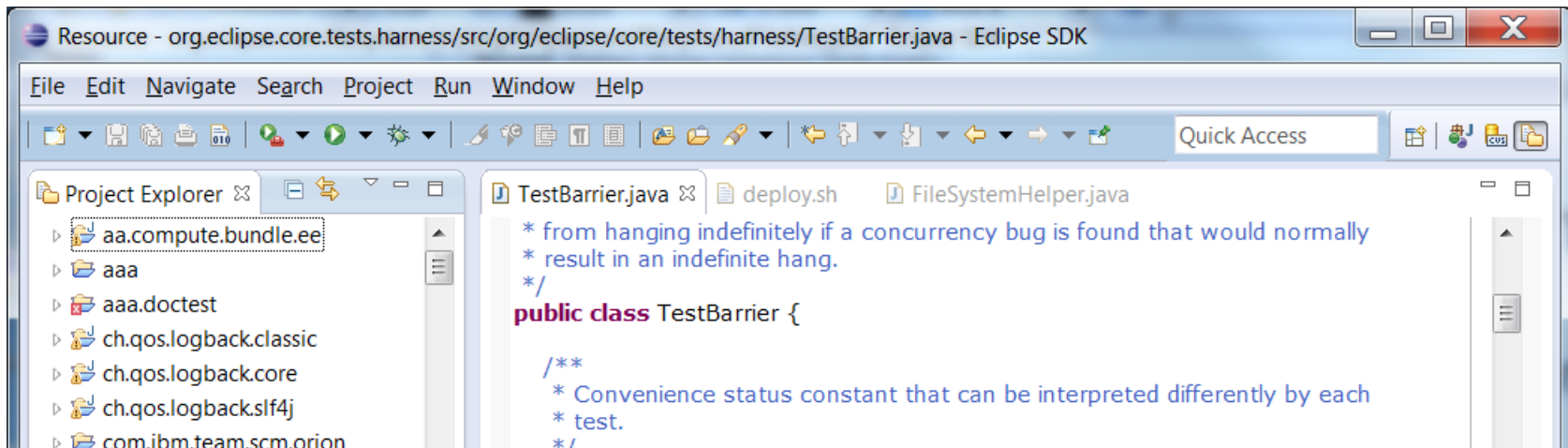
What is in Eclipse Platform 4?



- Complete rewrite of platform user interface (“Workbench”)
- User interface driven by EMF model
- Pluggable rendering and styling engines
- CSS skinning of user interface
- Declarative service model using injection, annotations
- API is 100% binary compatible with 3.x Platform

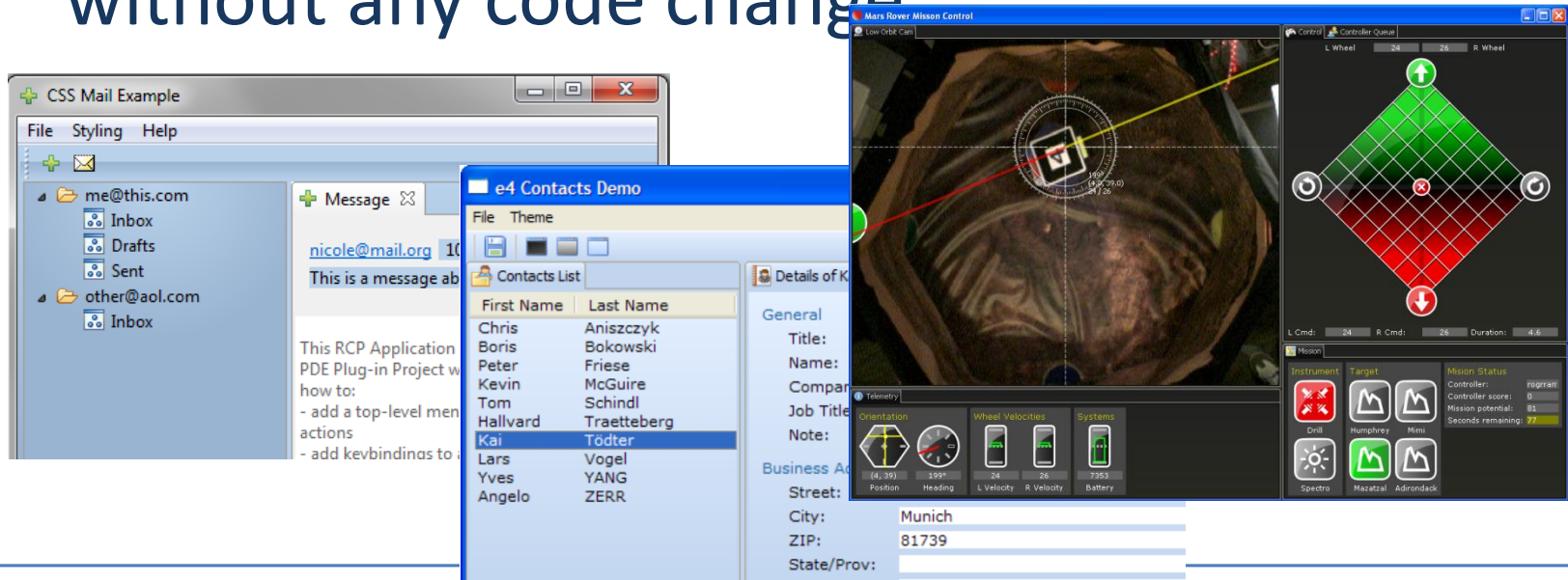
What does this mean for end users?

- All the end user functionality of Platform 3.x
- More flexible: views stacked with editors, views in dialogs, detached editors
- Refreshed user interface design: more use of space, less lines and clutter, global search bar



What does this mean for adopters?

- Greater flexibility to customize structure and layout of workbench through model and renderer changes
- Greater flexibility to style user interface without any code change



What does this mean for plugin authors?



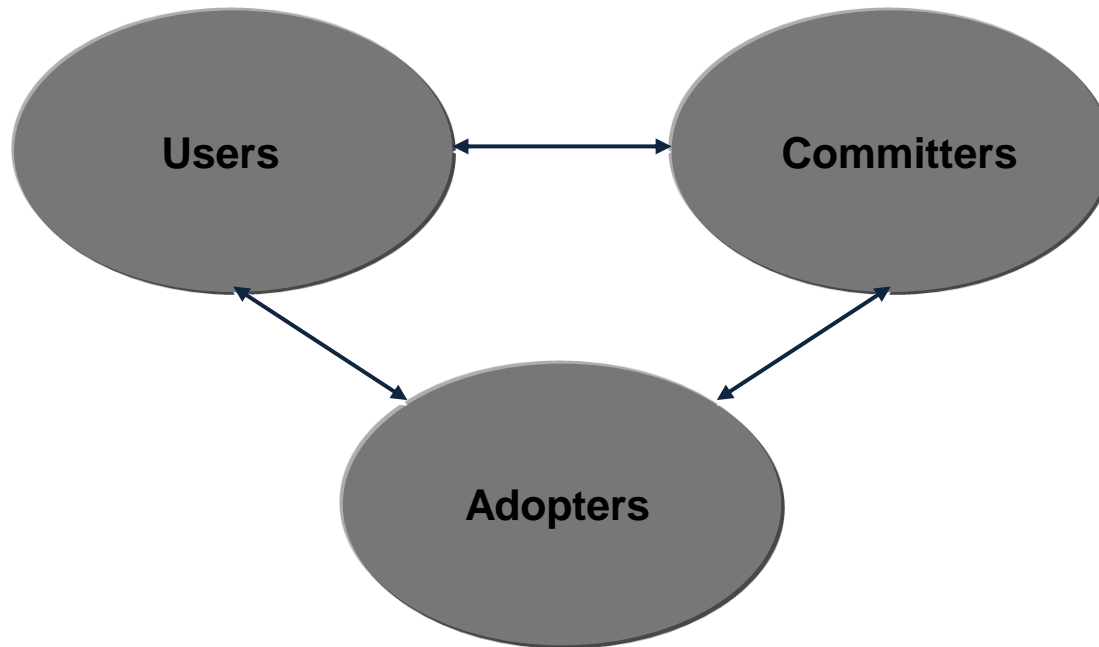
- Very little: All the same API is fully supported
- If you rely on platform internals you may need to make changes
- Can start using service injection in views/editors
- Test your plugins and report problems to Platform team



Going forward

- 3.8 Platform release was shipped concurrently with Juno for those not ready to move
- All major feature work and testing effort is focused on 4.2 Platform version
- No 3.x releases beyond 3.8 planned

Something for everyone!





Thank You!

Questions?

mike@eclipse.org
@mmilinkov