

Eclipse: The Evolution and Future of IDEs



2015
8

@eclipse_che
#IoTDay

What is needed to make a contribution?



IDE

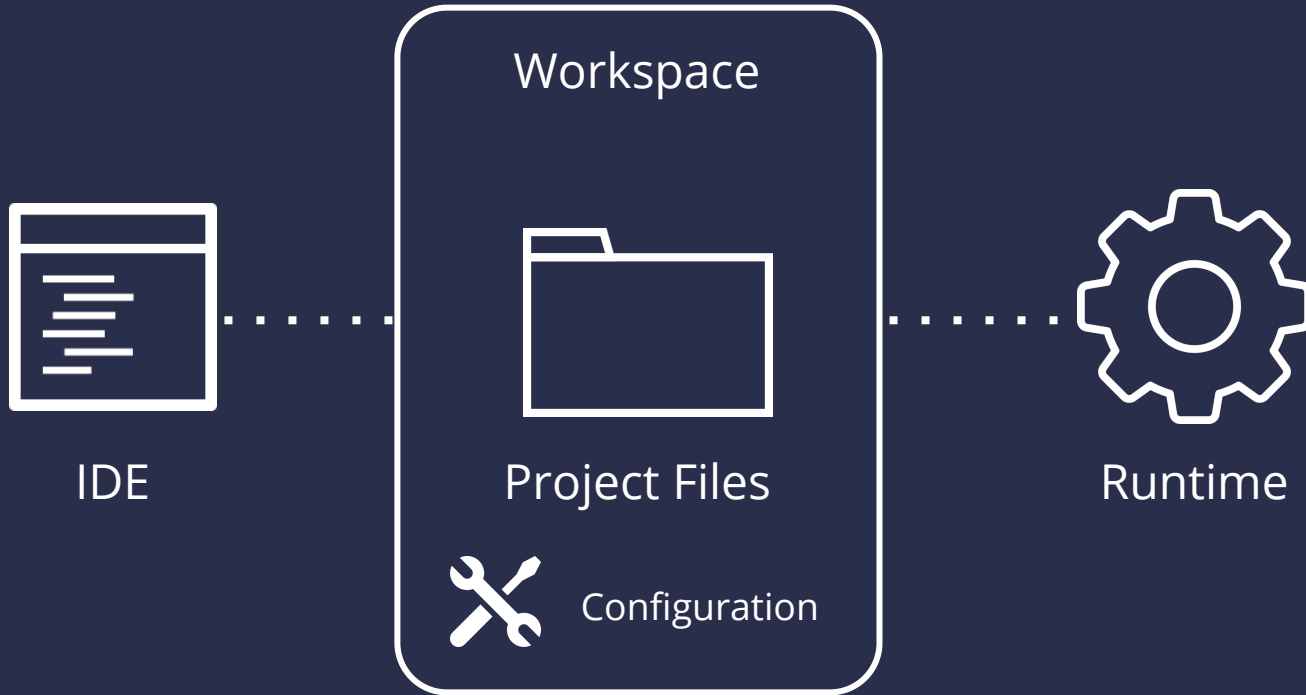


Project Files



Runtime

Workspaces include projects and config



Localhost runtime has constraints



sharing



controlling



scaling

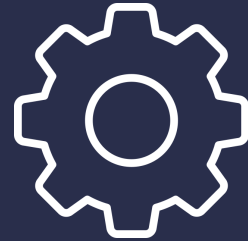
Redefine the workspace



IDE



Project Files

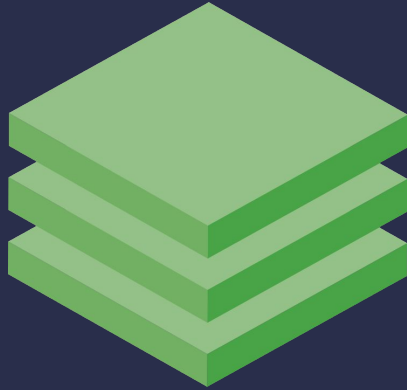


Runtime

Eclipse Che is an
open source project
to make workspaces
universal.



Workspaces bring their own runtimes



Projects are mounted into the runtimes



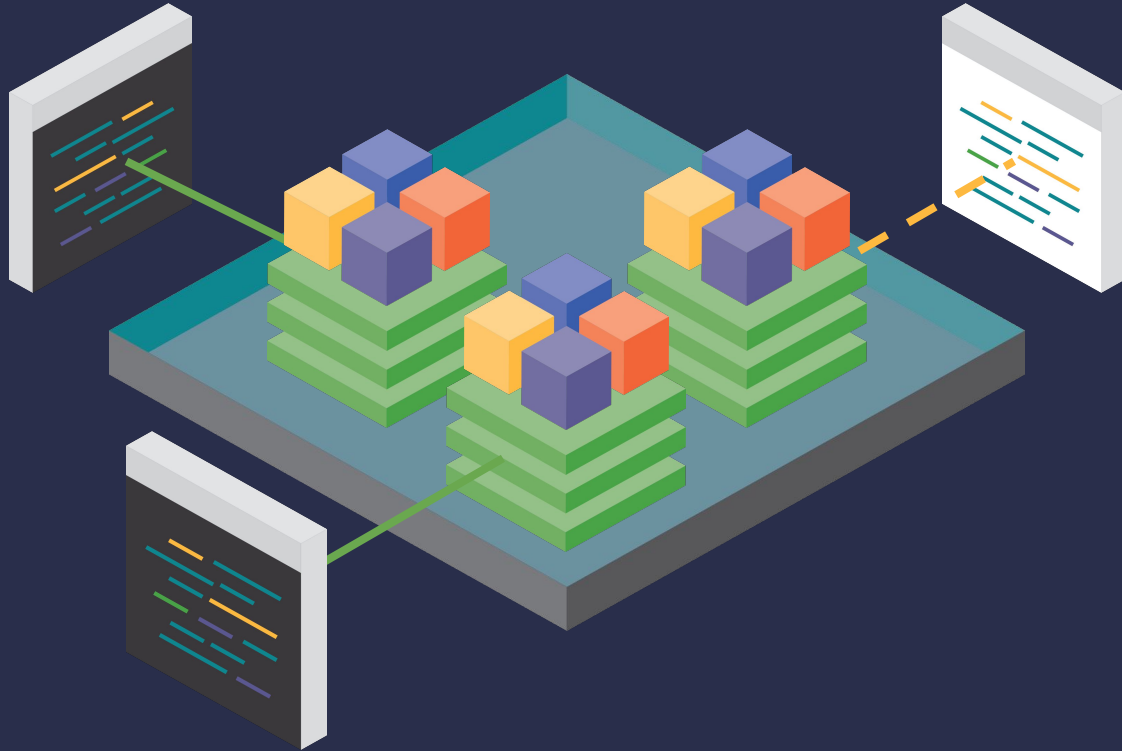
Workspaces serve their own browser IDE



Desktop IDEs can connect over SSH



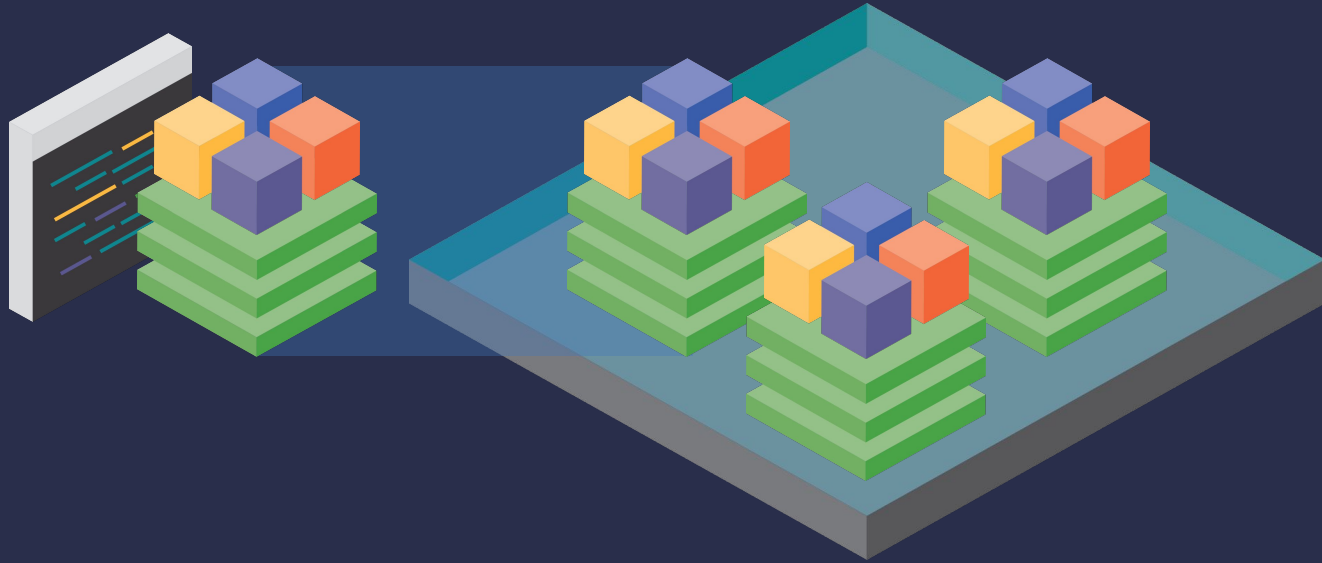
Workspaces are hosted in Che's server



Workspaces are shareable



Workspaces are portable



{ ☁ } Codenvy



http://someurl/factory?id=a_project



Load or create new workspace



Securely onboard developer

The dream realized



Developer Workspace

Codenvy ❤️ open source



4 GB Workspaces

Samsung Developer conference



April 27-28, 2016
#iHeartSDC

Artik IDE



Samsung

ARTIK™ IDE

Powered by Eclipse Che

Artik devices



- SSH, USB
- MQTT, COAP
- Rules with Artik Cloud (process incoming data)

Manage Artik devices

The screenshot displays the IDE's 'Targets' panel on the left, which is organized into a tree view. Under the 'SSH' category, the target 'artik10' is selected. The 'Target Definition' dialog on the right shows the following configuration:

- Name: artik10
- Host: 50.174.128.40
- Port: 22
- Login: root
- Password: (masked with dots)

A green notification banner at the top of the dialog reads: "Successfully connected to target artik10". At the bottom of the dialog, there are buttons for 'Disconnect', 'Cancel', 'Save', and 'Close'. The IDE's Explorer panel on the left shows a project structure with folders for 'DOCKER' (containing DEBIAN_JDK8, UBUNTU_JDK8, generated-Artik, and generated-java) and 'SSH' (containing artik10). The Consoles panel at the bottom shows active sessions for 'DEV' and 'SSH'.

Artik IDE



Video

Get started with Samsung ARTIK™ IDE

Sources

github.com/eclipse/che

Dev List

che-dev@eclipse.org

IRC

[#eclipseche](#)

Gitter

gitter.im/eclipse/che

And of course...

BETA

eclipse.org/che/artik

Getting started guides

Downloads

Documentations

Contribution guide