



# UI MDA Engineering Solution

Yves YANG

# Agenda

- Purpose
- Features
- Architecture
- Project update
- Roadmap



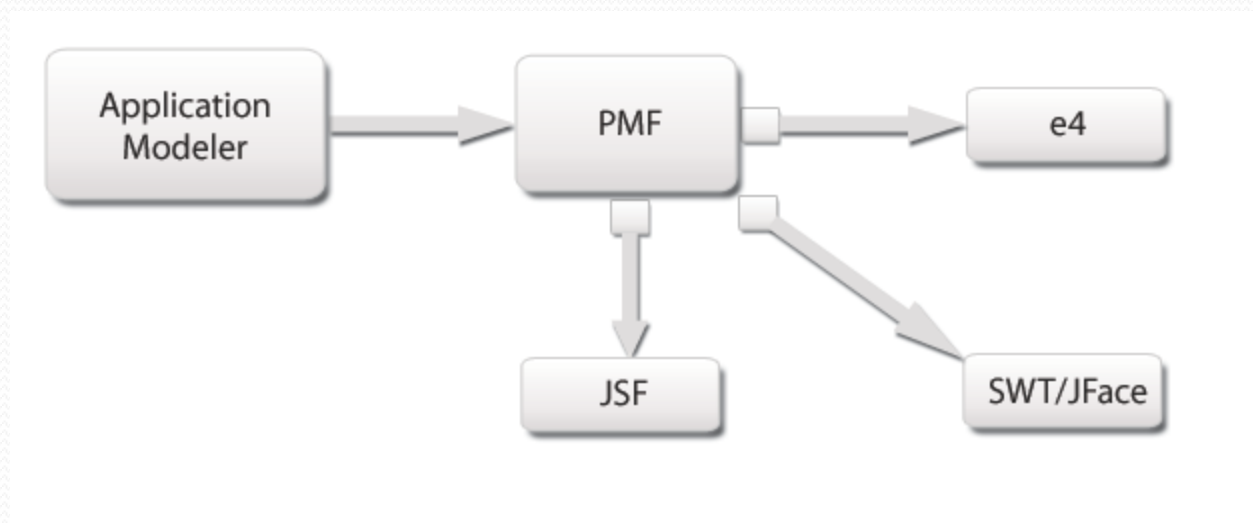
# Purpose

- Terminology
  - UI – User Interface  
Widget control + Event Handling = SWT/Jface
  - Presentation - UI with Data  
UI, Data Binding, View Management, Presentation Patterns, ...
- Motivation
  - UI Technology is changing quickly
  - UI development takes a lot of time and requires knowledge
  - Complete the MDA tool-chain
  - Lack of easy-to-use tools to do UI

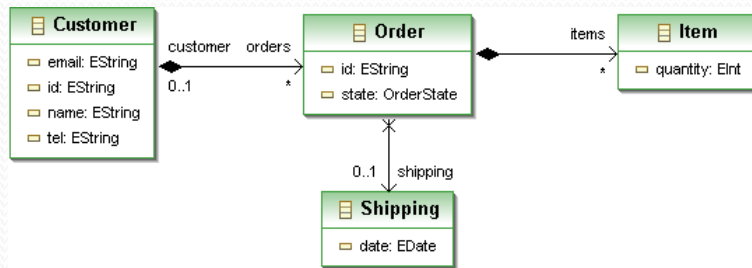


# Purpose

- PMF is a high Extensible Enterprise Modeling Solution for data presentation.



# Demo



EMF model



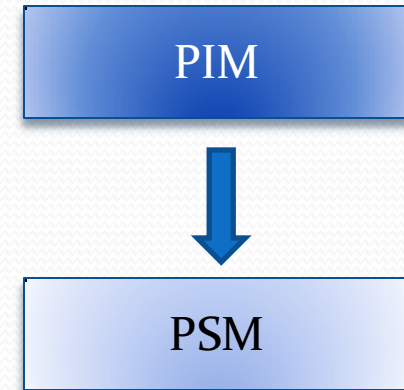
The screenshot shows the 'e4 customers Demo' application window. It features a 'File' menu and several data entry sections:

- customer:** name (Thomas Guiu), id, email (thomas.guiu@soyatec.com), tel (0123456789).
- orders:** A table with columns id, state, and shipping.date. Data rows: (001, Completed, Sun Jan 10 10:18:27 CET ...), (002, Paid, Tue Mar 16 12:08:17 CE...).
- items:** A table with columns quantity, product.name, and product.price. Data rows: (10, A nice red pen, 2.0), (25, A nice blue pen, 2.3).
- shipping:** address (street: Allée de monégasques, city: Massy, country: FR, zipCode: 93100) and date (1/10/10 10:18 AM).

e4 Application

# Purpose

- Abstraction
  - Data Model
  - UI Model
  - Data Binding technology
  - Target programming language
- Extensibility, Integration & Customization
  - UI Model
  - Model Transformation engine
  - Integration with other tools such as DSL
- Top-down approach



# Purpose

- Runtime mode
  - Interactive
    - Standalone
    - Embedded in other tools
  - Automated
    - Integration in build system
- Users
  - Framework developer
  - Application designer



# Purpose

- Benefices
  - Make UI development easier
  - More productive
  - Separate roles in UI development to enable specialization and customization
  - Integrate UI development with other Eclipse tool stack





# Features

- Data Model Management
- Data Binding
- Presentation Modeling
  - Static UI
  - Dynamic UI
  - Page Flow
    - Wizard, BPMN
- View Management
- Application Management



# Features

- Data Model Management
  - Data Model  
EMF, Java, UML etc
  - Data model services
    - Data binding
    - Model transformation
      - Code generation



# Features

- Data Binding modeling
  - Model connection
    - Simple binding
    - Path binding
    - Aggregation binding
  - Validation
  - Data conversion
  - Error Handling



# Features

- Presentation modeling
  - Static UI
    - Master/Detail
  - Dynamic UI
    - Control Event based
    - Data Event based
  - Page flow
    - Transaction Edition
    - Wizard
    - Finder

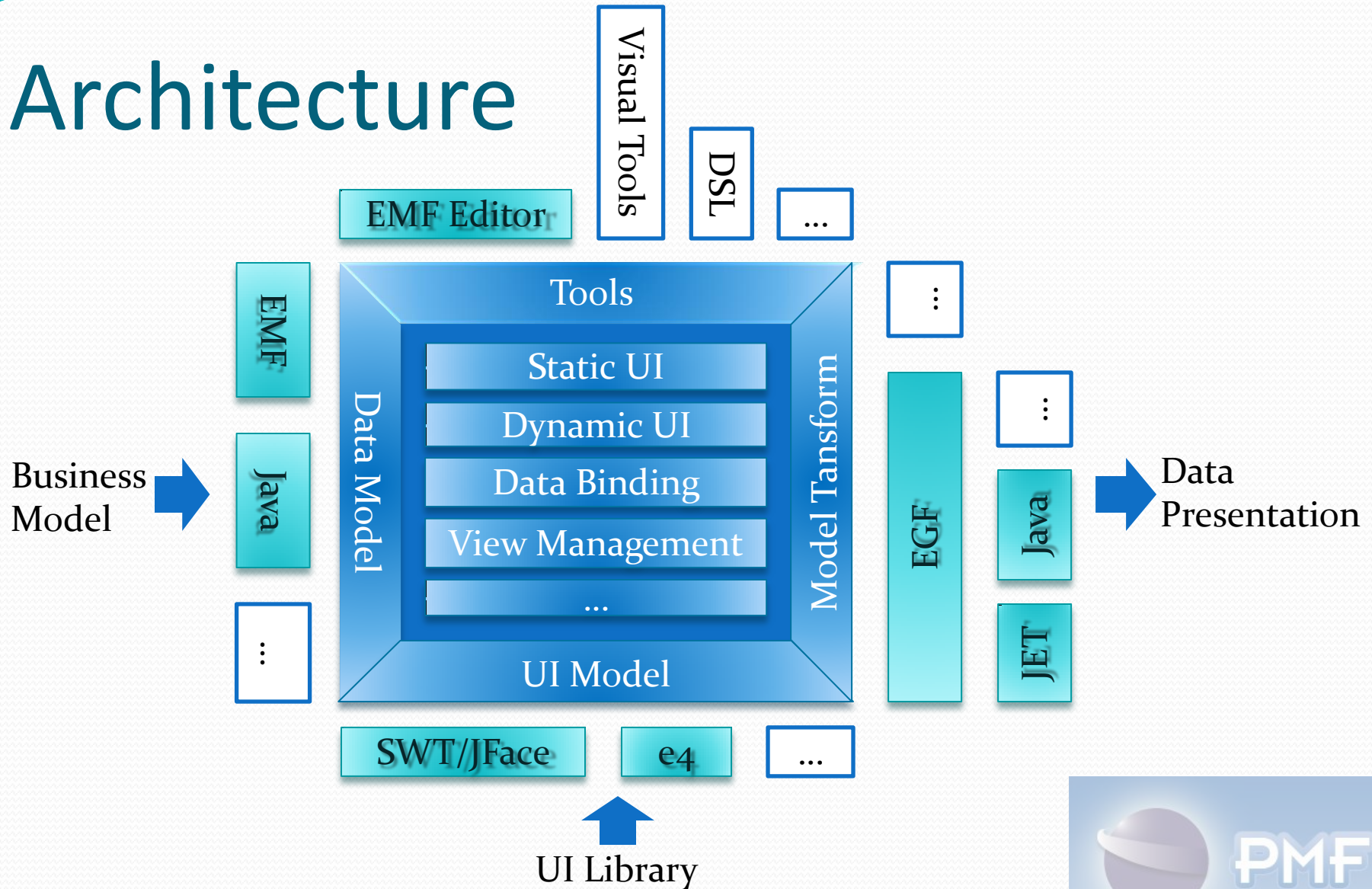


# Features

- View Management
  - Each data type may have more than one view
  - One view can be changed in some conditions
    - User Profile
    - Execution context
    - Security role



# Architecture



# Project update

- Contribution

- PIM

- Yves YANG with the participation of Jim Van DAM

- Data Model (100%)
      - Data Binding model (80%)
      - UI Model (30%)
      - View Management (25%)
      - Application structure (80%)

- EMF reflective editor

- Yves YANG

- Code Generation on EGF for e4/XWT (POC)

- Thomas GUIU



# Roadmap

- Vo.9 - Summer 2010
  - PIM – Dynamic UI
  - Integration of e4/SWT/Jface
  - Integration of e4/XWT
- V1 - June 2011
  - View management
- TBD
  - Integration of Wassabi
  - Integration of other solutions
    - Web, Android, iPhone, ...
    - Xpand, MTL ...
    - Xtext, ...
  - Page flow





# Info

- Web: <http://www.eclipse.org/pmf>
- Wiki: <http://wiki.eclipse.org/pmf>
- Newsgroup: eclipse.pmf
- Mailing list: [pmf-dev@eclipse.org](mailto:pmf-dev@eclipse.org)

