



Eclipse Modeling Platform

An Open Collaboration



Agenda



Who We Are

The Industry Collaboration Model

The Eclipse Modeling Platform Initiative



This is Eclipse



- Launched in 2001
 - Initial release of the Eclipse technology platform (Platform, JDT, PDT)
 - Founding consortium board comprised Borland, IBM, Red Hat.....
 - Eclipse Foundation formed in 2004
 - Independent not-for-profit organization formed in 2004
 - Definition of bylaws, membership model, initial IP process
 - Eclipse Foundation today, 2010
 - Members include IBM, Oracle, SAP, Nokia, Motorola, Cisco, etc.
 - 165 members, (22 strategic members, 3 enterprise member), 940+ committers
-

Members of Eclipse



Agenda



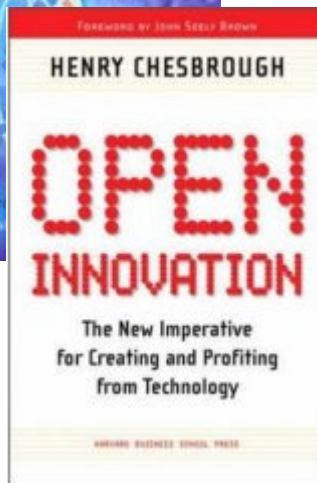
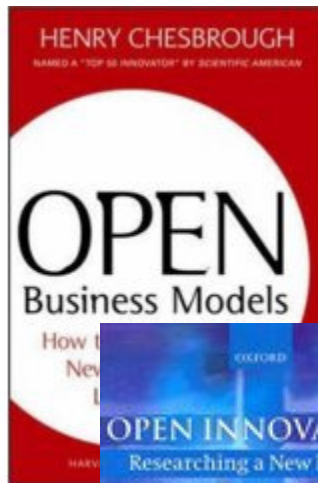
Who We Are

The Industry Collaboration Model

The Eclipse Modeling Platform



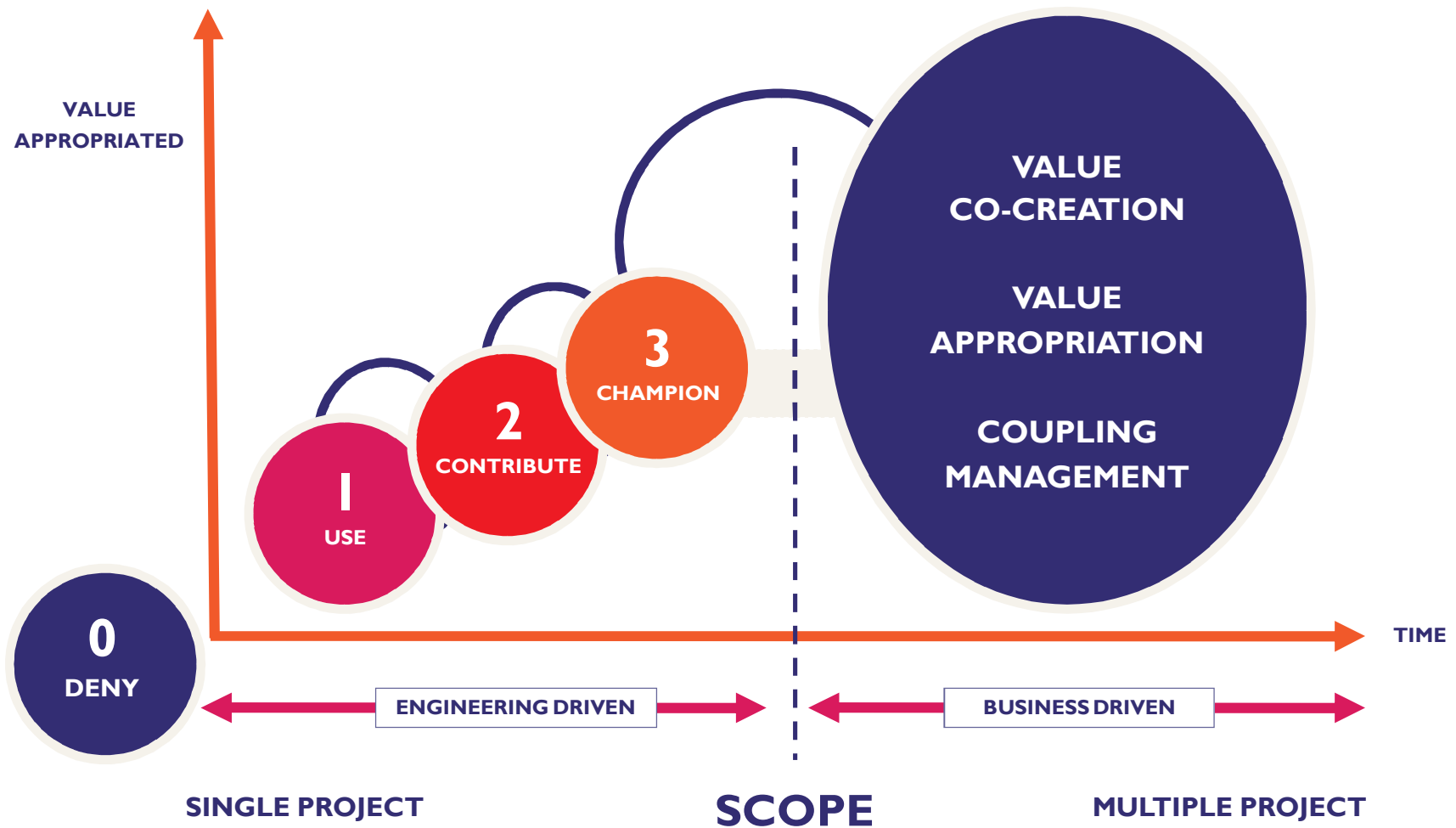
Open Innovation



Open Innovation is a paradigm that assumes that firms can and should use external ideas as well as internal ideas....The Open Innovation paradigm treats R&D as an open system.

Open Innovation: Researching a New Paradigm

Engaging With Open Source



Business Agility Drives IT Agility

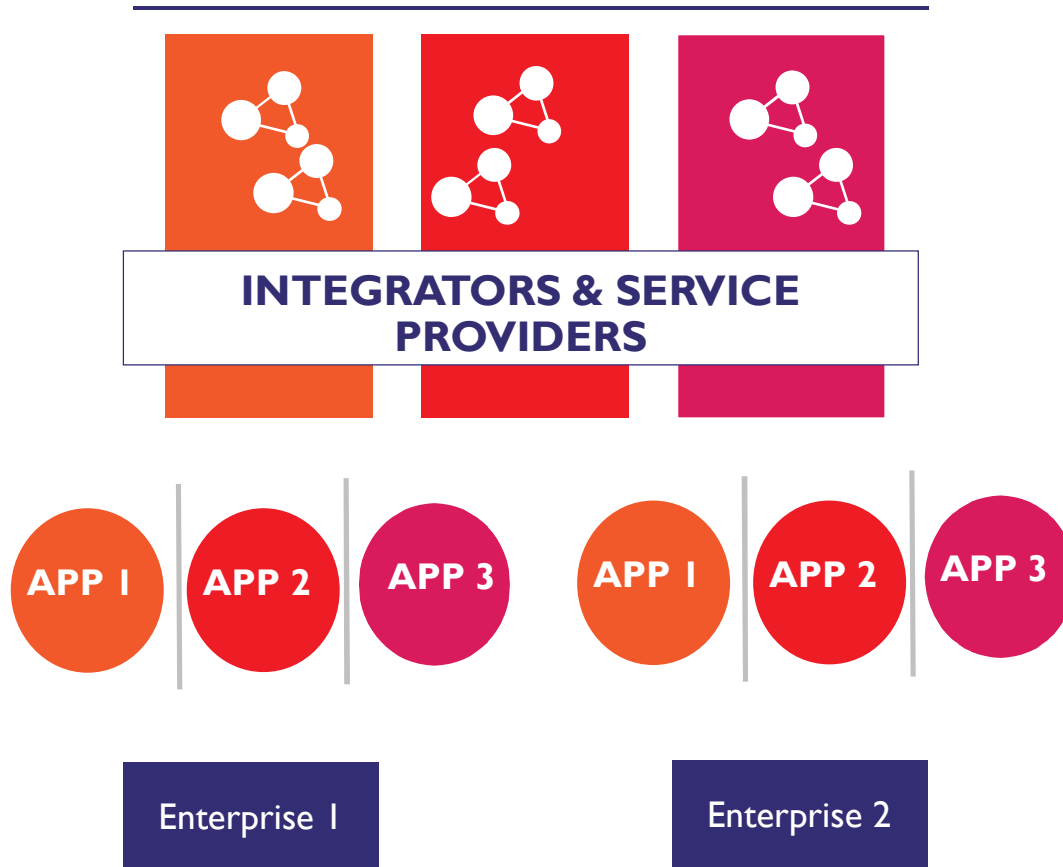


- Drive for Business Agility
 - Respond quickly to new regulations, standards and customer opportunities
 - Requires IT Agility
 - Drive implementations in a cost-effective manner
 - Current IT Solution Not Sufficient
 - A new opportunity for collaborative development
-

IT Solutions Today



COMPONENTS AND FRAMEWORKS



- **Assets belong to integrators** and service providers
- **Architectures** dictated by suppliers
- **Re-use** of standard components not likely; re-use is to the benefit of the owners
- Supplier lock-in / dependency
- **Application silos**; Integration / Interoperability issues
- Potential mismatch functions required vs functions delivered
- **High costs** for development and maintenance for custom apps

A New Way: Open Collaborative Development

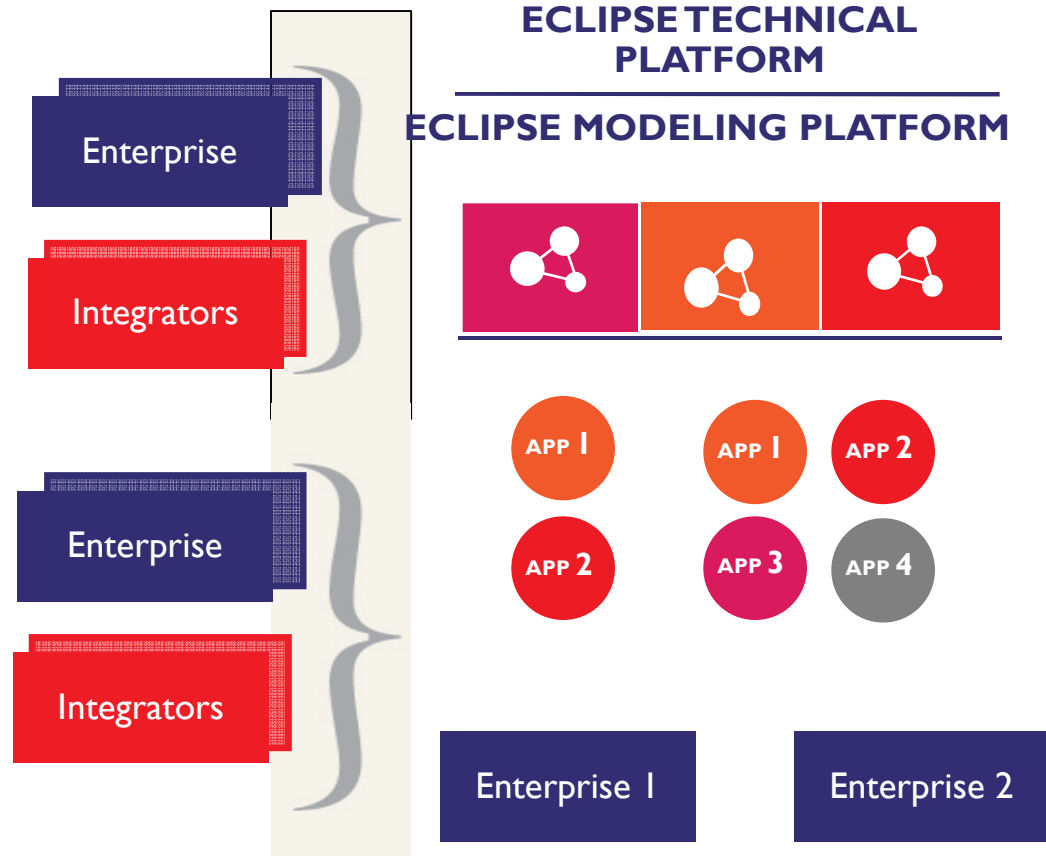


- Eclipse and Open Source Software (OSS) is a proven new way for collaborative software development
 - Eclipse has established best practices for multi-organizational collaboration, including development process, IP sharing, technical architecture and governance.
 - Example
 - Eclipse Web Tools Project includes participating by Oracle, IBM, SAP, BEA
 - Eclipse C/C++ Development Tools includes participation by Wind River, TI, IBM, QNX, Symbian, others...
-

Collaborative IT Solutions of Tomorrow



- **Shared development** and maintenance of 'commodity components' leads to **cost savings**
- Functionality **driven by the users**
- **Architecture standardized** through Eclipse Technical Platform
- **Good re-use** of platform components possible (e.g., BI, Reporting, BPM, Application Infrastructure)
- **Better integration** / interoperability
- Create an **open platform** for easy adoption by customers and partners



Open Source Platforms



Open Source development model encourages open innovation

Openness, Transparency, Meritocracy

Anyone can participate

Open Source licensing allows competitors to collaborate on infrastructure technology

No requirement for royalties.

No single control point of intellectual property

Open Source business model encourages rapid adoption of technology

It is free, easy to access and easy for others to add value

Agenda



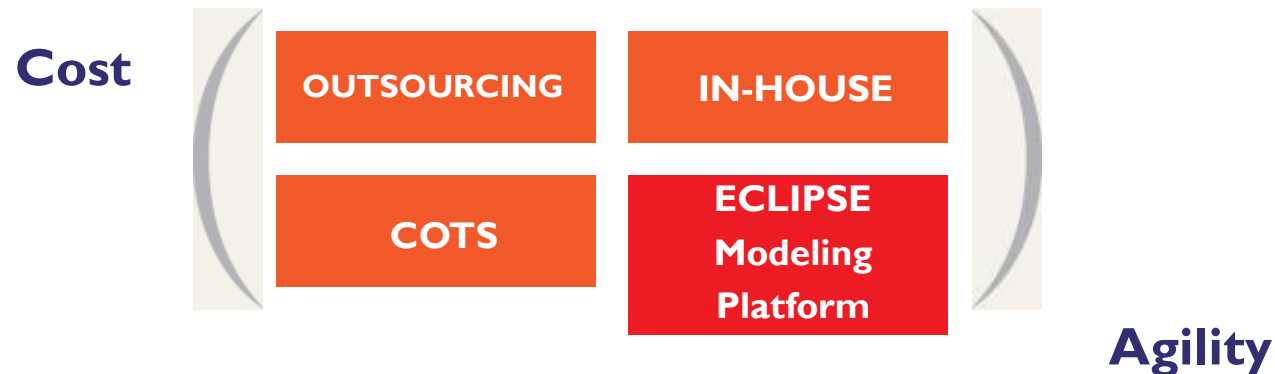
Who We Are

The Industry Collaboration Model

The Eclipse Modeling Platform



Collaborate for Business Agility



Eclipse Modeling Platform will:

- Better meet user requirements due to collaborate nature and flexible architecture
 - Share implementation and maintenance cost between organizations
 - Deliver an open platform that can be used and extended by customers and partners
-

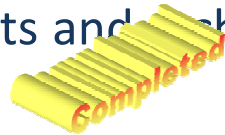
Eclipse Modeling Platform (EMP)

- An industrial quality integrated software platform to enable a complete tool chain of model-centric tools used by organization focused on model driven development.
- The platform will be based on existing Eclipse modeling technologies but focus on better integration, quality, scalability and usability for modeling professionals.
- The requirements for EMP are being set by some of the largest companies using model driven development.
- EMP will be developed as a collection of open source projects and encouraging a commercial ecosystem of value-add tools and services.

Steps for Creating the Eclipse Modeling Platform



Phase 1: Publish initial requirements and architecture document for Eclipse Modeling Platform



Phase 2: Create project plan for the implementation of Eclipse Modeling Platform

- Will require funding of external consultant to create the plan.

Phase 2b: Create Eclipse Industry Working Group

- Organizations required to become members of the Eclipse Foundation

Phase 3: Agreement on project plan and begin implementation

- Will require funding of resources
-



- Industry Working Group (IWG) offers an opportunity for organizations to collaborate at the Eclipse Foundation
 - IWG provide the framework for IP sharing, decision making, ability to pool resources and support IT infrastructure
 - IWG has two levels of participation:
 - Steering Committee Member are organizations that form the executive council of the IWG
 - Participant Member are the organization that support the IWG work
-
- Participants of the IWG must be members of

Why an Industry Working Group?

- Open source projects are great for delivering code
- But not very good for...
 - Coordinating long-term organizational commitments, including shared resources
 - Setting requirements and architectural direction
 - Signaling corporate involvement for ecosystem support
 - Legitimacy of organization involvement

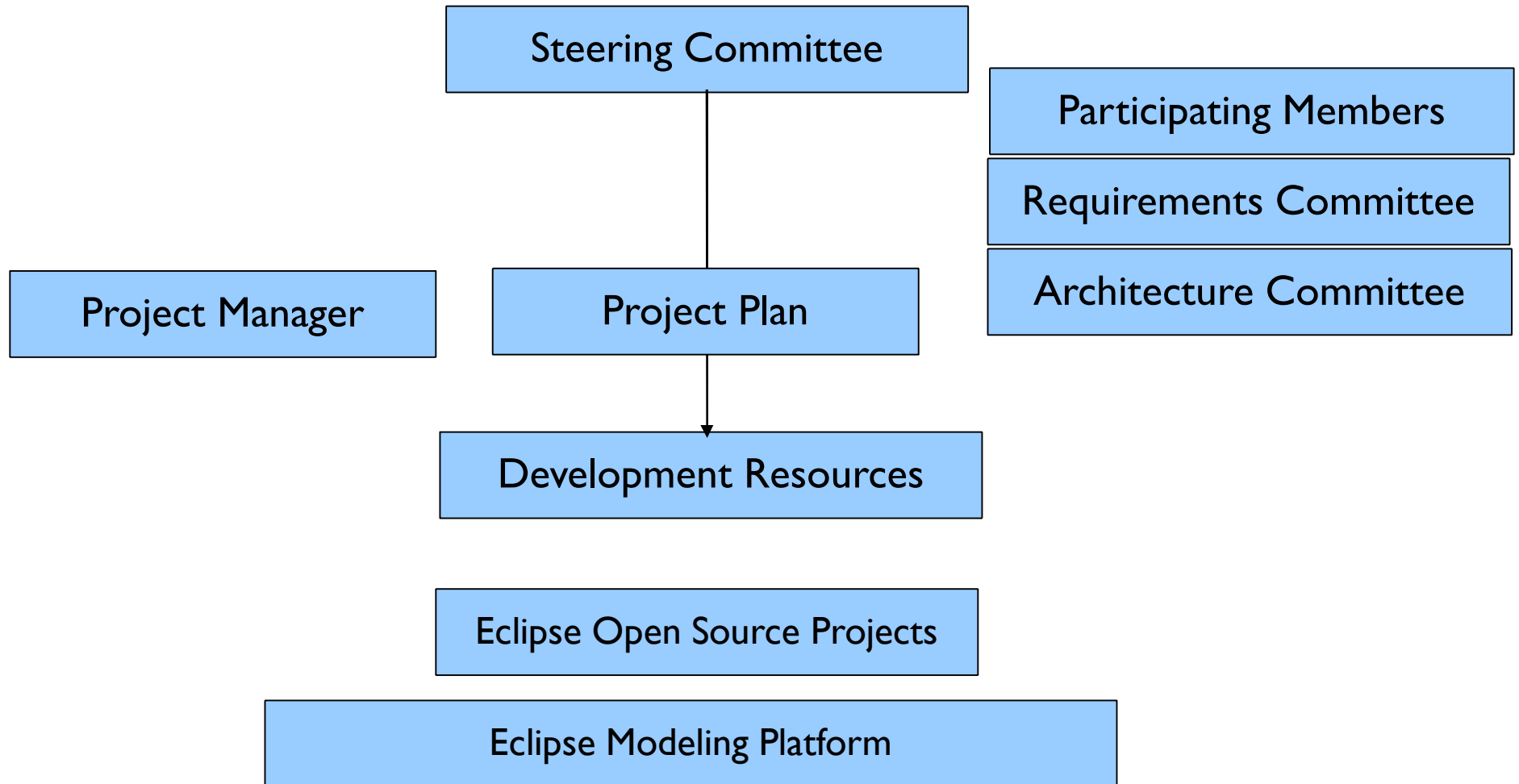
Working Group Becomes an Industry Consortium

Role of Eclipse Foundation



- Provide the legal agreements for sharing intellectual property.
 - Project management for the working group.
 - IT Infrastructure to support the working group.
 - Act as contracting agent for any shared resources.
 - Provide a formal organization governance structure.
 - Recruitment of new participants and ecosystem development required for longevity of the platform.
-

Organization Governance



Cost Structure



- Phase 2: Project Plan
 - Consultant is required to develop a detail project plan that maps the EMP requirements and architecture to the existing Eclipse project and organizations environments.
 - Cost: estimated 50K Euros (split amongst participants)
 - Phase 2b: Create Industry Working Group
 - Organization will need to join the Eclipse Foundation
 - Enterprise Membership is US\$125K/ year
 - Solution Membership is US\$20K/ year
 - Phase 3: EMP Implementation
 - Cost still needs to be determined in Phase 2
 - Expected cost will be shared amongst participants
 - Costs will be spread out over 2-3 year period
-

Next Steps for the Working Group

- Proceed with the Project Plan
- Move the mailing list and wiki into the public
- Recruit other participants





Questions?

