

# Mylyn Industrial Connector

# Why yet another connector?

- Mylyn is about “yet another connector”
- There are many Mylyn connectors:
  - Bugzilla Connector: Integrates Task List with Bugzilla repository
  - JIRA Connector: Integrates Task List with JIRA repository
  - Trac Connector: Integrates Task List with Trac repository

# Why yet another connector?

- None of the current connectors gives the implementation flexibility the Industrial connector offers.
- They are all specialized and coupled to own repository.
- Connects to everything within minutes
- Can be extended with own code

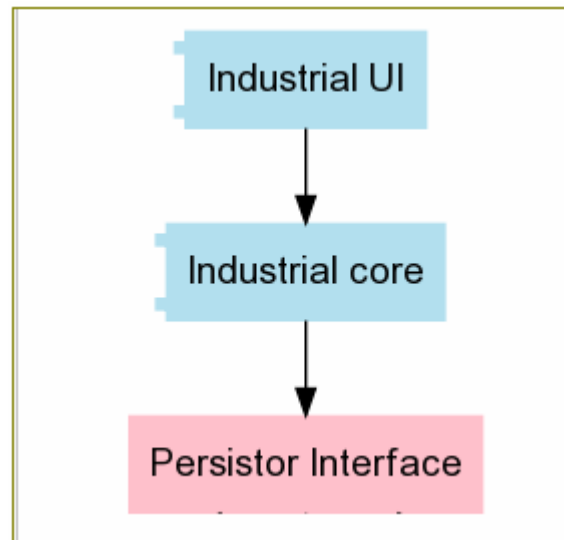
# Mylyn Industrial Connector

- Open source
- A general purpose connector
- Suitable for standalone use through embedded (Derby) database using Ibatis and JPA persisting
- Easy to implement and adapt to any data store
- Loosely designed to suit any storing mechanism

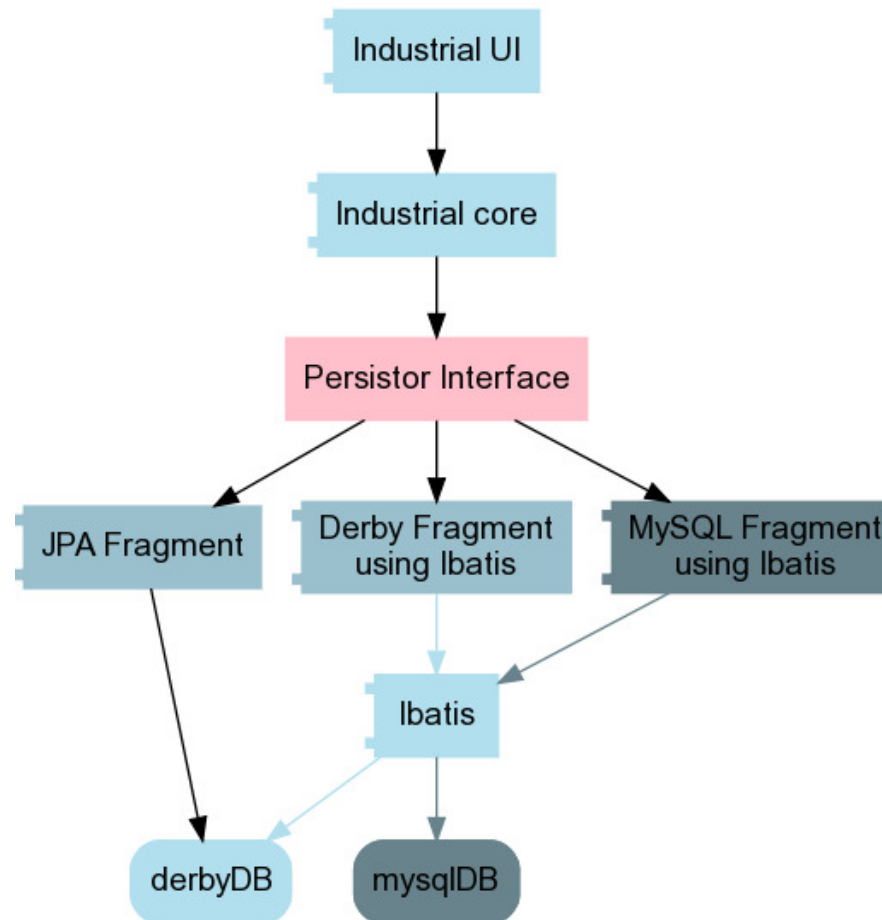
# Mylyn Industrial Connector

- Current version: 0.8.x
- Core plugins:
  - org.eclipse.mylyn.industrial.core
  - org.eclipse.mylyn.industrial.ui
- Fragments
- org.eclipse.mylyn.industrial.demo.derby
- org.eclipse.mylyn.industrial.demo.jpj

# Industrial Connector **Architecture**



# Industrial Connector Architecture



# Industrial Connector: how to use

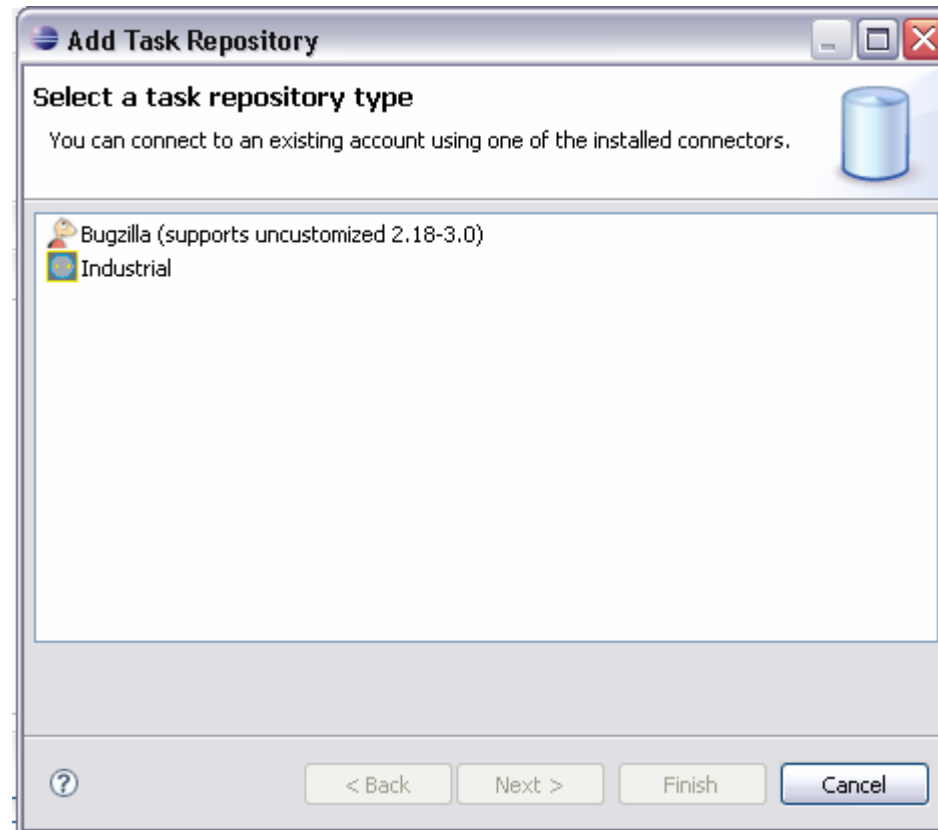
- Can be used to create local repositories to store tasks (locally) without any java coding or database creation from your part
- Or connect to an existing store/incident database/excell sheet/etc...



# A task definition

1. Repository URL
2. Task Id
3. Owner
4. Summary
5. Priority (as P1, P2, P3, P4 or P5)
6. Completion status
7. Creation and Completion Date
8. Due Date
9. Task Description
10. Task Comments
11. Task Attachments

# Adding a new repository



# Configuring the new repository

The image shows a screenshot of the Mylyn Industrial Connector configuration interface. On the left, a file tree is visible under the 'Industrial Connector' project. A red circle highlights the 'maps' folder, which contains several XML files, including 'OMS\_FIX'. An arrow points from this folder to the 'Add Task Repository' dialog box on the right.

The 'Add Task Repository' dialog box is titled 'Industrial Repository Settings' and contains the following fields and options:

- Example: jdbc:<driver>://<host>[:<port>]/<database>
- Server: jdbc:as400:172.17.2.171
- Label: JPA based repository
- Anonymous Access
- User ID: [empty field]
- Password: [empty field]
- Save Password
- Additional Settings:
  - Choose a Repository: JPA Demo
  - Choose an SQLMap config: OMS\_FIX
- Status:
  - Validate Settings

At the bottom of the dialog, there are navigation buttons: < Back, Next >, Finish, and Cancel.

# Making a new repository query

**Edit Repository Query**

**Form Based Query**

Create a Query based on existing values in the DB

Query Title: Current game

Summary: Relevant tasks to the current scrum iteration

Products	Owners	Status	Priority
V40LA	HANSUSR	*ACC	P
V40UR	HEIJ	*ANY	PH
V45AI	JAN	*CMP	PL
V45CB	JONGW	*DEV	P1
V45CD	JURAA	*DFN	P2
V45CP	KOPEH	*INS	P3
V45HD	KROSC	*LOCK	P4
V45IA	MATTIS	*NEW	P5
V45ID	MIDDA	*NOOD	P9
V45KE	OMS	*PRD	
V45LA	QUSER	*RCV	
V45UR	REMACC	*SYS	
V452E	RIDDW	*TST	
V50AI	RIDDWX		
V50CD	SANDRO		
V50CP	SETTG		
V50EC	TAAOS		
V50EP	THEO		
V50HD	TUUR		
V50IA	ULF		
V50ID	VAFAY		
V50JI	VINCENT		
V50JL	WALLS		
V50JW	WIM		

Creation Date before: 30-apr-2009 0:0 After: 16-dec-2008 0:0

Completion Date before: 21-apr-2009 0:0 After: 28-nov-2008 0:0

Due Date before: 16-apr-2009 0:0 After: 16-feb-2009 0:0

Update Attributes from Repository

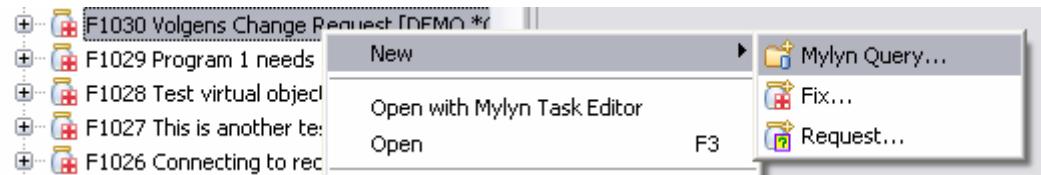
< Back Next > Finish Cancel

# Mylyn Integration with TD/OMS

First Live Implementation

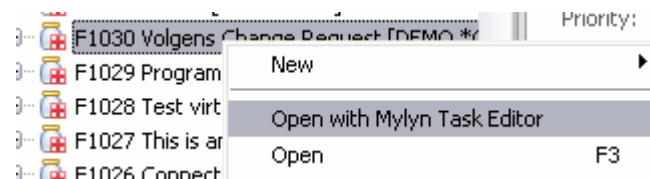
# Mylyn Integration with TD/OMS

Opening a TD/OMS fix or request in Mylyn rich editor.



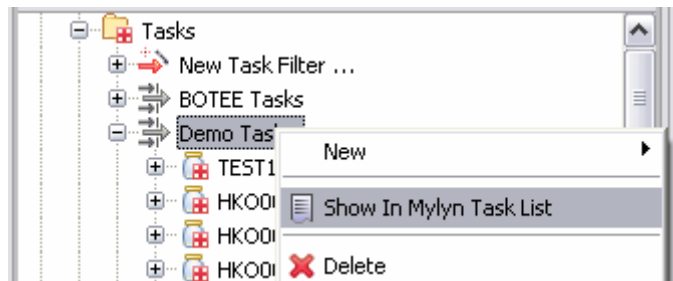
# Mylyn Integration with TD/OMS

Opening a TD/OMS fix or request in Mylyn rich editor.



# Mylyn Integration with TD/OMS

- Converting a whole TD/OMS filtered fix or request list into Mylyn list with one click.





# Mylyn integrated with TD/OOMS

The screenshot displays the Mylyn IDE interface with the following components:

- Project Explorer (Left):** A tree view of tasks under 'Tasks' and 'Demo Tasks'. The selected task is 'F1023 This is another test fix [DEMO \*NEW]'.
- Task Detail View (Center):** Shows details for 'Task DEMO.F0713'.
  - Title:** 'The speed of thought'
  - Status:** P2, \*DEV
  - Priority:** P2
  - Product:** DEMO
  - Date created:** 7-jun-2004
  - Date modified:** 7-jun-2004
  - Date due:** 11-mrt-2009
- Attachments (3):** A table listing attached files:

Name	Description	Size	Creator	Created
.xmlcatalog	xml file	457 bytes	aadea <aadea>	11-mrt-2009 14...
screenshot.png	screenshot	-	aadea <aadea>	11-mrt-2009 15...
README.DOC	Read me	14,00 KB	aadea <aadea>	11-mrt-2009 15...
- Description:** 'The Mylyn name is a tribute to myelin because many users claim that Mylyn increases efficiency to the point where they can code at the speed of thought...'
- Comments (2):** Two comments from user 'aadea' dated 11-mrt-2009 14:57 and 14:58. The first comment says 'XML file has just been attached'.

- Task List (Right):** A list of tasks under 'Demo Tasks'. The selected task is 'DEMO.F0713: The speed of thought'.
- Bottom Panel:** Shows various toolbars and status bars, including 'TD/OOMS Connectio...', 'TD/OOMS Logged Jo...', 'TD/OOMS Console', 'TD/OOMS Components', 'TD/OOMS Route Navigator', 'TD/OOMS Job Messages', 'Error Log', and 'Progress'.