



Thomas Zierer

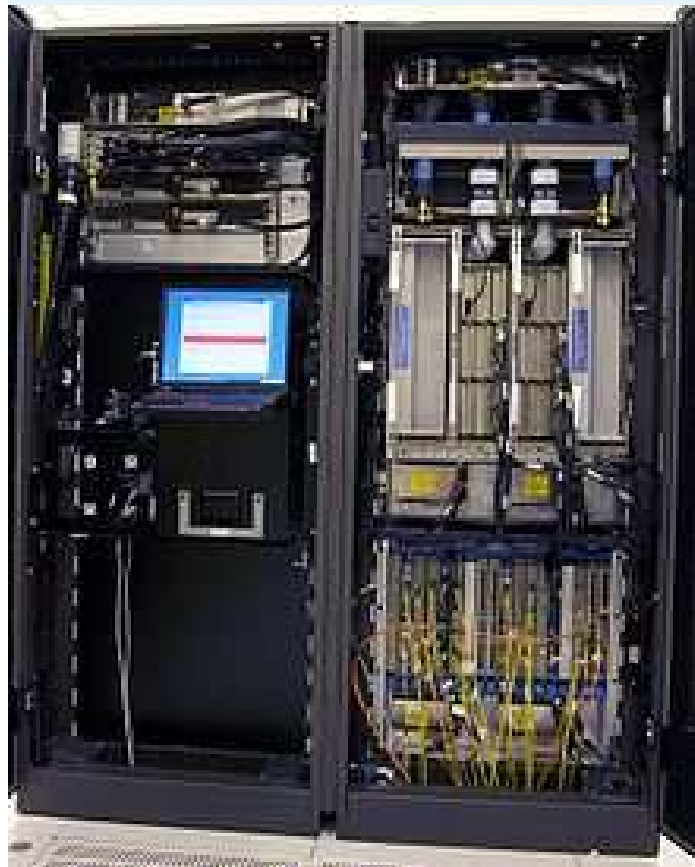
# z/Dev: Mainframe Development with Eclipse @ BayernLB

Eclipse Democamp, 6/23/2015

 Finanzgruppe Bayern

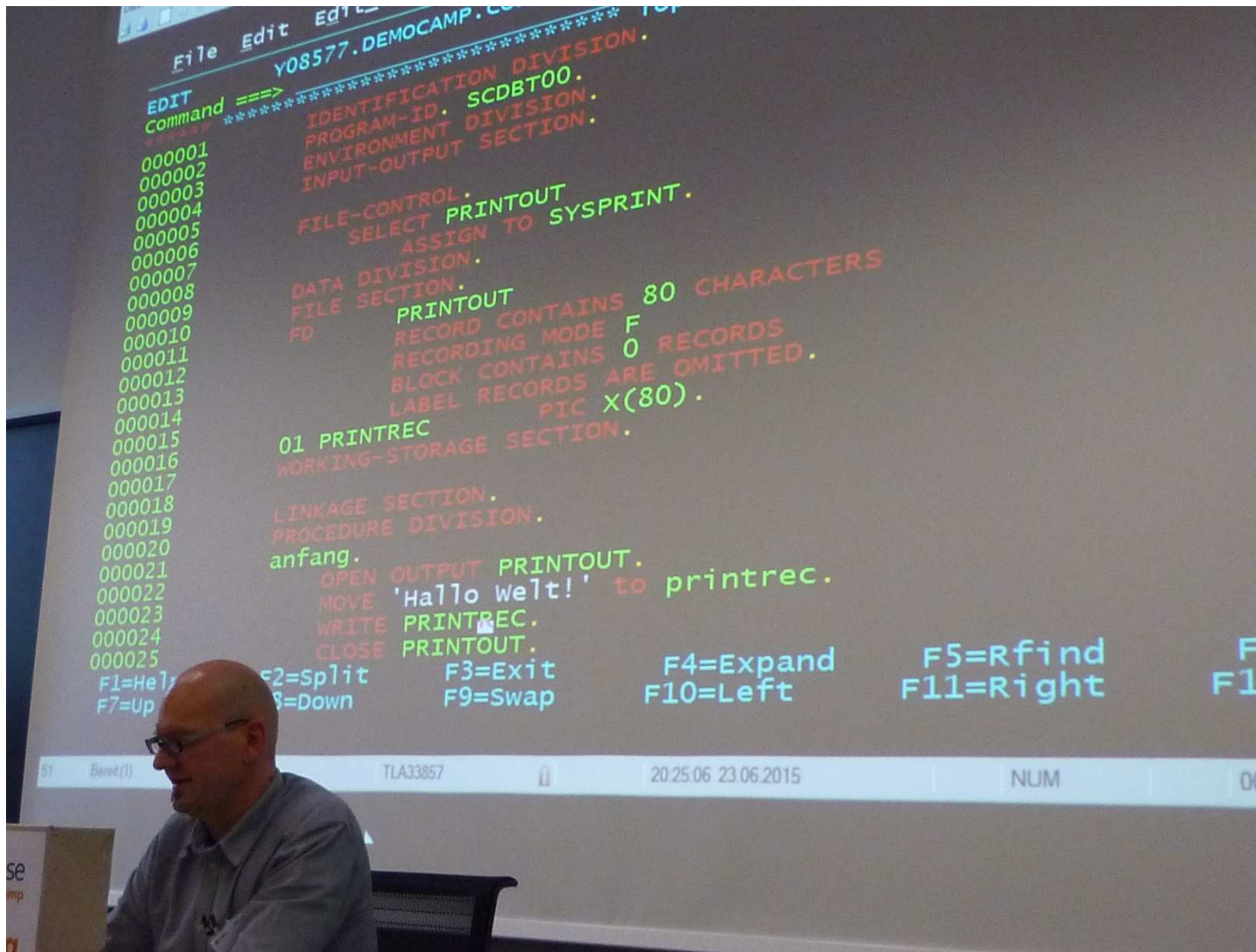
 Bayern LB

# Mainframe: What is it and why do we (still) do it?



## Big Iron

- zSeries, System z9, z10
- Operating systems MVS, OS/390, z/OS
- Languages JCL (scripting), PL/I, COBOL
- 55% of all worldwide business applications involve mainframe code (Source: IBM (who else?))



# z/Dev: Main Perspective

The screenshot displays the Eclipse IDE for z/OS, showing the main perspective with several key components:

- Datasets:** A tree view on the left showing a project structure for 'Y08577.DV'. It includes folders like 'PLIXCLGO', 'SCDBT00', 'SCDBT01', 'SCDBT02', 'SCDBT03', 'SCDLL01', 'TEMP', 'XMLSAMPL', 'ZFS', and 'Y08577.DV.PLI'. Sub-folders under 'Y08577.DV.PLI' include 'DVMQ110', 'DVMQ402', 'DVMQ600', 'DVR=DLL', 'DVR99W', 'CP100', 'IM996', 'IM997', 'IM998', 'IM999A', 'INSTALL', 'M009', 'M013', 'SCDBT00', 'SCDBT01', 'SCDBT02', 'SCDBT03', and migrated files like 'Y08577.DV.REC', 'Y08577.DV.REX', 'Y08577.DV.SPUF', 'Y08577.DV.STKLINK', 'Y08577.DV.XML', and 'Y08577.DV.XML.UTF8'.
- Editor:** The central workspace shows a COBOL program named 'SCDBT03 - Uebungsprogramm Debug Tool Schulung'. The code includes comments, block definitions, and SQL statements. A callout points to the code area with the label 'Editor'.
- Endevor (SCM + CI System):** A panel on the right shows a project tree for 'BLBPROD' with sub-projects 'AB', 'ABA', 'AG', 'AL', 'ALD', 'ALI', 'ALM', and 'PGM'. The 'PGM' folder contains several ALM files (ALM001.pli to ALM202.pli). A callout points to this panel with the label 'Endevor (SCM + CI System)'.
- Outline:** A panel below the Endevor panel shows the 'Outline' view for the current program, listing sections like 'INITIAL-PROC', 'READING-PROC', 'PROCESS-PROC', 'INITIALS-PROC', 'LEVELS-PROC', and 'FINALS-PROC'. A callout points to this panel with the label 'Outline'.
- Job Queue:** A panel at the bottom left shows a list of jobs. The 'Job Name' is 'Y08577\*' and the 'User' is 'Y08577'. The list contains 11 jobs with various job IDs and RC values. A callout points to this panel with the label 'Job Queue'.
- Remote Compiler Messages:** A panel at the bottom right shows the output of the remote compiler. It displays '1 error, 0 warnings, 1 other' and lists two items: an error 'IGYPS2121-S - 'PRINTRE' was not defined as a data-name. The statement was discarded.' and an info message 'IGYSC3002-I - A severe error was found in the program. The 'OPTIMIZE' compiler option was cancelled.' A callout points to this panel with the label 'Remote Compiler Messages'.