

Module 2: Installation

- ★ Objective

- ★ To learn how to install Eclipse and PTP

- ★ Contents

- ★ System Prerequisites
 - ★ Eclipse Download and Installation
 - ★ PTP Installation from an Update Site
 - ★ Installation Confirmation

About the Tutorial Installation

- ★ The PTP Tutorial will assume you already have Eclipse installed on your laptop. Please use these slides to install Eclipse and PTP on your laptop before attending.
- ★ Note: up-to-date info on installing PTP and its pre-reqs is available from the release notes:
 - ★ http://wiki.eclipse.org/PTP/release_notes/5.0
 - ★ This information may supersede these slides
- ★ Questions? Please ask on the ptp-users mailing list:
<http://dev.eclipse.org/mhonarc/lists/ptp-user/>

System Prerequisites

- ★ Local system (running Eclipse)
 - ★ Linux (just about any version)
 - ★ MacOSX (10.5 Leopard or 10.6 Snow Leopard)
 - ★ Windows (XP on)
- ★ Java: Eclipse requires Sun or IBM Java
 - ★ Only need Java runtime environment (JRE)
 - ★ Java 1.5 or higher
 - ★ Java 1.5 is the same as JRE 5.0
 - ★ Note: The GNU Java Compiler (GCJ), which comes standard on Linux, will not work!
 - ★ Note 2: OpenJDK, distributed with some linux distributions, has not been tested with Eclipse.
 - ★ See <http://wiki.eclipse.org/PTP/installjava>

Eclipse Packages

- ✦ Eclipse is available in a number of different packages for different kinds of development
 - ✦ <http://eclipse.org/downloads>
 - ✦ This is Eclipse 3.7, also known as "Indigo"
- ✦ With Indigo, there is a new package directly relevant for HPC:
 - ✦ **Eclipse IDE for Parallel Application Developers**
 - ✦ Base Eclipse distribution plus
 - ✦ C/C++ Dev Tools (CDT)
 - ✦ Parallel Tools Platform (PTP)
 - ✦ Fortran Dev Tools (Photran)
 - ✦ Linux Tools
 - ✦ ...
 - ✦ Recommended



Eclipse Installation

- ✦ Download the appropriate package
- ✦ If your machine is Linux or Mac OS X, untar the file
 - ✦ On Mac OS X you can just double-click in the Finder
- ✦ If your machine is Windows, unzip the file
- ✦ This creates an **eclipse** folder containing the executable as well as other support files and folders



Starting Eclipse

★ Linux

- ★ From a terminal window, enter
" <eclipse_installation_path>/eclipse/eclipse &"

★ Mac OS X

- ★ From finder, open the **eclipse** folder where you installed
- ★ Double-click on the **Eclipse** application
- ★ Or from a terminal window

★ Windows

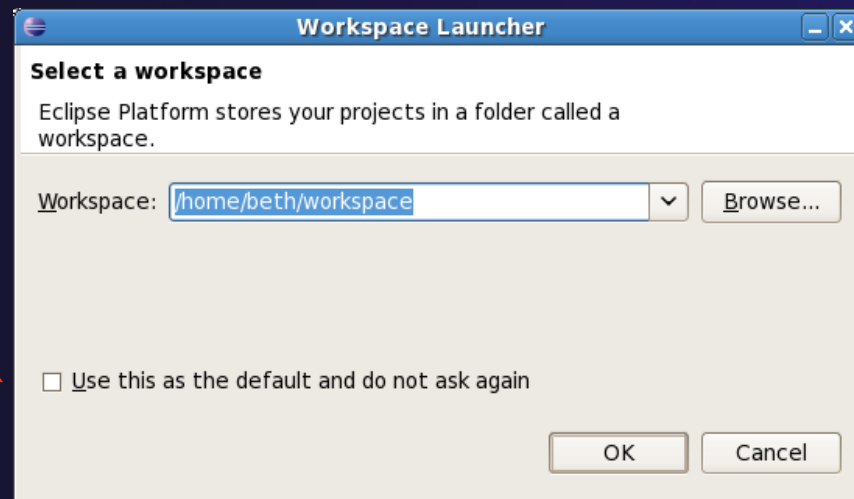
- ★ Open the **eclipse** folder
- ★ Double-click on the **eclipse** executable



Specifying A Workspace

- ✦ Eclipse prompts for a workspace location at startup time
- ✦ The workspace contains all user-defined data
 - ✦ Projects and resources such as folders and files

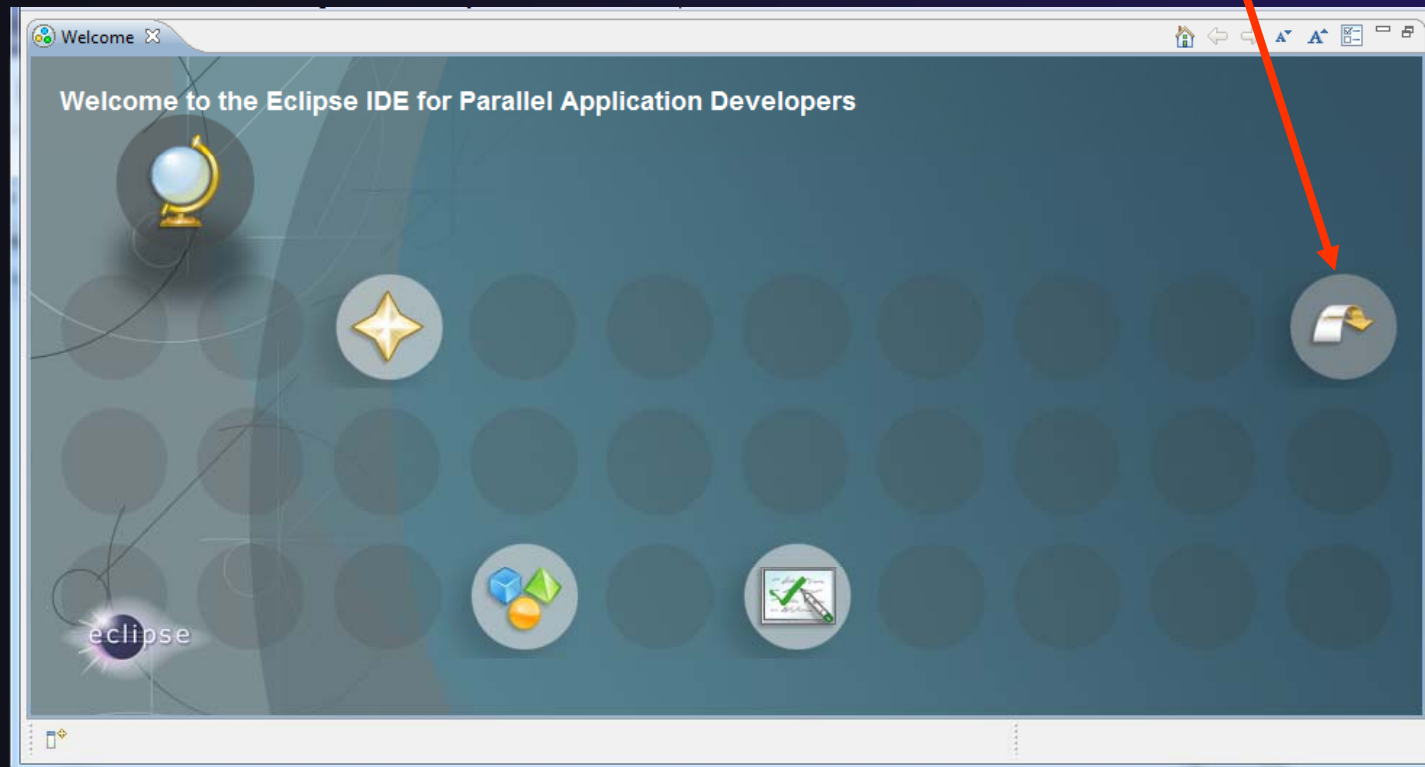
The prompt can be turned off



Eclipse Welcome Page



- ★ Displayed when Eclipse is run for the first time
- Select "Go to the workbench"



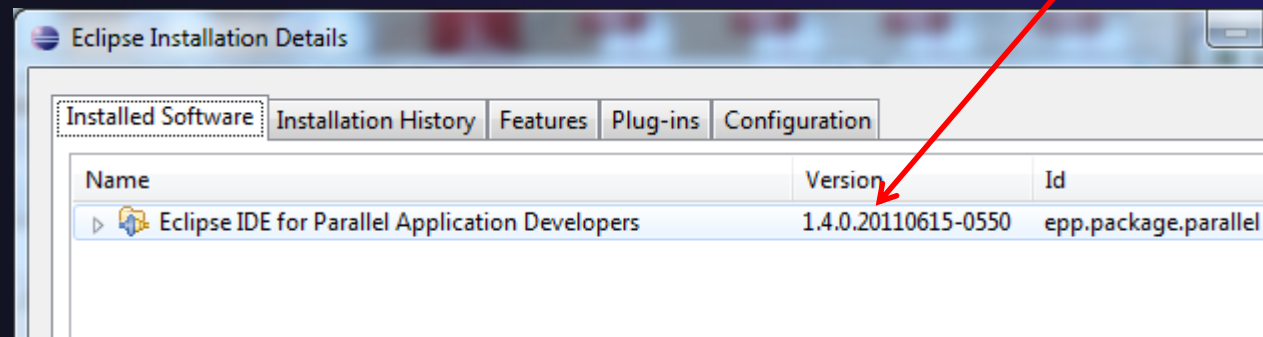
Eclipse
Parallel
App



Check Installation Details

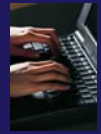
- ★ To confirm you have installed OK
 - ★ Mac: **Eclipse>About Eclipse**
 - ★ Others: **Help>About**
- ★ Choose **Installation Details**
- ★ Confirm you have the following installed software

Differs depending on base download



Checking for PTP Updates

- ★ From time-to-time there may be newer PTP releases than the Indigo release
 - ★ Indigo updates are released only in Sept and February
- ★ PTP maintains its own update site with the most recent release
 - ★ Bug fix releases can be more frequent than Indigo'
- ★ You must enable the PTP-specific update site before the updates will be found



Updating PTP

★ Enable PTP-specific update site

★ **Help>Install new software**

★ Click **Available Software Sites** link

★ Enable/Check the PTP site:

<http://download.eclipse.org/tools/ptp/updates/indigo>

★ (should be enabled by default)

★ Choose **OK**

★ First update:

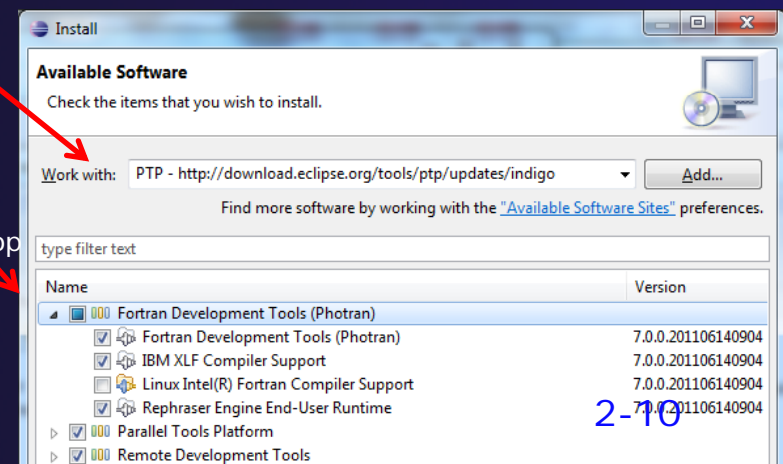
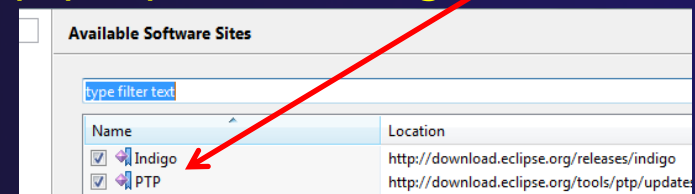
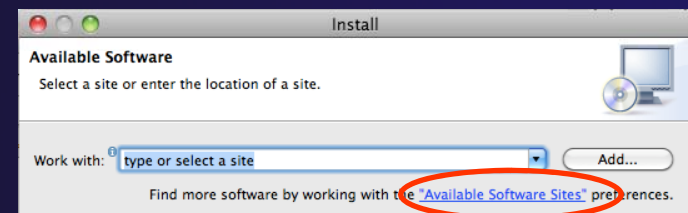
★ Choose PTP Indigo update site

★ Select all PTP components

★ Except Linux Intel Fortran

★ Unless you are running Linux on your laptop

★ Choose **Next, Next**



Updating PTP

- ★ Accept Terms of License agreement, **Finish**
 - ★ Allow workbench to restart like normal installation.
 - ★ Note: this explicitly adds PTP, RDT, Photran components (check "Help>About Eclipse>Installation Details" if you are curious), which enables updates for PTP, RDT, Photran.
- ★ Subsequent updates:
 - ★ Select **Help>Check for updates**
 - ★ Follow prompts like a normal installation

