

Introducing a new modeling tool into a large government administration

Jan Widegren

Swedish Tax Agency

Some facts about the Swedish Tax Agency

Our vision: "A society in which everyone is willing to pay their fair share"

Key processes: Civil registration of private individuals and Tax collection

Number of employees:

Total: 11 000

IT-department: 800 (and 250 consultants)

Turnover:

Total: 1 billion US\$

IT-department: 180 million US\$

IT-systems in production:150

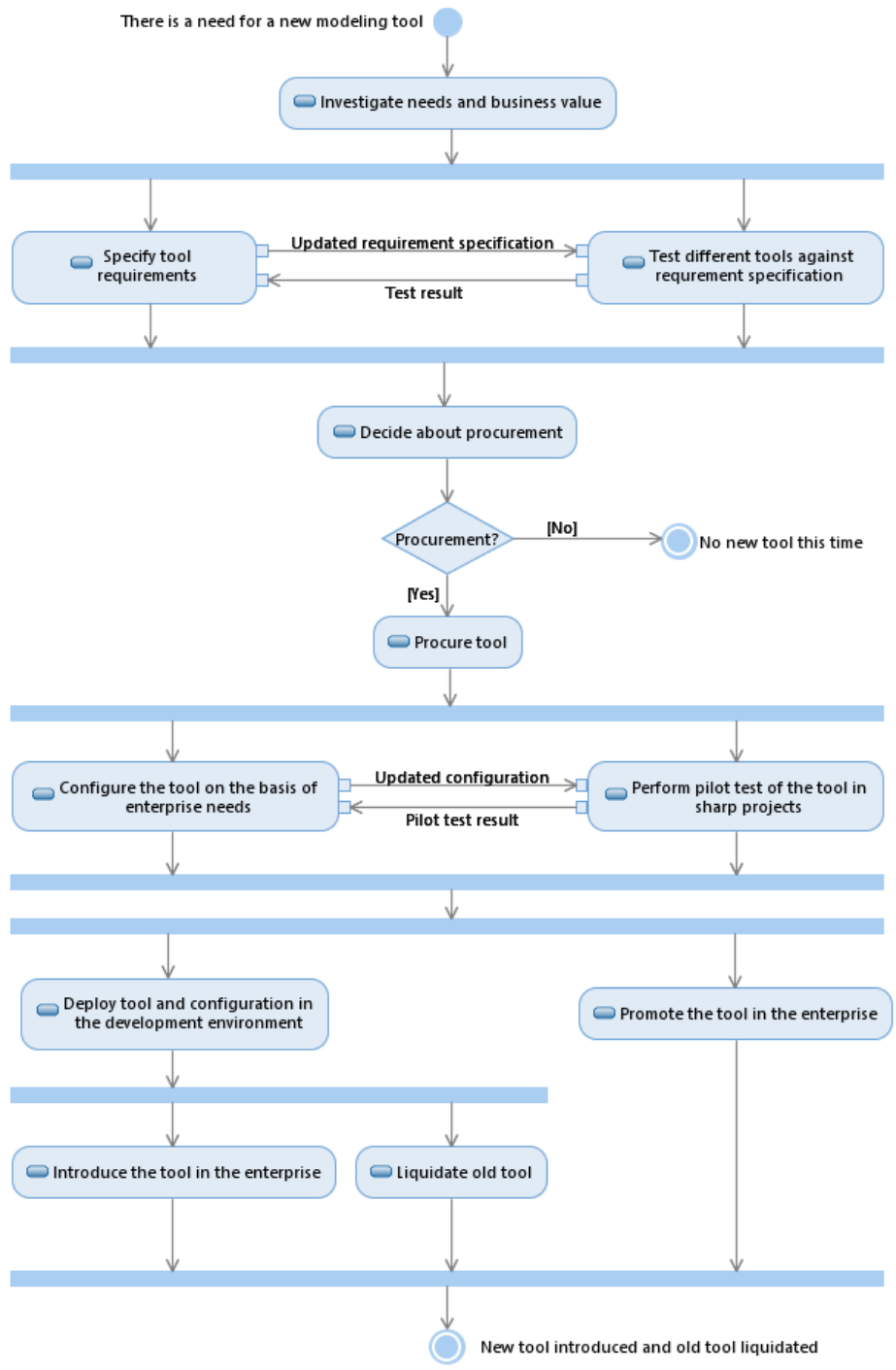
Ongoing system development projects: 40

Users of Rational Software Architect: 250

Distributed system development in six locations in Sweden

A large and complex organization needs a well-documented and maintainable architecture

You need good tools to handle this!



The difficult part: Introducing agile modeling with RSA

Make sure the tool fits into, i.e. supports, the system development process

Our goal is to have a development process that is (truly) agile and architecture-driven

Keep the configuration small and tidy - "less is more"

The configuration should be maintainable!

Give active "on-site"-support to development teams and users

Promote minimalistic modeling - maintainability and readability creates real value

Make the shift from old tool to new tool a smooth one

Help each team out with the migration of their models

Harvest good examples from teams - make them reusable - reuse in other teams

Learn from others - how do other organizations use modeling tools?

The goal is to encourage architecture-driven software development

A good tool is a necessary but (unfortunately) not a sufficient condition for this!

Lessons learned

Success factor #1: Assign the right people to do the job - all the way

Leading roles: use your own staff

Agile modeling tool experts: hire the best consultants - a good investment

Getting people to use the tool as part of their daily work is not easy

Agile modeling cannot be ordered - show the users how to model by actively taking part in their work

Remember: The tool is not a "Silver Bullet"