



DEV2QA

**PDT
2.0**

**Feature Name: Include Path and Build Path
Module name : IncludePathProperties**

Writer	Date	Comment	Approved
Eden Klein	6/15/2008	1. Dev2QA	
		2. Target Version – PDT 2.0	

[1. Introduction.....2](#)

[1.1 Requirement Rationale.....2](#)

[1.2 New Terminology2](#)

[1.2.1 Include path.....2](#)

[1.2.2 Build Path.....2](#)

[1.3 Detailed Description.....2](#)

[1.3.1 Build Path property page2](#)

[1.3.2 Include Path property page.....3](#)

[2. Testing Highlights.....7](#)

[3. Unit Testing.....7](#)

[4. Future Development.....7](#)

1. Introduction

1.1 Requirement Rationale

Application runtime execution path is very much dependent on the file system configuration and include path directive in the php.ini file on the server. Until now, the include path was the same as the build path (which is basically what happens in PDT 1.0) – the problem is it is not accurate enough. This feature is about enabling the user to specify the resources/libraries/projects that should be included in the Build path and their order.

1.2 New Terminology

1.2.1 Include path

You can learn about the Include path here:

<http://il.php.net/manual/en/function.include.php>

In general the include path defines the path where the PHP engine will look for when encountering an include("file") or require("file") statement.

1.2.2 Build Path

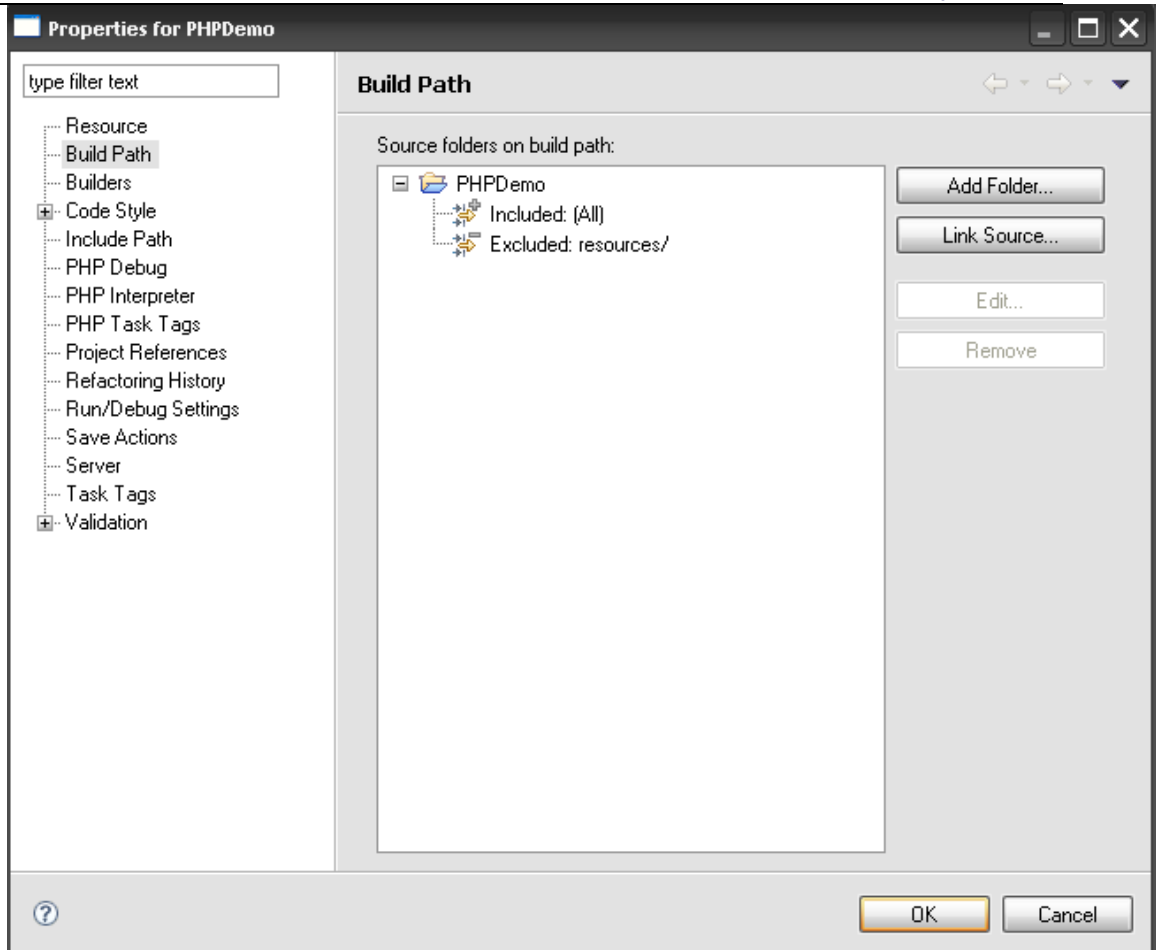
The build path is an eclipse concept. It includes all of the resources that will be part of the build process.

1.3 Detailed Description

There are two separate property pages: one for the build path and one for the include path. They are both project specific. As a default, the project itself is associated to both the include path and the include path upon creation.

1.3.1 Build Path property page

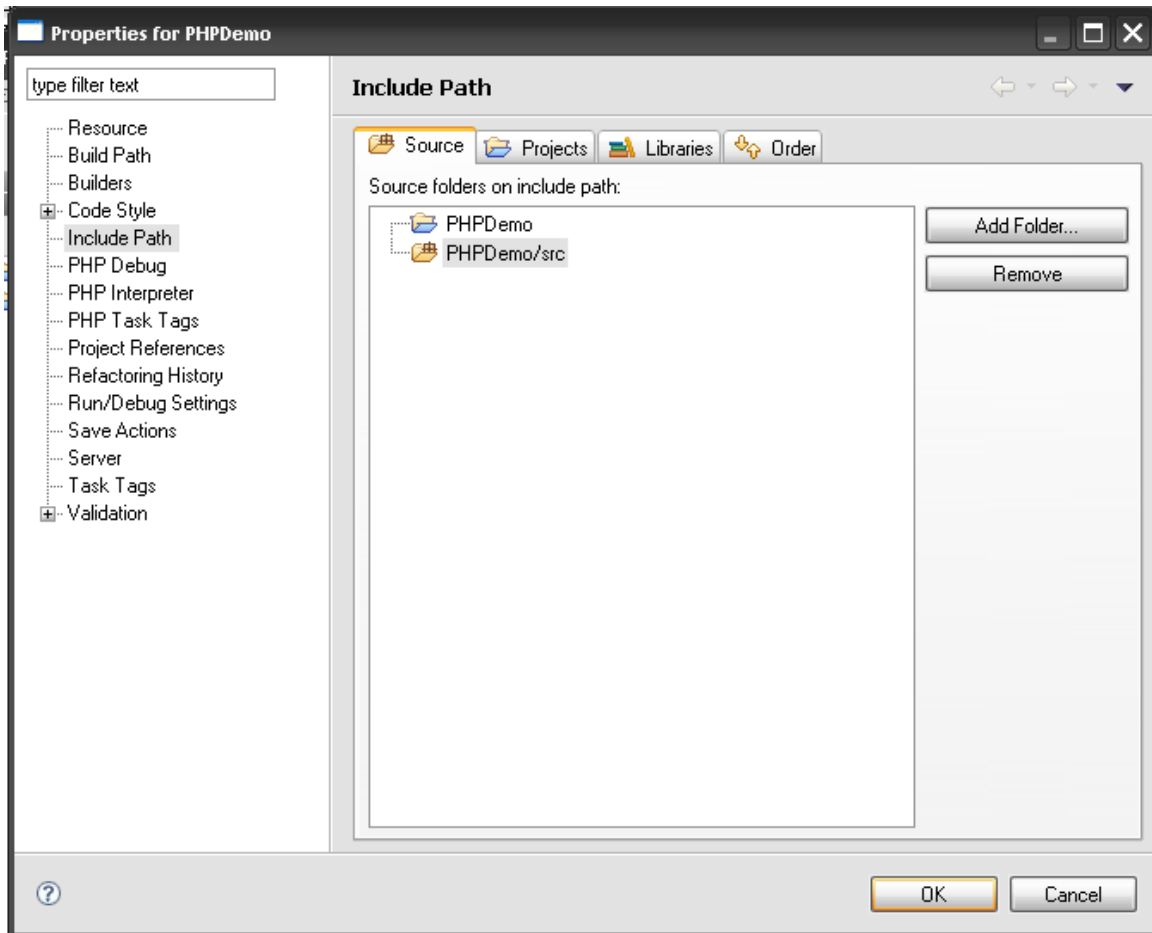
The Build Path property page allows the user to add Sources to the build path. Unlike the dlTK concept, the user should not be able to add anything other than sources through this page. This page can be reached by right clicking on the project and following the "Build path->Configure build path" menu or "properties->build path" menu. In the first option, the "Add libraries" sub menu should not appear, since, as mentioned, there is no way of adding libraries through this page.



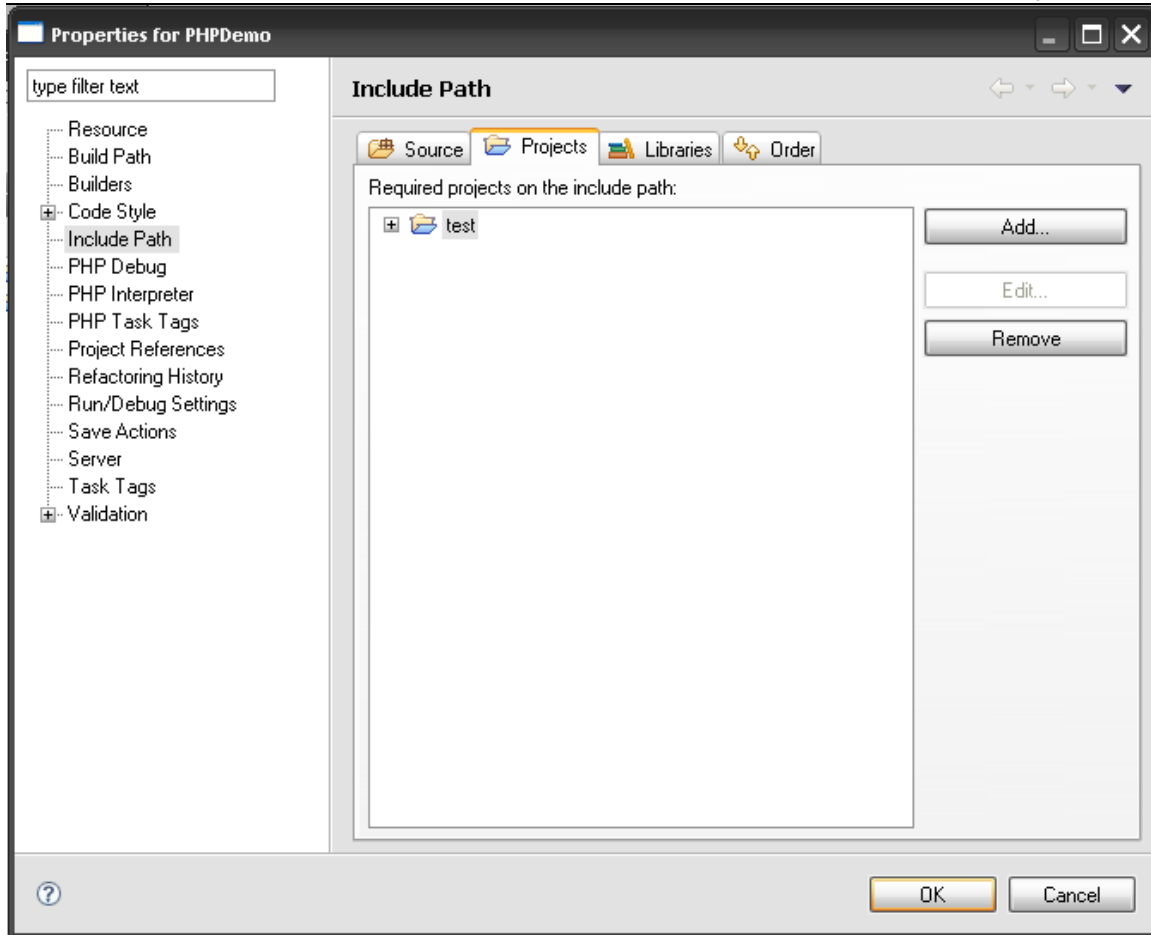
1.3.2 Include Path property page

The Include path property page allows the user to add Sources, libraries and projects to the project include path. In addition the user can set the order between the added elements.

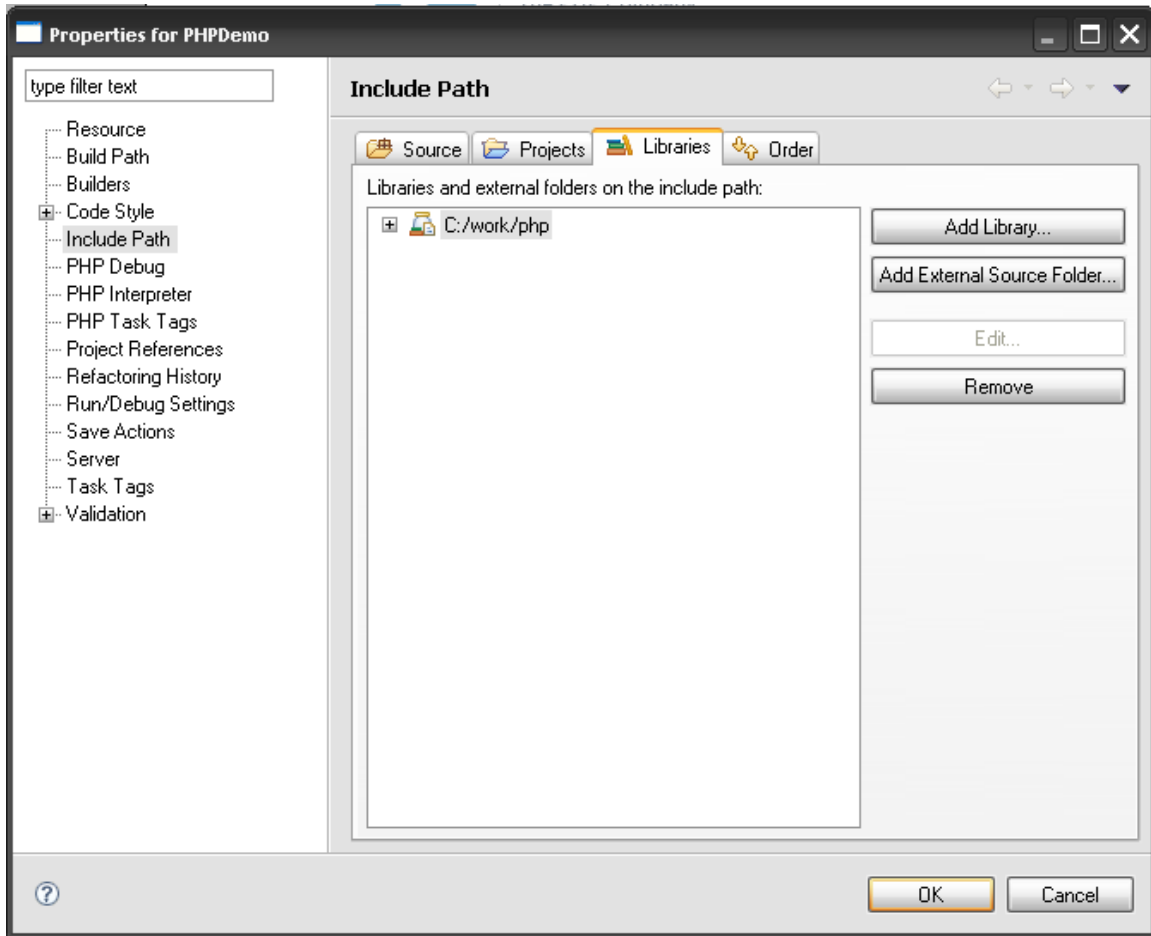
Source tab



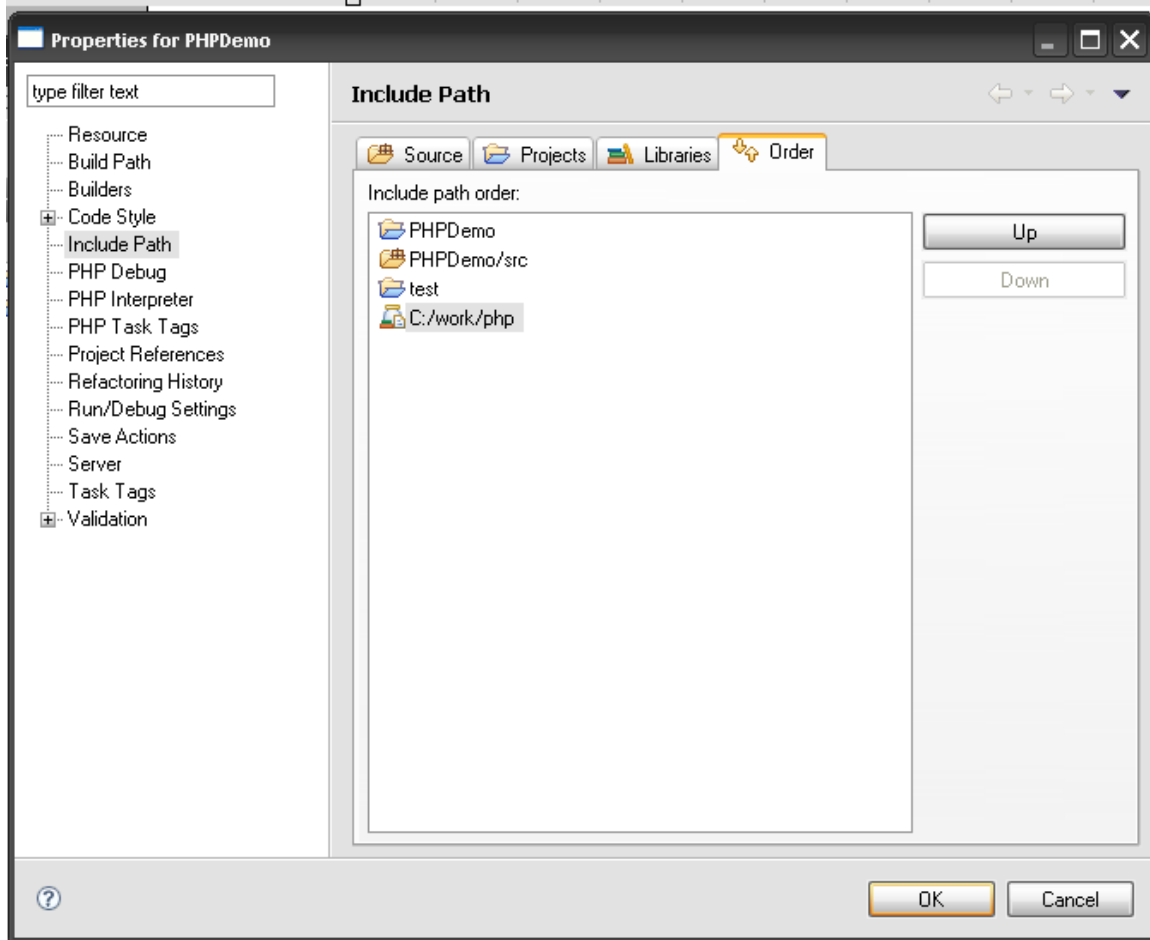
Projects Tab



Libraries tab



Order Tab



2. Testing Highlights

- Make sure that, for each tab in the include path property page, only the buttons displayed in the screenshot above appear.
- Make sure that the order chosen by the user is saved on ok. (try to reopen the tab and see if it didn't change)
- Make sure that all of the elements added are indeed part of the include path once the user clicked on "ok". The elements need to show in the property page when opened and of course they need to affect the include and require statements in the code.

3. Unit Testing

None.

4. Future Development

- Add the new include path page to the New Wizard project



- In the Source tab of the Include path page, the user has the option to add more Sources by clicking on the "Add folder" button. Right now the dialog that is presented to the user displays the project tree. In the future we may want to consider displaying the build path entries and not the project tree. The reason for that would be that the sources choose for the include path should pass the building process. An exception to that would be the option to "Read/open" files. In this case the files should be part of the include path but not necessarily part of the build path.