



Oscar Slotosch, Validas AG

Tool Qualification By Need

Content



- ▶ **Eclipse Tool Qualification Roadmap 2012**
- ▶ Tool Qualification By Need
 - Standard Needs
 - Tool Needs
 - Qualification Tools
- ▶ Summary

Eclipse Roadmap to Tool Qualification



[wiki.eclipse.org/Auto IWG WP5](http://wiki.eclipse.org/Auto_IWG_WP5)

1. **Goals: satisfy DO-330 (TQL 1-5)**
2. **Concept: model-based tool qualification**
3. **EMF Tool Qualification Model (TQL 1-5)**
4. **Demonstrate & implement with an Eclipse Project: QPP (Qualifiable Plugin Projects)**
5. **Qualify (selected) plugins**



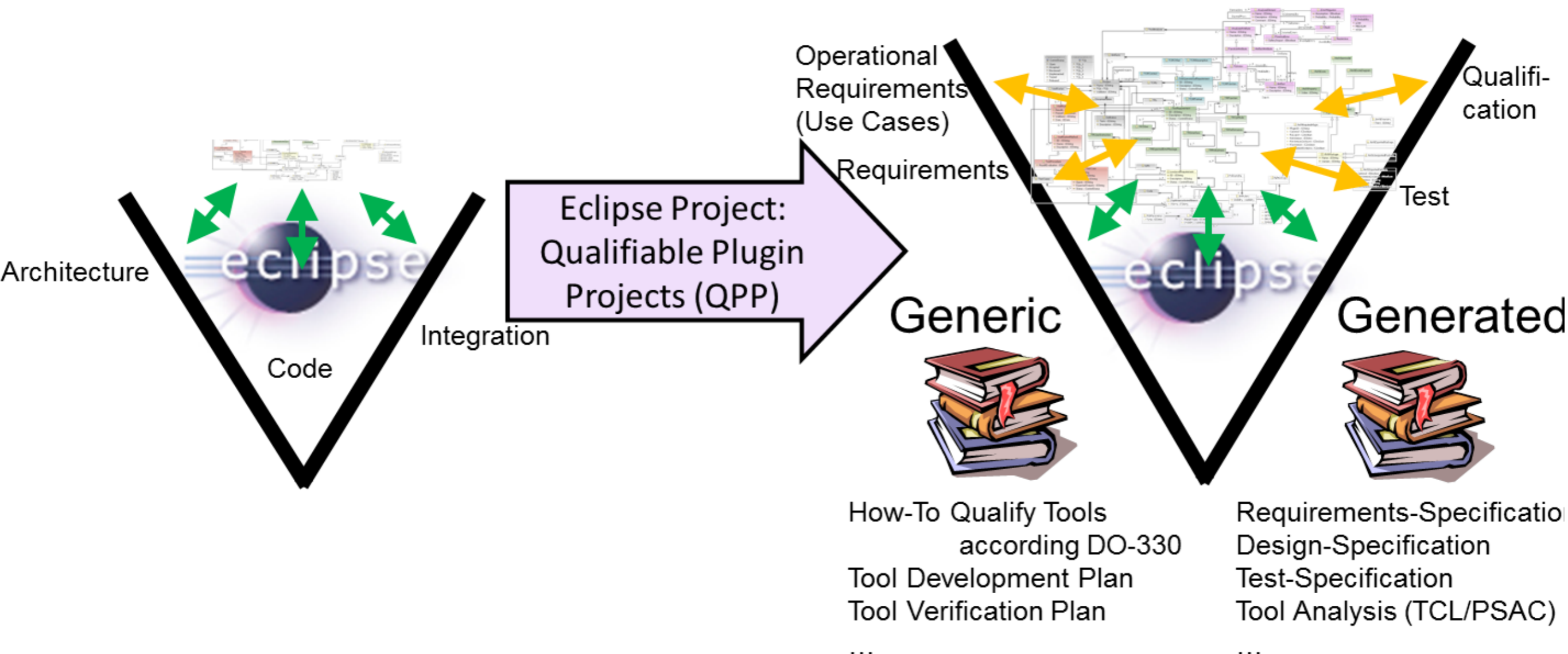
Tool Qualification Model for Eclipse



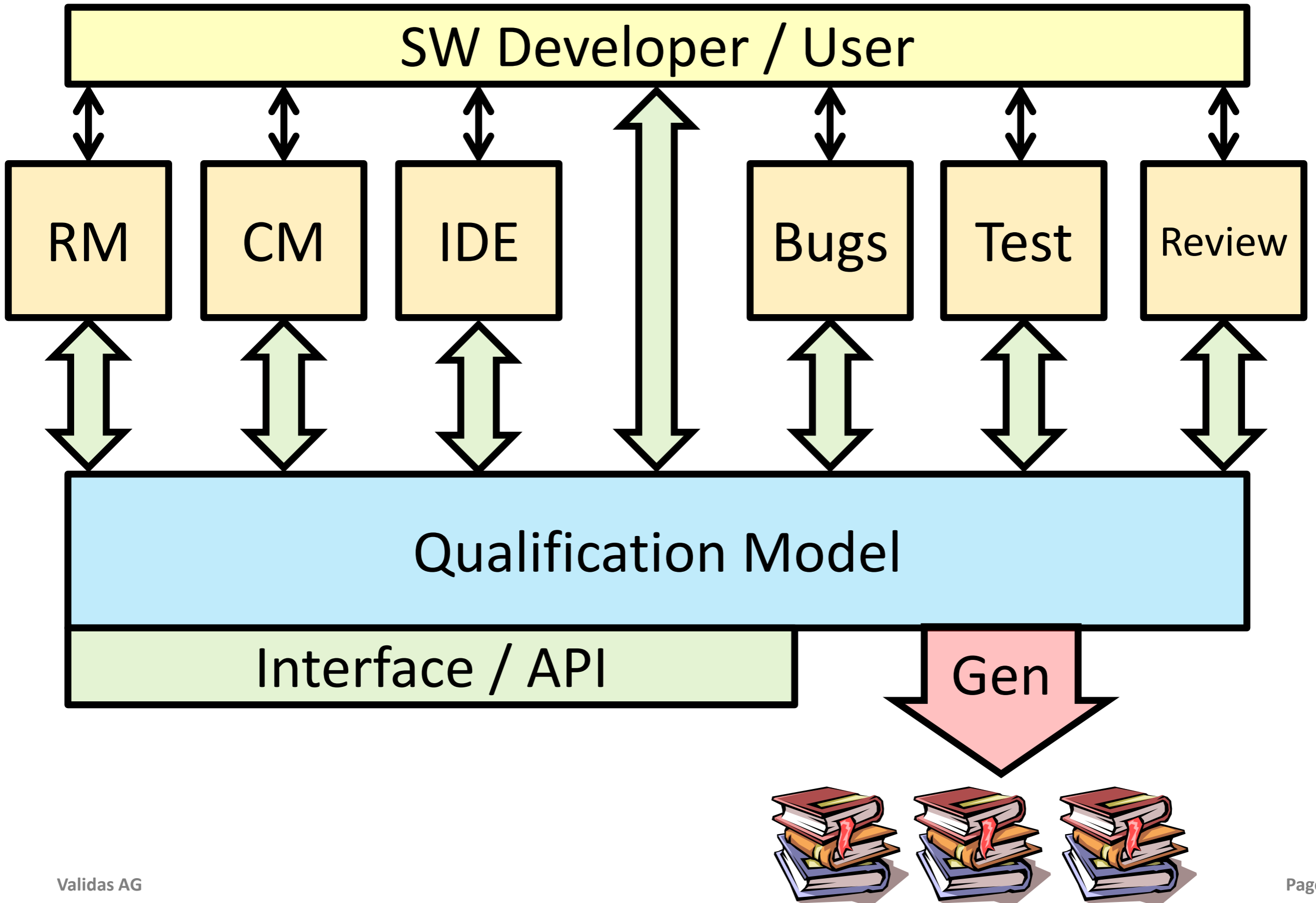
- ▶ Currently Eclipse does not support qualification
- ▶ Extended meta-model (and documentation) covers 100% (~ 450 Requirements) of DO-330

Current Metamodel

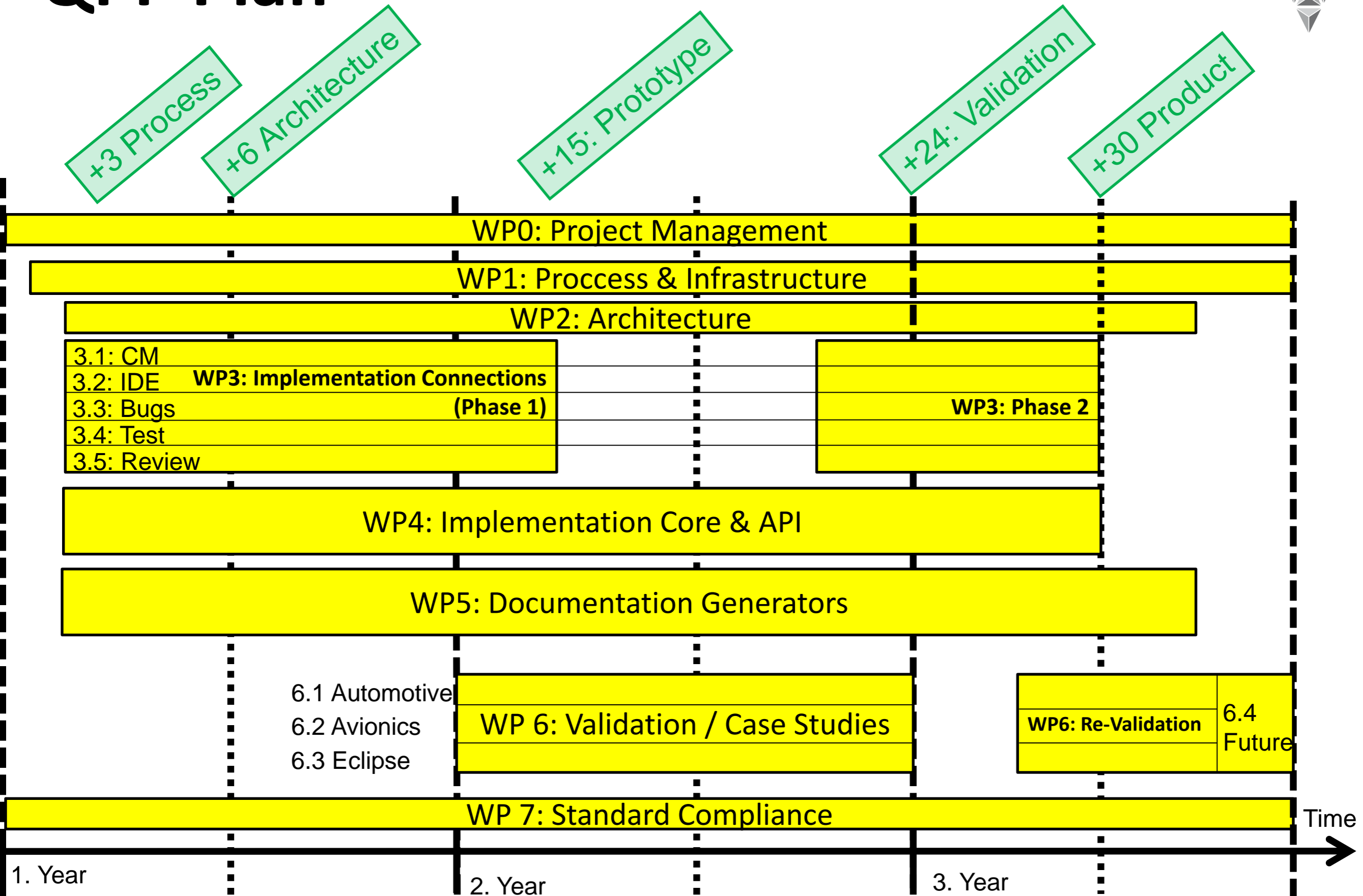
New Extended Metamodel



QPP Architecture



QPP Plan



1. Year

2. Year

3. Year

Time

Roadmap Vision 2012

- ▶ Highway for TQL-1 with 5 lines
- ▶ High invest for Eclipse tooling and research?
- ▶ Do we need big highways to get to nice places?



Still a future option for those requiring a highway (and still in business discussions)

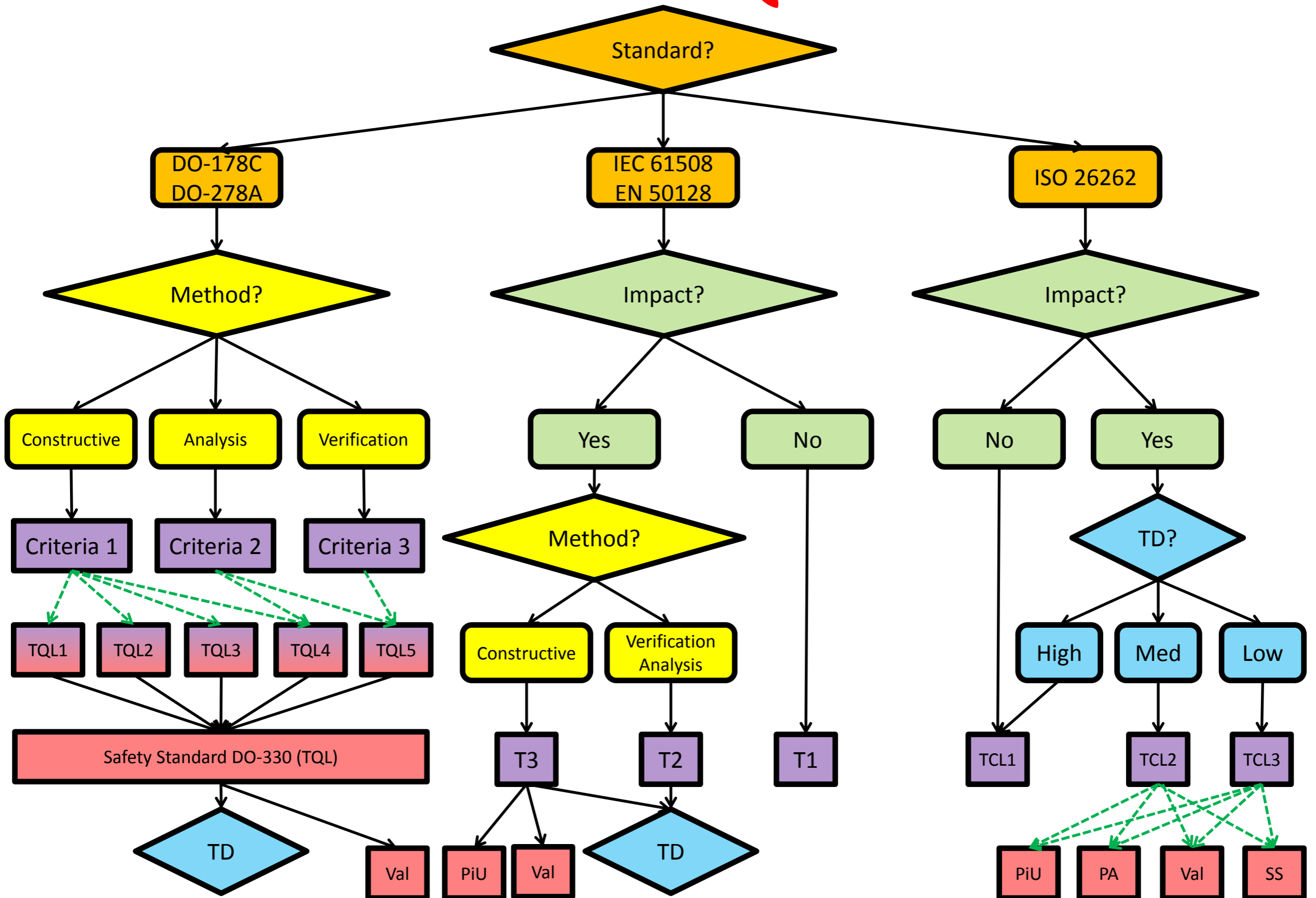


Content



- ▶ Eclipse Tool Qualification Roadmap 2012
- ▶ **Tool Qualification By Need**
 - **Standard Needs**
 - Tool Needs
 - Qualification Tools
- ▶ Summary

Tool Classification & Qualification

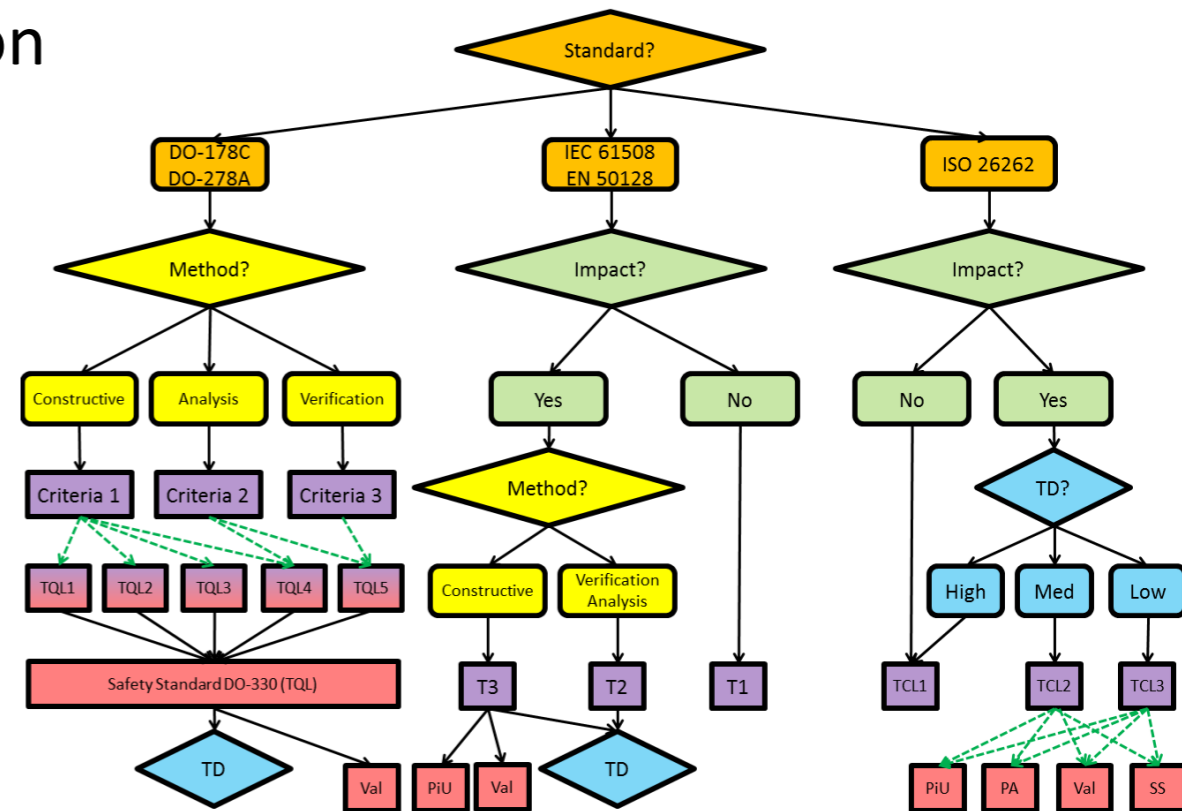


The verification objectives of the tool operational verification and validation process consist of the detection and reporting of errors that may have been introduced during the tool development processes.

Standard Needs



- ▶ Eclipse highway satisfies relevant standards
- ▶ It includes
 - DO-330 compliance
 - Potential tool error analysis & detection
 - Validation
- ▶ TQL 1 is only needed in avionics for constructive tools without output verification
- ▶ TQL 2-4 is cheaper
- ▶ For TQL 5 Validas has tool support
 - No need to invest in infrastructure
 - Pay only per creation of qualification kit
- ▶ We can start with Validas tools (TQL-5) and
- ▶ build the Eclipse highway (TQL-1) line by line when needed

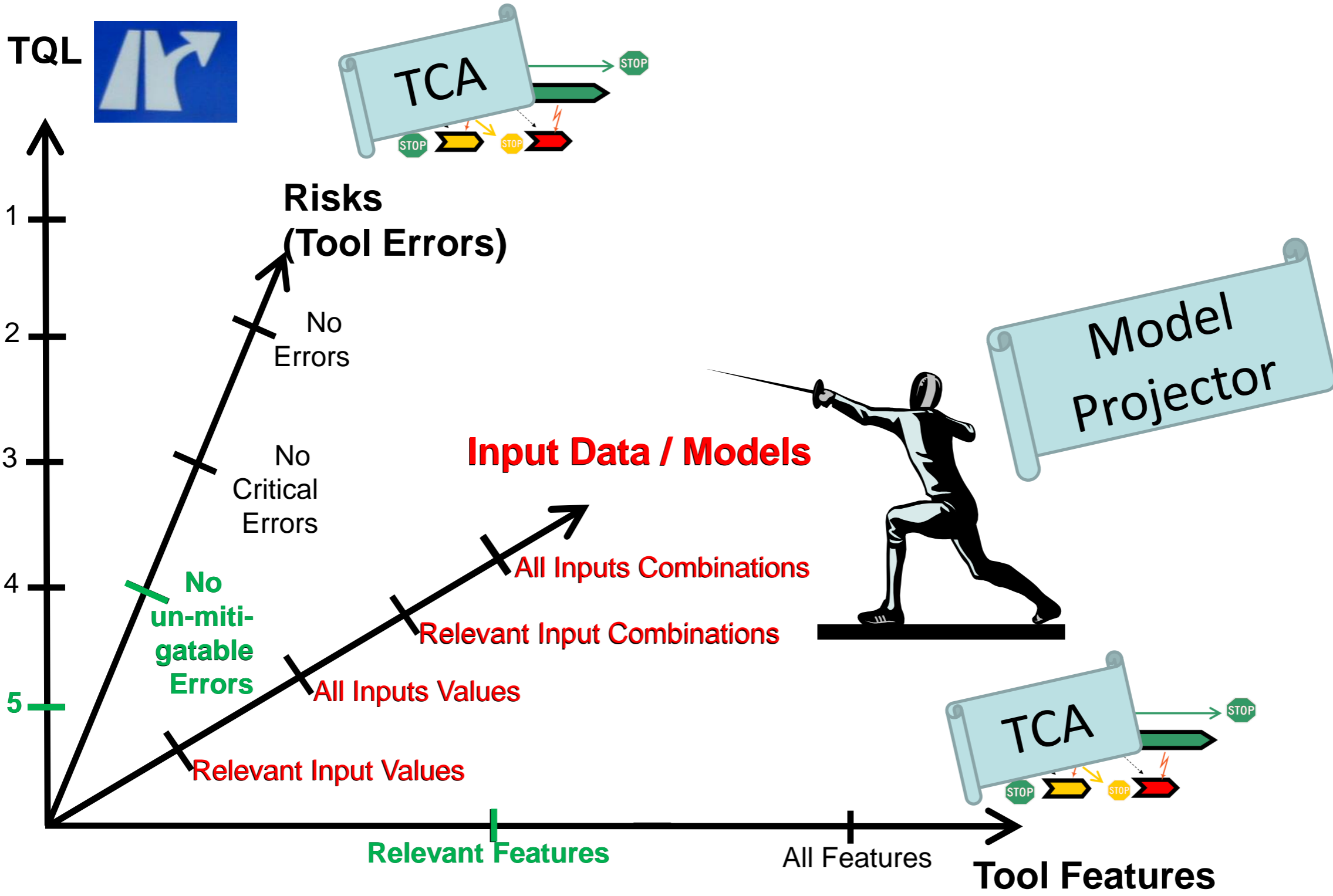


Content



- ▶ Eclipse Tool Qualification Roadmap 2012
- ▶ Tool Qualification By Need
 - Standard Needs
 - **Tool Qualification Needs**
 - Qualification Tools
- ▶ Summary

Minimizing Tool Qualification Needs



Model Projection



- ▶ “Model Projection” shows the content of all selected (and contained) elements

Modeling Tool

Projection View

The screenshot displays the Validas Tool Chain Analyzer 1.8.2 DEV interface. The left pane, labeled 'Modeling Tool', shows a 'Resource Set' for 'file:/C:/Users/slotosch/Desktop/QKiProcess.tca'. It contains a tree view with the following elements:

- Tool Chain ToolName (TCL1)
 - Tool AnyTool (TCL1)
 - Qualification Project Qualification Kit Application
 - Use Case AnyTool:Example UseCase (TCL1)
 - Feature AnyTool:F1
 - Tool Qualification Kit
 - Qualification Project Qualification Kit Construction
 - Qualification Role Beta User
 - Qualification Role Qualification Expert
 - Qualification Role Safety Expert
 - Qualification Role Tool Developer
 - Qualification Role Tool Tester
 - Qualification Role Tool User
 - Qualification Step 1 : Process Model
 - Qualification Step 2 : Analysis Model
 - Qualification Step 3 : Test Model
 - Qualification Step 4 : Test Automation Unit
 - Qualification Step 5 : Qualification Kit

The right pane, labeled 'Projection View', shows the 'Projected element: ToolChain'. The 'Projection:' view displays the following structure:

- Projection of ToolChain : ToolName (46)
 - 1 Packages of ToolChain : ToolName (46)
 - 7 Classes of ToolChain : ToolName (46)
 - Feature (1)
 - QualificationProject (2)
 - QualificationRole (6)
 - QualificationStep (33)
 - Tool (2)
 - ToolChain (1)
 - UseCase (1)

Red arrows indicate the following:

- A red arrow points from the 'Modeling Tool' label to the left pane.
- A red arrow points from the 'Projection View' label to the right pane.
- A red arrow points from the 'Projected element(s)' label to the 'Projection of ToolChain : ToolName (46)' element.
- A red arrow points from the 'Classes' label to the 'QualificationProject (2)' element.

Example Projection



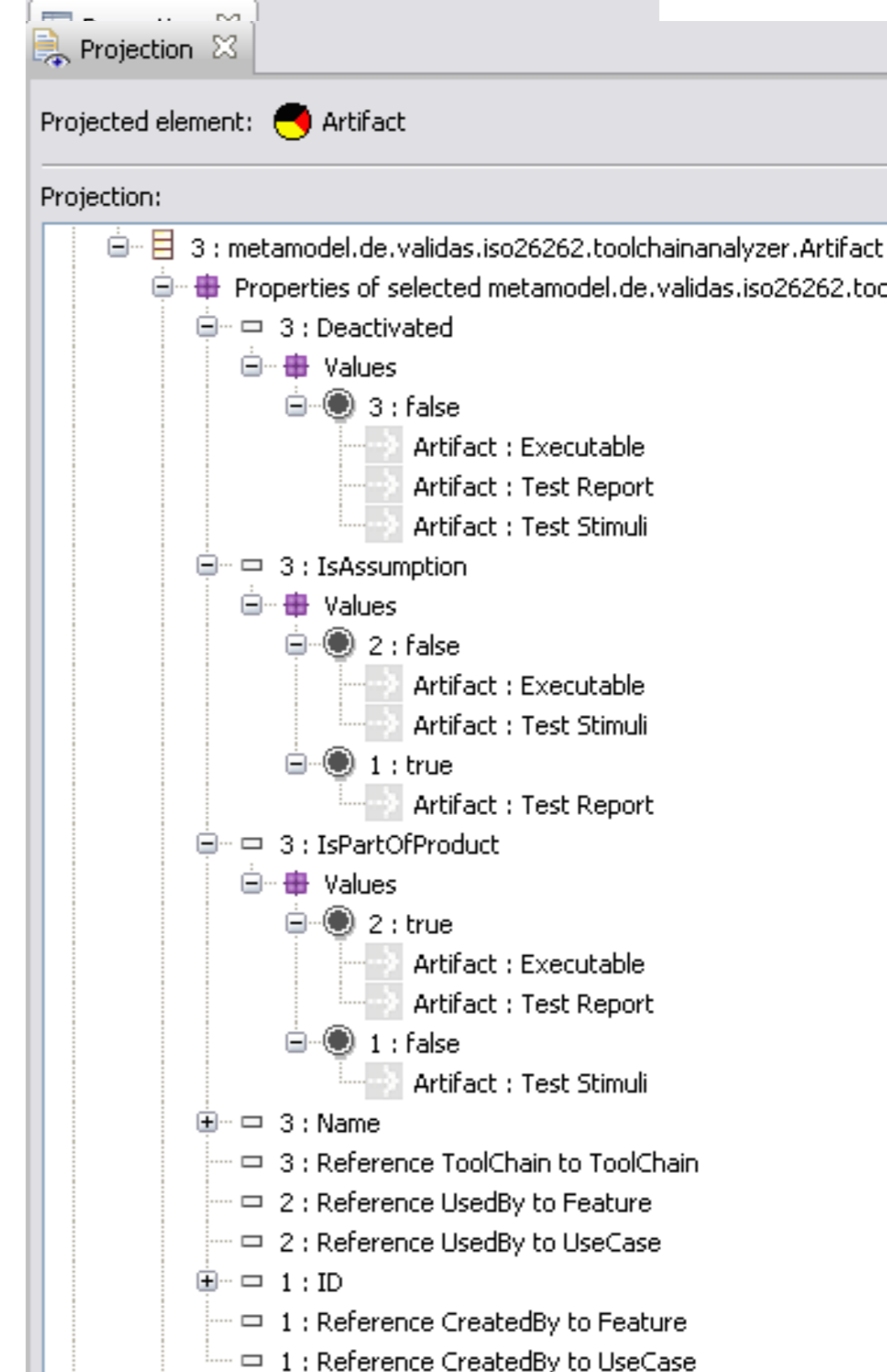
Artifact 1: Executable

| Property | Value |
|---------------------|--------------------------|
| Name | Executable |
| Description | |
| Format | |
| Created By | Use Case Target Compiler |
| Used By | Use Case Debugger:Flast |
| Modified By | |
| Is A | |
| Occurrences | |
| Is Assumption | false |
| Long Description | |
| Created By Tool | |
| Used By Tool | |
| Modified By Tool | |
| Deactivated | false |
| Artifact Attributes | |
| Variant | |
| Comment | |
| Is Part Of Product | true |
| ID | |
| Internal Reference | |

Artifact 2: Test Report

| Property | Value |
|---------------------|------------------------------|
| Name | Test Report |
| Description | |
| Format | |
| Created By | Feature Modeling Tool:Test I |
| Used By | |
| Modified By | |
| Is A | |
| Occurrences | |
| Is Assumption | true |
| Long Description | |
| Created By Tool | |
| Used By Tool | |
| Modified By Tool | |
| Deactivated | false |
| Artifact Attributes | |
| Variant | |
| Comment | |
| Is Part Of Product | true |
| ID | |
| Internal Reference | |

Artifact 3: Test Stimuli



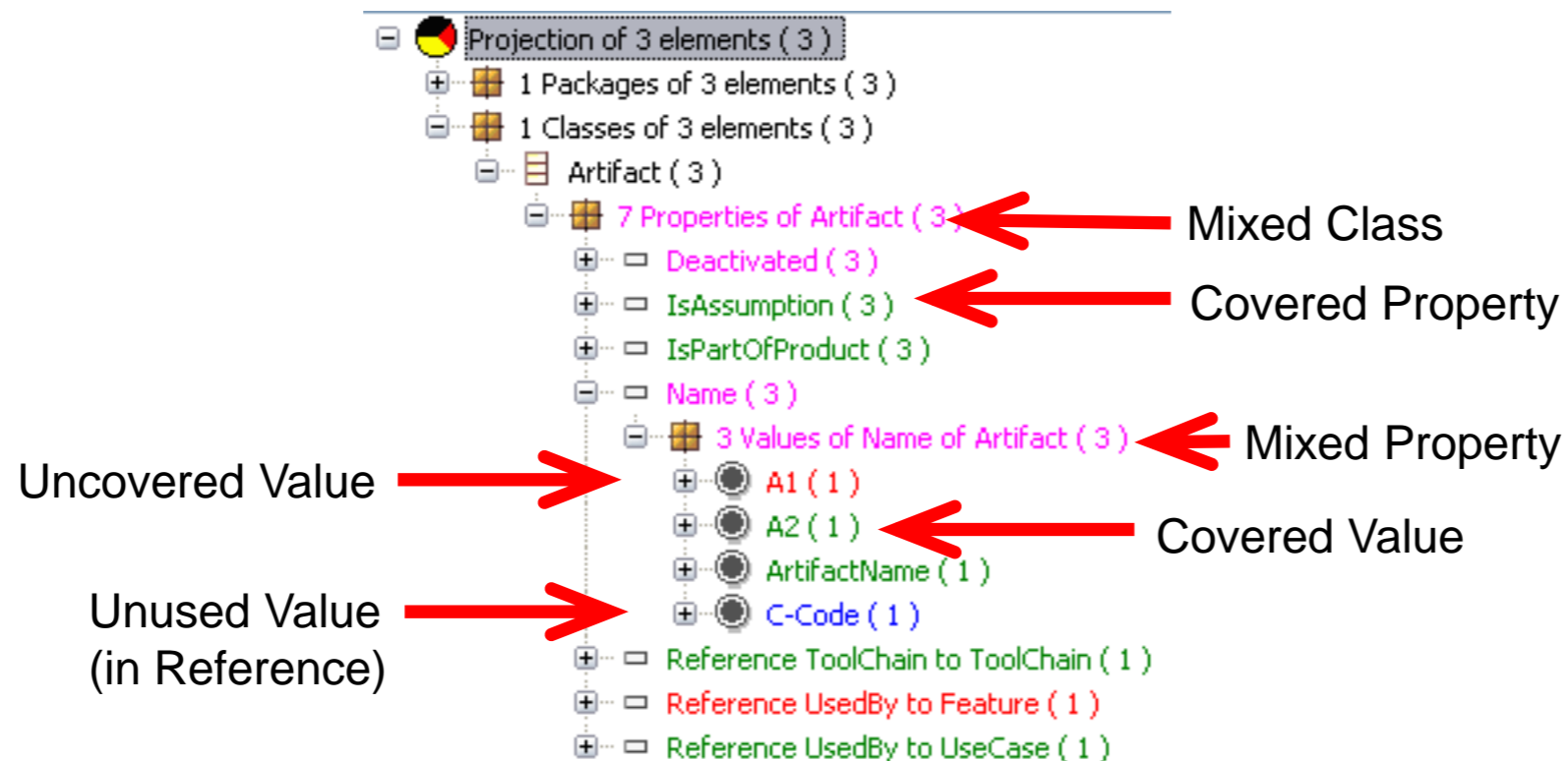
Projection:

Model Projector for Input Data



- ▶ Can be used for every EMF modeling tool
- ▶ Has difference view
- ▶ Allows filtering
- ▶ Allows properties & combinations
- ▶ Works also for big models (AUTOSAR) models

Difference View

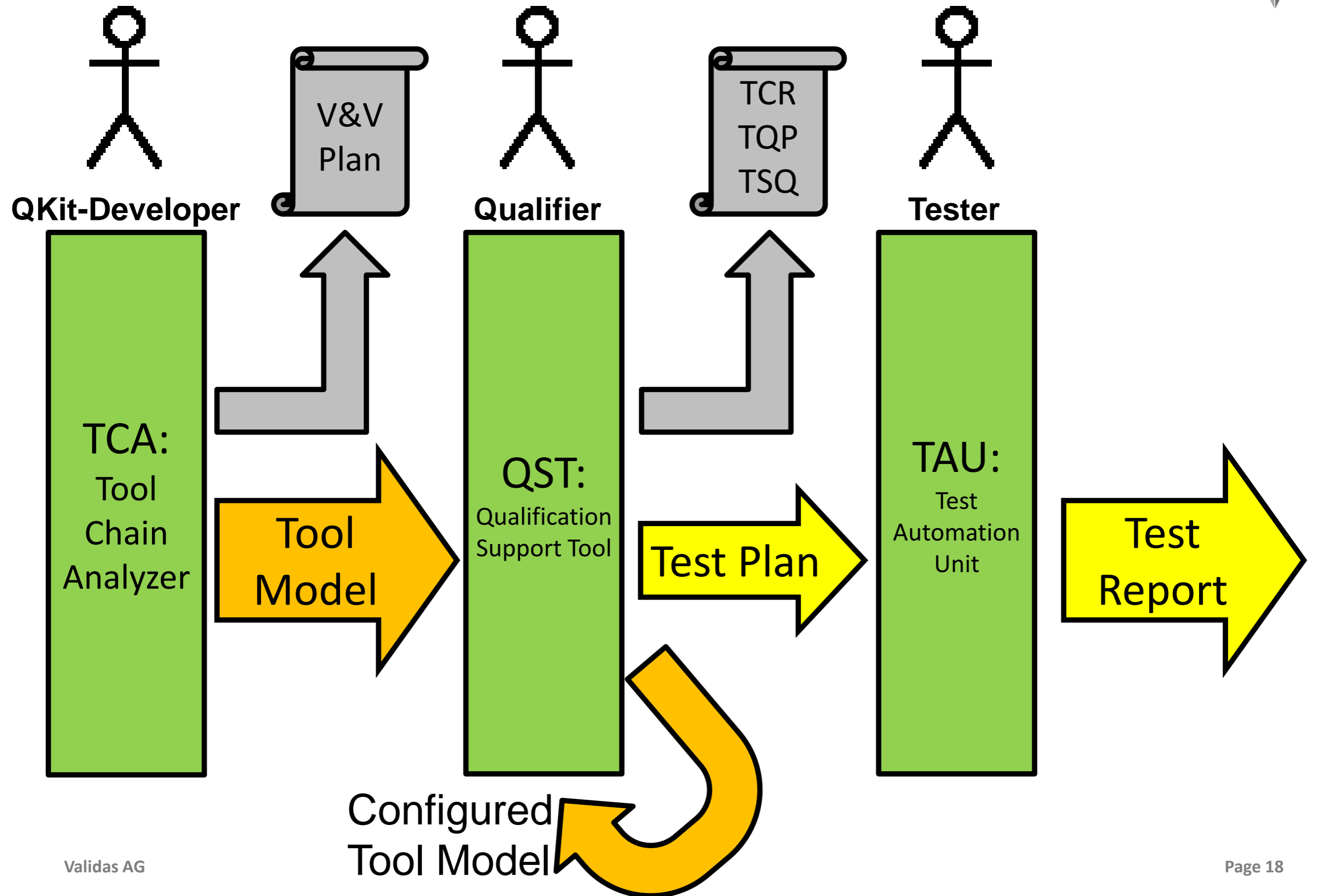


Content



- ▶ Eclipse Tool Qualification Roadmap 2012
- ▶ Tool Qualification By Need
 - Standard Needs
 - Tool Qualification Needs
 - **Qualification Tools**
- ▶ Summary

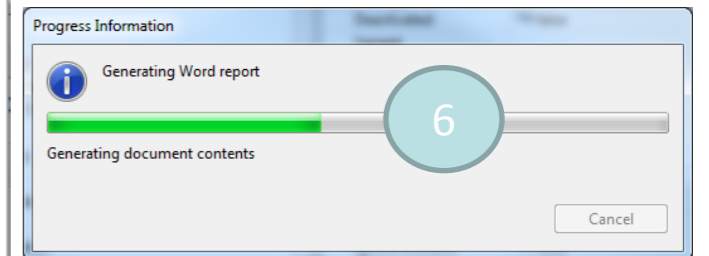
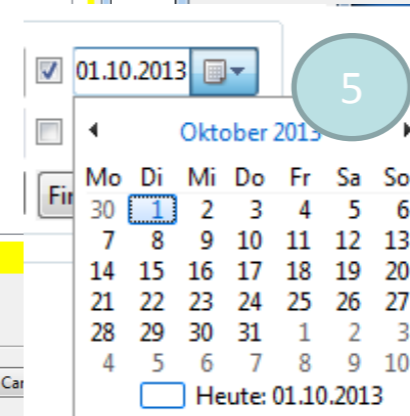
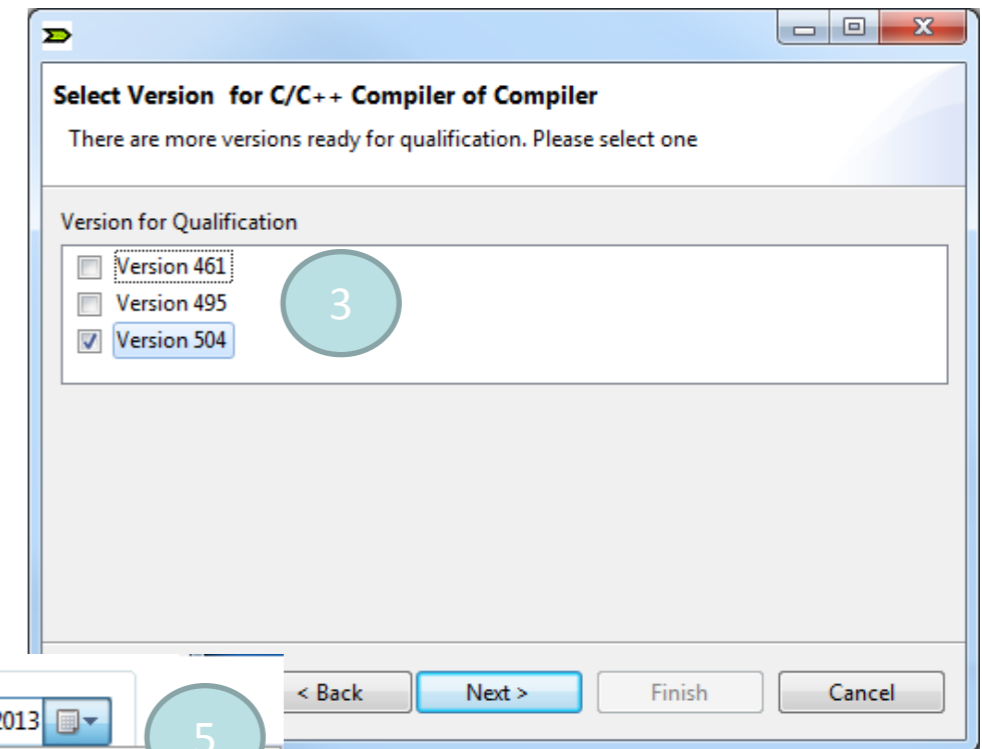
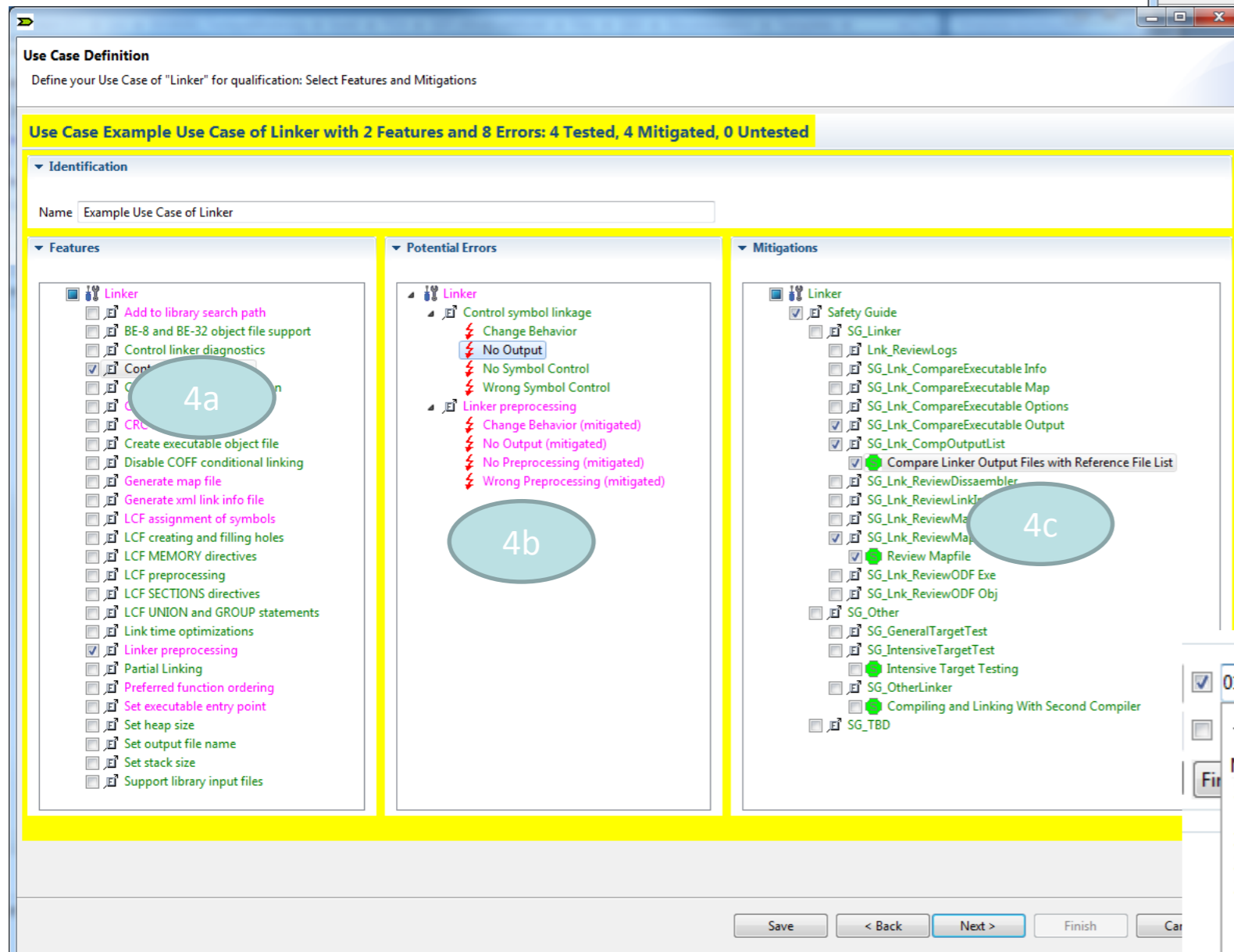
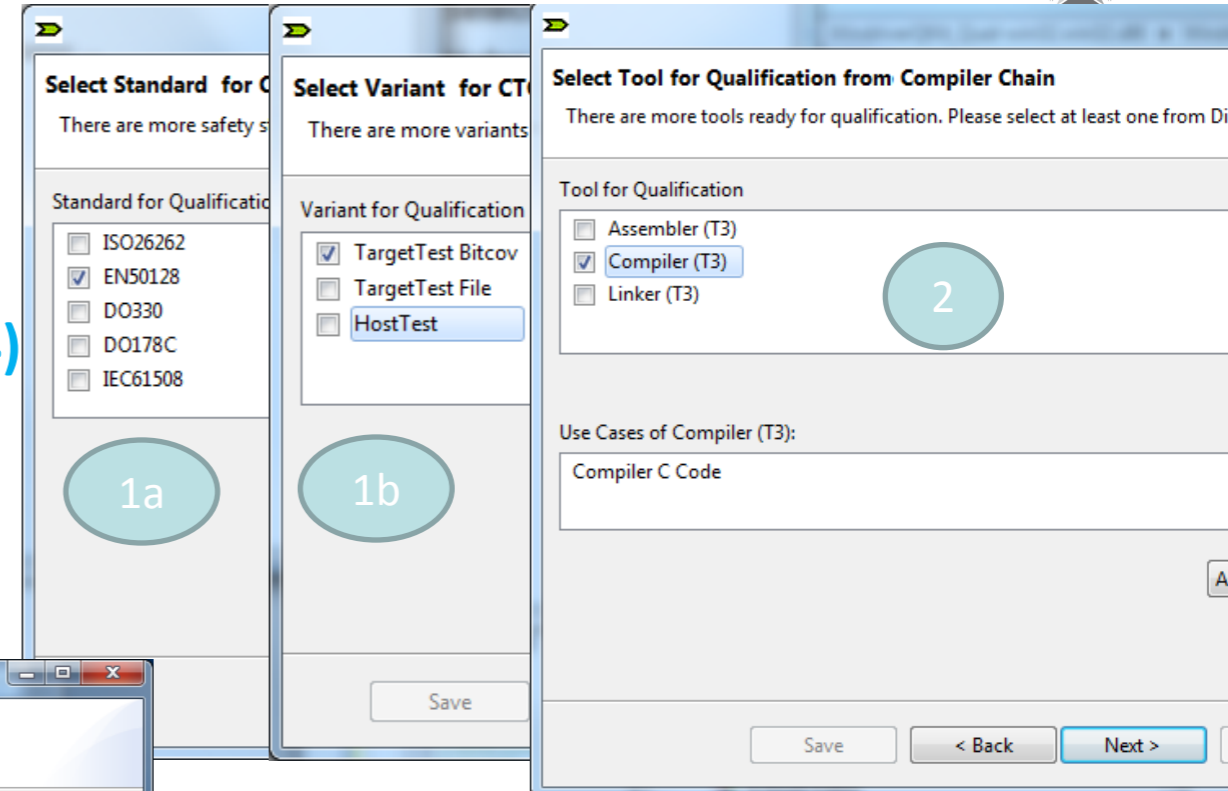
Validas Tools & Generated Artifacts



Qualification Support Tool



- ▶ Guides you through the qualification process
- ▶ Select standards and variants of the tools (1)
- ▶ Helps select tool features (2) & versions (3)
- ▶ Shows mitigations for known & potential errors (4)
- ▶ Supports qualification planning (5)
- ▶ Generates validation test list for TAU
- ▶ Generates documents based on selections (6)



Summary



- ▶ **Eclipse Tool Qualification Roadmap 2012 is a costly TQL-1 highway**

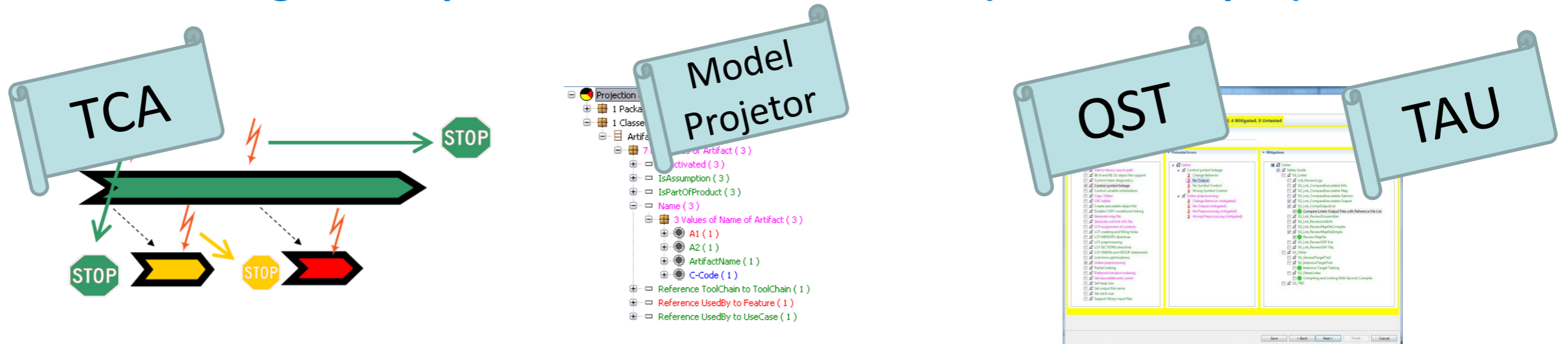


- ▶ **Eclipse Tool Qualification 2013 is no invest TQL-5 path: Ready to use**

- ▶ **Validas can qualify (Eclipse-based) tools for**

- ISO 26262, IEC 61508, EN 50128
- DO-178C, DO-278A, DO-330 (TQL-5)

- ▶ **Validas uses generic qualification model & tools (also for Eclipse)**



Second

Tool Qualification

Symposium



Over 70 participants on
First TQS from 8 countries

► Presentations

- Tool user & tool provider
- Qualification requirements & qualification kits
- Experiences from different domains & different industries
- Practical experiences & practical support
- Tutorials

► Location: Munich City

► Registration: <http://toolqualification2014.eventbrite.com>

► Deadline for presentation submission: 10th November 2013

► Organization: Validas AG, tqs@validas.de

2014: Second TQS
9th – 10th April 2014

New:
– Tool Exhibition
– Call for Presentations
10th November 2013
– Location: Munich City

Thank You!



VALIDAS 

Arnulfstraße 27
80335 München
www.validas.de
info@validas.de