

Write once, **test everywhere?**

Cross platform development and testing with Eclipse

Agenda

- ▶ **Introduction & motivation**
- ▶ **Affected areas**
- ▶ **Differences & varieties**
- ▶ **Conclusions**
- ▶ **Tips & solutions**

Introduction / motivation

- ▶ **Eclipse RCP - a cross-platform platform**
- ▶ **necessitate cross-platform awareness**
 - development
 - testing

Operating System	Version	Hardware	JRE	Windowing System
Windows	7	x86 32-bit	Sun Java 5 Update 14 IBM Java 5 SR6b	Win32
		x86 64-bit		
	Vista	x86 32-bit	Sun Java 5 Update 14 IBM Java 5 SR6b BEA JRockit 27.4.0	
		x86 64-bit	Sun Java 5 Update 14 IBM Java 5 SR6b	
	XP	x86 32-bit	Sun Java 6 Update 3 Sun Java 5 Update 14 Sun Java 1.4.2 Update 16 IBM Java 5 SR6b IBM Java 1.4.2 SR10 BEA JRockit 27.4.0	
		x86 64-bit	Sun Java 5 Update 14 IBM Java 5 SR6b	
Red Hat Enterprise Linux	5.0	x86 32-bit	Sun Java 6 Update 3 Sun Java 5 Update 14 Sun Java 1.4.2 Update 16 IBM Java 5 SR6b IBM Java 1.4.2 SR10 BEA JRockit 27.4.0	GTK
		Power 64-bit	IBM Java 5 SR6b	
	4.0	x86 64-bit	Sun Java 5 Update 14 IBM Java 5 SR6b	
SUSE Linux Enterprise Server	11	x86 32-bit	Sun Java 5 Update 14 IBM Java 5 SR6b	GTK
		x86 64-bit		
		Power 64-bit		
Ubuntu Long Term Support	9.04	x86 32-bit	Sun Java 5 Update 14 IBM Java 5 SR6b	GTK
		x86 64-bit		
Sun Solaris	10	x86 32-bit	Sun Java 5 Update 14	GTK
		SPARC		
HP-UX	11i v2	ia64	HP-UX Java 5 Update 7	Motif 2.1
IBM AIX	5.3	Power	IBM Java 5 SR6b	Motif 2.1
Apple Mac OS X	10.5	Universal	Apple Java 10.5 Update 1	Carbon
		Universal 32-bit		Cocoa
		Universal 64-bit		

(Af/In)-fected Areas

▶ Area 1 - Compiling

JRE – 1.4.2 → 1.6

▶ Area 2 - Deployment

required Plug-ins / Fragments

▶ Area 3 - Startup

Launcher

▶ Area 51 - GUI

underlying Windowing System

Operating System	Version	Hardware	JRE	Windowing System
Windows	7	x86 32-bit	Sun Java 5 Update 14 IBM Java 5 SR6b	Win32
		x86 64-bit		
	Vista	x86 32-bit	Sun Java 5 Update 14 IBM Java 5 SR6b BEA JRockit 27.4.0	
		x86 64-bit	Sun Java 5 Update 14 IBM Java 5 SR6b	
XP	x86 32-bit	Sun Java 6 Update 3 Sun Java 5 Update 14 Sun Java 1.4.2 Update 16 IBM Java 5 SR6b IBM Java 1.4.2 SR10 BEA JRockit 27.4.0		
		x86 64-bit	Sun Java 5 Update 14 IBM Java 5 SR6b	
Red Hat Enterprise Linux	5.0	x86 32-bit	Sun Java 6 Update 3 Sun Java 5 Update 14 Sun Java 1.4.2 Update 16 IBM Java 5 SR6b IBM Java 1.4.2 SR10 BEA JRockit 27.4.0	GTK
		Power 64-bit	IBM Java 5 SR6b	
	4.0	x86 64-bit	Sun Java 5 Update 14 IBM Java 5 SR6b	
SUSE Linux Enterprise Server	11	x86 32-bit	Sun Java 5 Update 14 IBM Java 5 SR6b	GTK
		x86 64-bit		
		Power 64-bit	IBM Java 5 SR6b	
Ubuntu Long Term Support	9.04	x86 32-bit	Sun Java 5 Update 14 IBM Java 5 SR6b	GTK
		x86 64-bit		
Sun Solaris	10	x86 32-bit	Sun Java 5 Update 14	GTK
		SPARC		
HP-UX	11i v2	ia64	HP-UX Java 5 Update 7	Motif 2.1
IBM AIX	5.3	Power	IBM Java 5 SR6b	Motif 2.1
Apple Mac OS X	10.5	Universal	Apple Java 10.5 Update 1	Carbon
		Universal 32-bit		Cocoa
		Universal 64-bit		

Area 1, 2, 3

▶ **Compiling + Deployment + Launching**

MANIFEST.MF – Execution Environments

Target Platforms

Product configuration

PDE Build

▶ **Area 1-3: “well known” & “often discussed”**



Area 51 - GUI



Not “well known” – but “knowledge is power”

Obvious differences (1/2)

▶ **SWT - native Look&Feel**

▶ **Look**

Widget

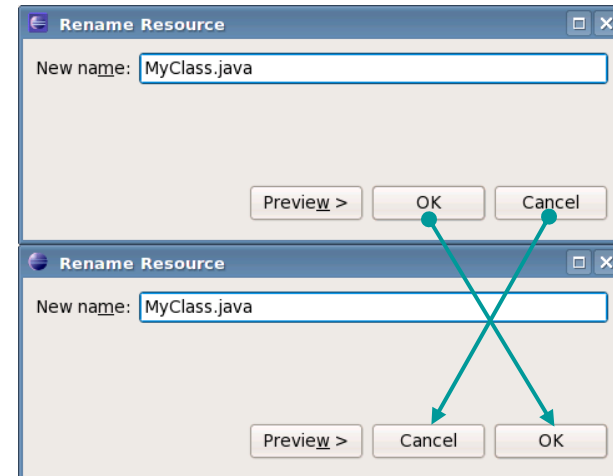
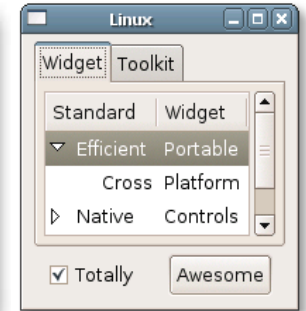
Size&Location: absolute vs. relative

Fonts

Colors

Layout (Dialogs, Wizards, ...)

button order (e.g. 3.4 ↔ 3.5 GTK)



Obvious differences (2/2)

Application

Menu Bar + Menu Items

Native Dialogs – non-java
file chooser,
color picker,
printing, ...

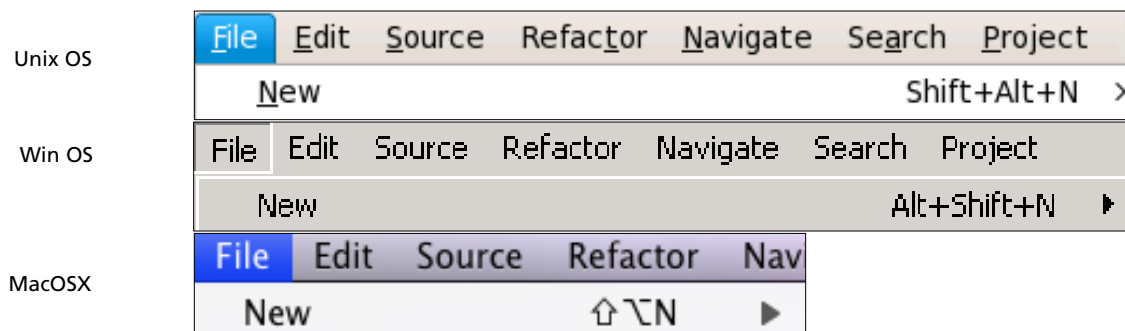
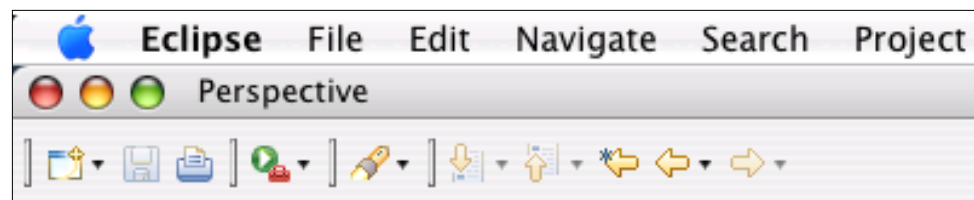
Shortcuts (M1-3 + Key)

Toolbar layout

Tooltips

detached Views

....





Non-obvious differences (1/2)

▶ Feel

setting, extending (multi-)
usage of **modifier keys**
gaining and losing
number of **clicks**
opening and closing
usage of **mouse buttons**

selection

focus

context menus

Non-obvious differences (2/2)

cut,

modifier keys, **gestures**

expanding and collapsing

auto **expansion level**

- ▶ **Performance**
- ▶ **UI is likely to change**
- ▶ **Bugs - platform specific**
caused by RCP, SWT, JRE, OS

copy&paste
drag&drop

trees

Conclusion

▶ Steps to take

1. Don't panic!

- Where there's a will there's a way.

2. Be aware!

- Consider known issues.

3. Specify once & test'em all!

- Use the right tools.



The right tool...

- ▶ **Platform independent**
 - High level actions
 - tough object recognition
- ▶ **easy to maintain tests**
 - readable
 - modular & single sourcing
- ▶ **experienced tester**



Thank You!

▶ **Any questions?**

▶ **Webinar**

<http://live.eclipse.org/node/834>