



## Eclipse Finance Day

Requirements Engineering, Management and Traceability with Eclipse

Jens Trompeter, Member of the board, itemis



# Short facts

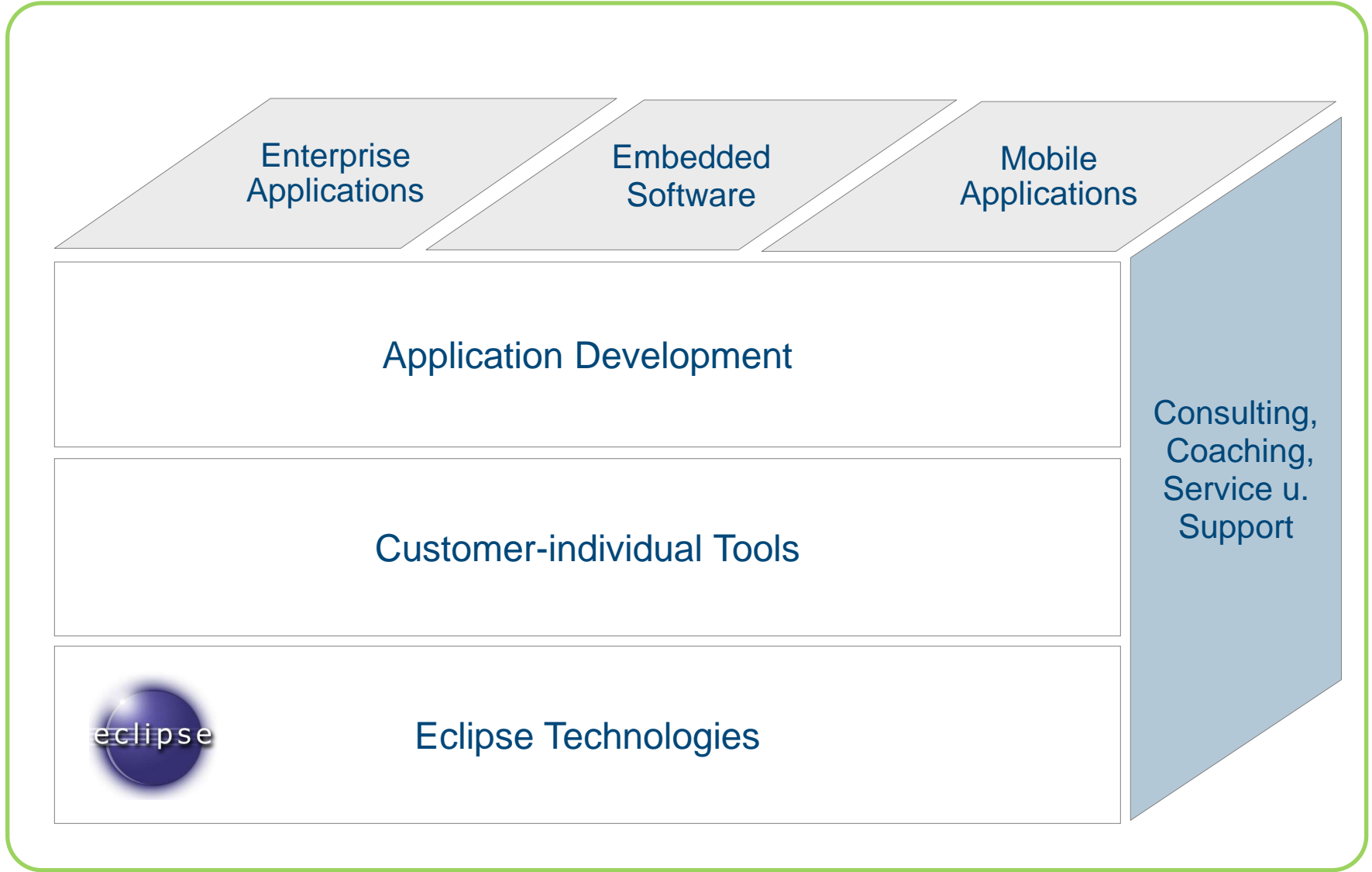
itemis at a glance

- Founded in 2003
- 150 Employees
- Headquarter in Dortmund (Germany)
- Offices in Germany, France and Switzerland
- Strategic Member of the Eclipse Foundation

eclipse



# Service overview



# Requirements Engineering

## Challenges



Often change

Traceability / Impact analysis

Gap between business and IT

Appropriate languages

Large projects

Team-work

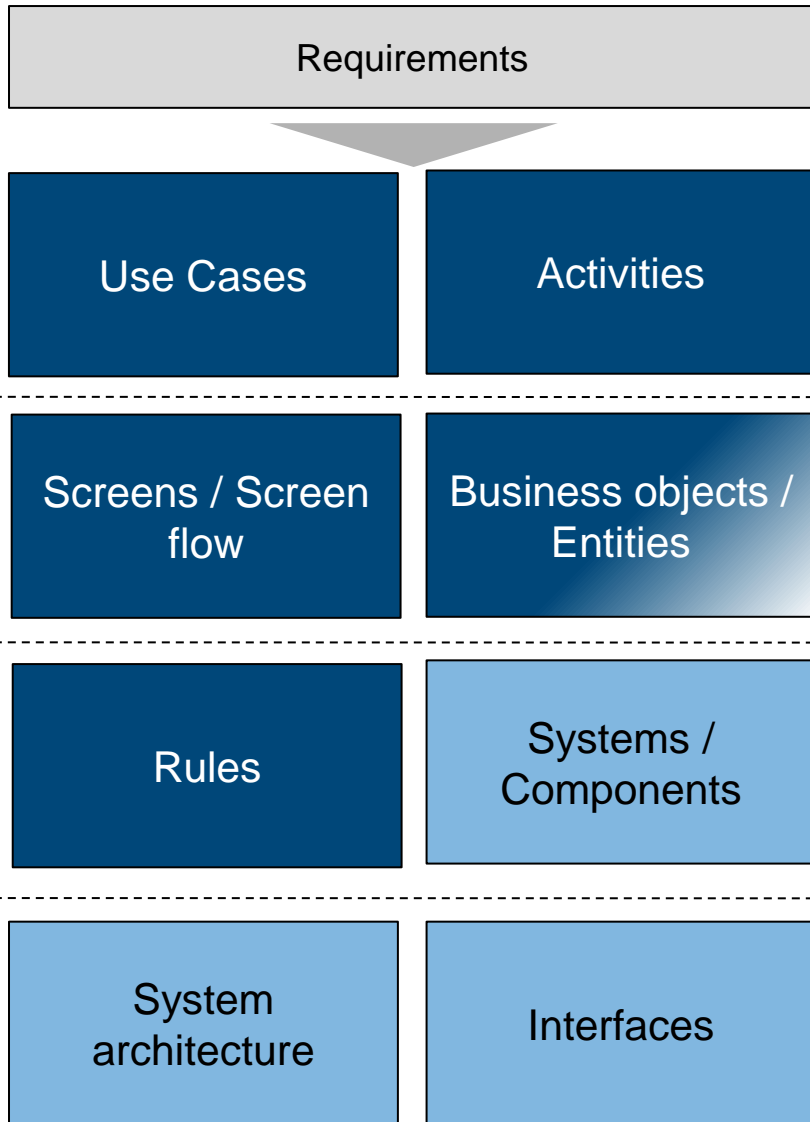
# Requirements Engineering

## Critical factors for success

- Focus on business needs
- Understandability / wording
- Reusability
- Traceability
- Flexibility
- Early validation



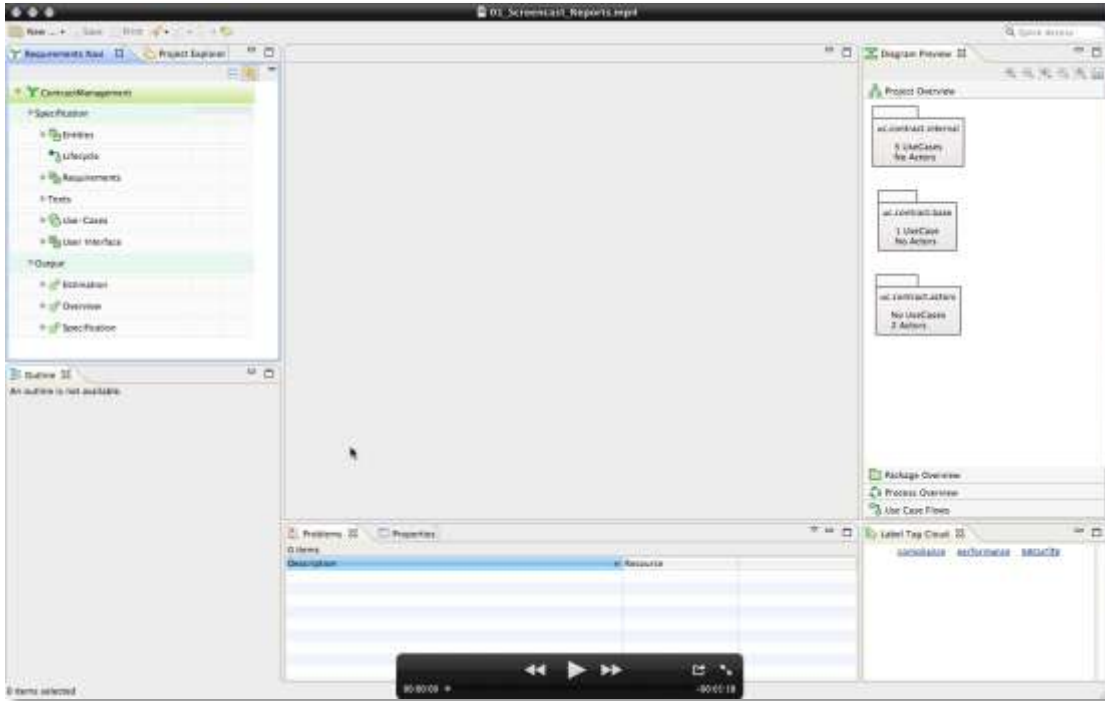
# Object-oriented analysis



- Easy to use
- Consistent
- Flexible
- Good tool-integration
- User-specific outputs

# YAKINDU Requirements

## Report Plugins



Xtext

Xtend

eclipse

BIRT

Business Intelligence  
and Reporting Tools

Specification Documents

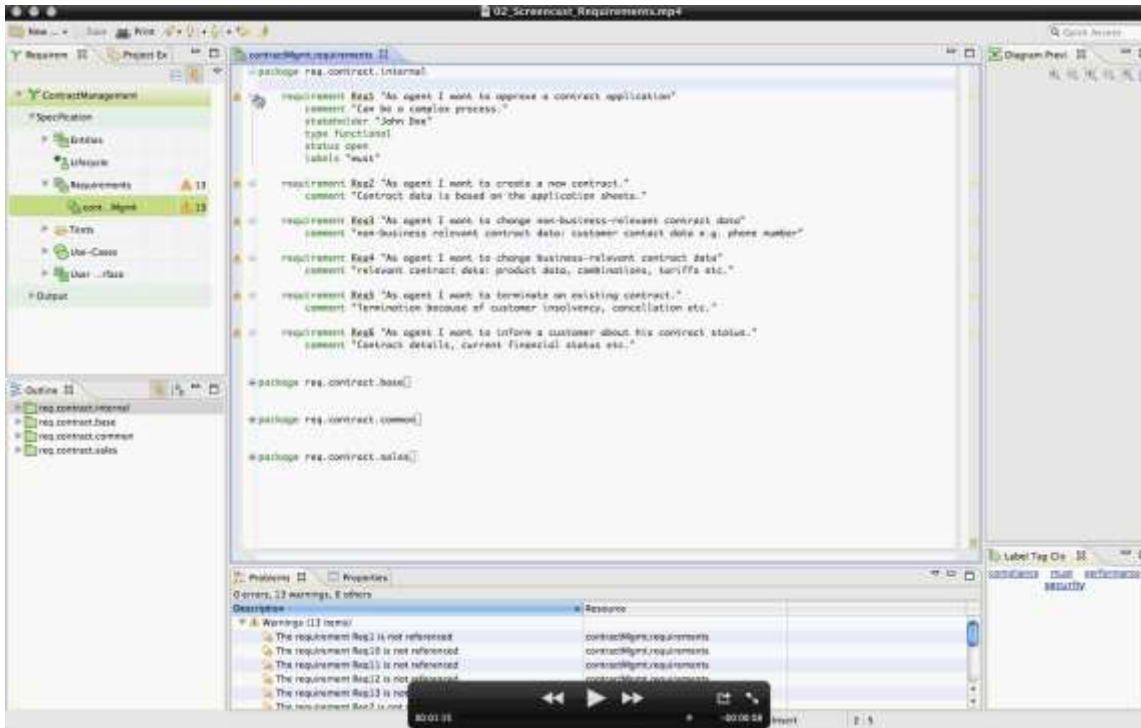
Estimation Tables

Test Plans

...

# YAKINDU Requirements

## High-level requirements



ReqIF



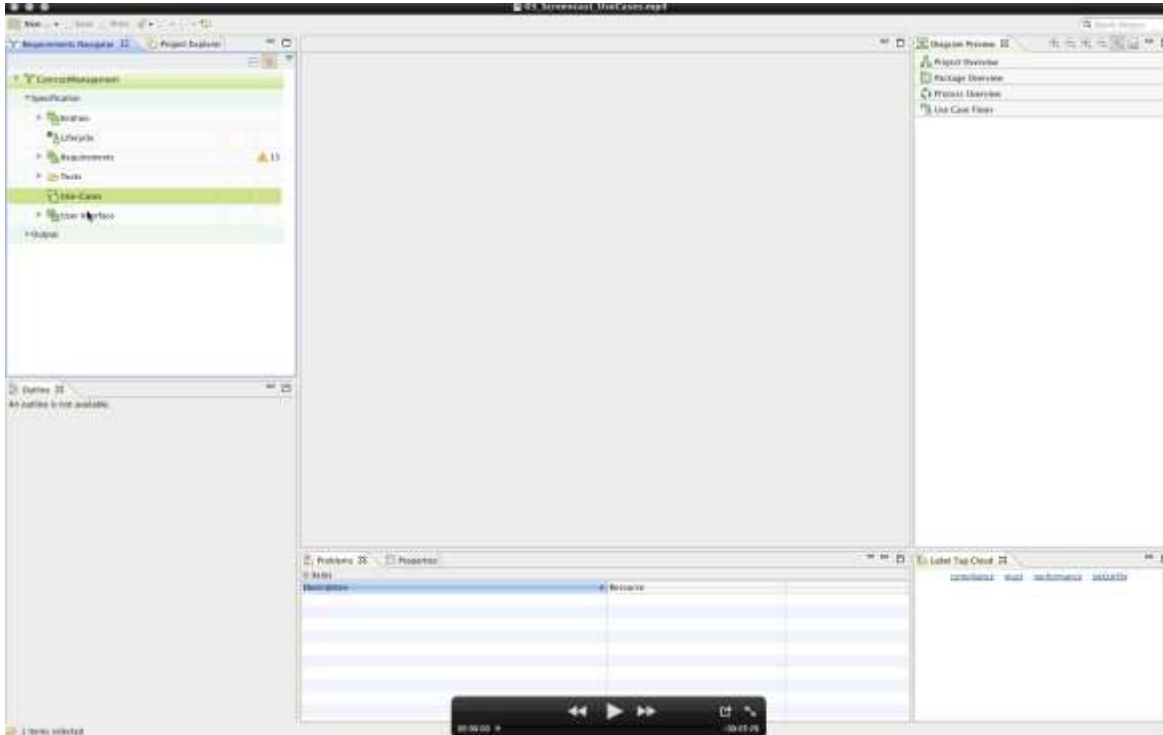
Now refine your requirements ...

...



# YAKINDU Requirements

Refine your requirements with use cases



Tracing of requirements  
Very efficient editing  
Live visualization



# Xtext



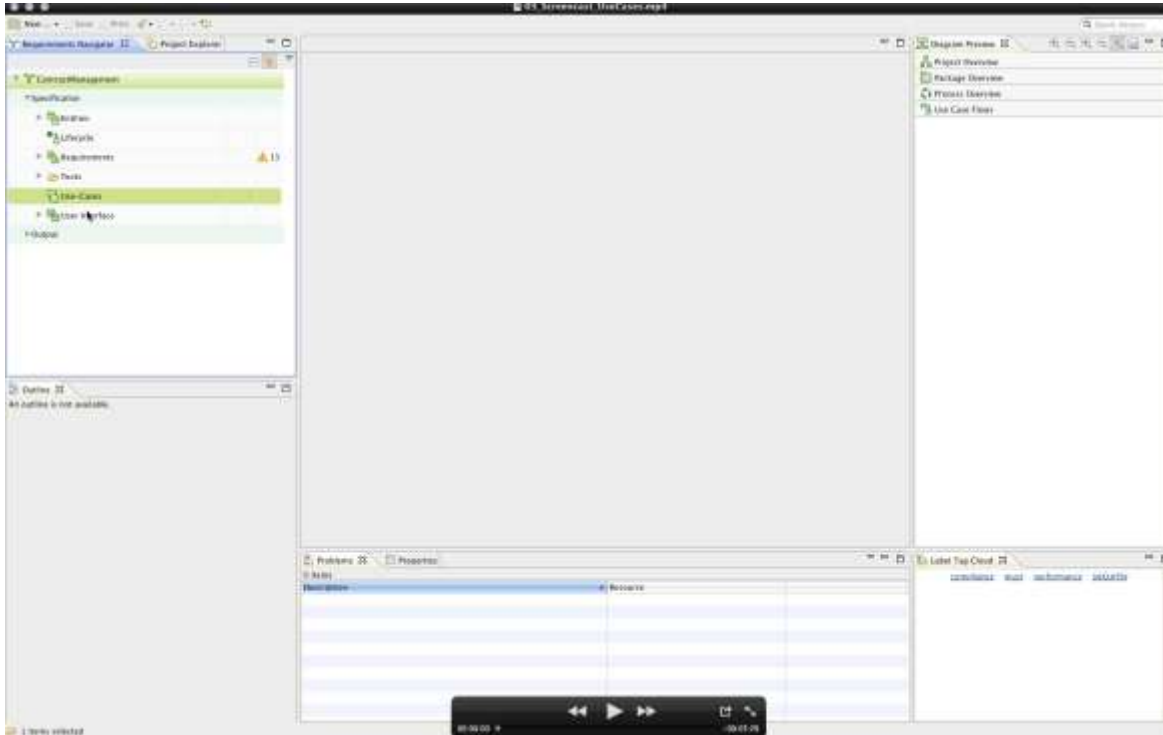
**Graphical Editing Framework  
Draw2D**

# KIELER



# YAKINDU Requirements

Combine use cases with entities



Cross-referencing between DSLs

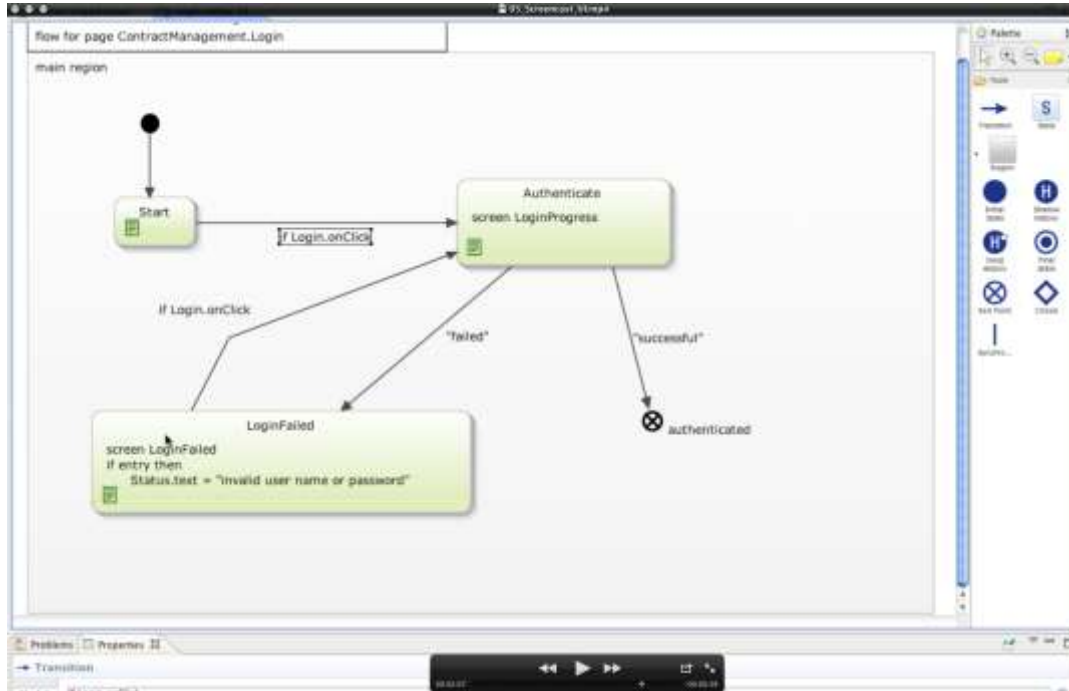
Easy navigation

Rename refactoring



# YAKINDU Requirements

## User interfaces



Statechart Tools

Integrate with:

**balsamiq**



**WireframeSketcher**

- Describe pages and dialogs
- Refer to screens
- Create page flow diagrams

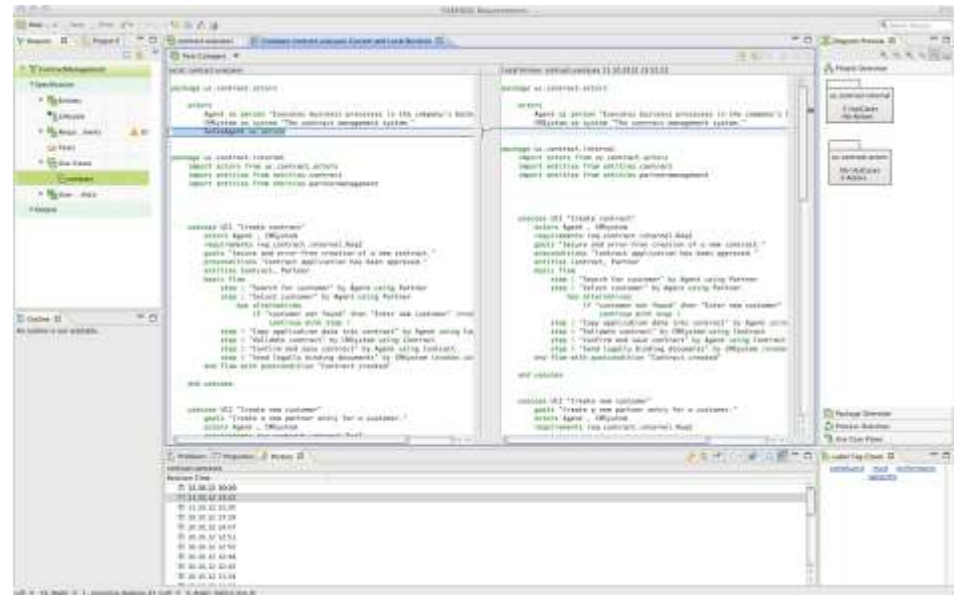
# YAKINDU Requirements



## Team collaboration



- Standard Version Control Systems
- Split into several files to reduce conflicts
- Easy compare, diff and merge
- Recent changes
- User-specific reports
- Integration with Wikis



# Summary

- **Efficiency**

- Lightweight text-editors
- Automatic visualization
- Early validations
- Team-oriented

- **Flexibility**

- Adjustable languages
- Specific reports
- Integration with other tools



Xtext



eclipse



Jens Trompeter

Mobile +49-151-10860456

[jens.trompeter@itemis.de](mailto:jens.trompeter@itemis.de)

For Switzerland please contact:

Serano Colameo

Mobile: +41-79-425 68 63

[serano.colameo@itemis.ch](mailto:serano.colameo@itemis.ch)

itemis Schweiz GmbH | TECHNOPARK® Aargau | Dorfstrasse 69 | 5210 Windisch - Schweiz

itemis AG | Am Brambusch 15-24 | D-44536 Lünen | [www.itemis.de](http://www.itemis.de)

