

Modeling Working Group  
Face to Face Meeting  
Friday, November 5, 2010

# Agenda

- Presentation of Project Plan
- Formation of Working Group
  - Including how to organize resources
- Next Steps

# Eclipse Industry Working Group

- Considerations
  - How are decisions made within the group?
  - What is the criteria for new participants?
  - How to share intellectual property?
  - How are resources shared?
  - How do you ensure long-term structure?

# Eclipse Industry Working Group

- Potential Models
  - Eclipse Industry Working Group
  - Industry Consortium
  - Main contractor
  - New Company
  - Direct Contracts

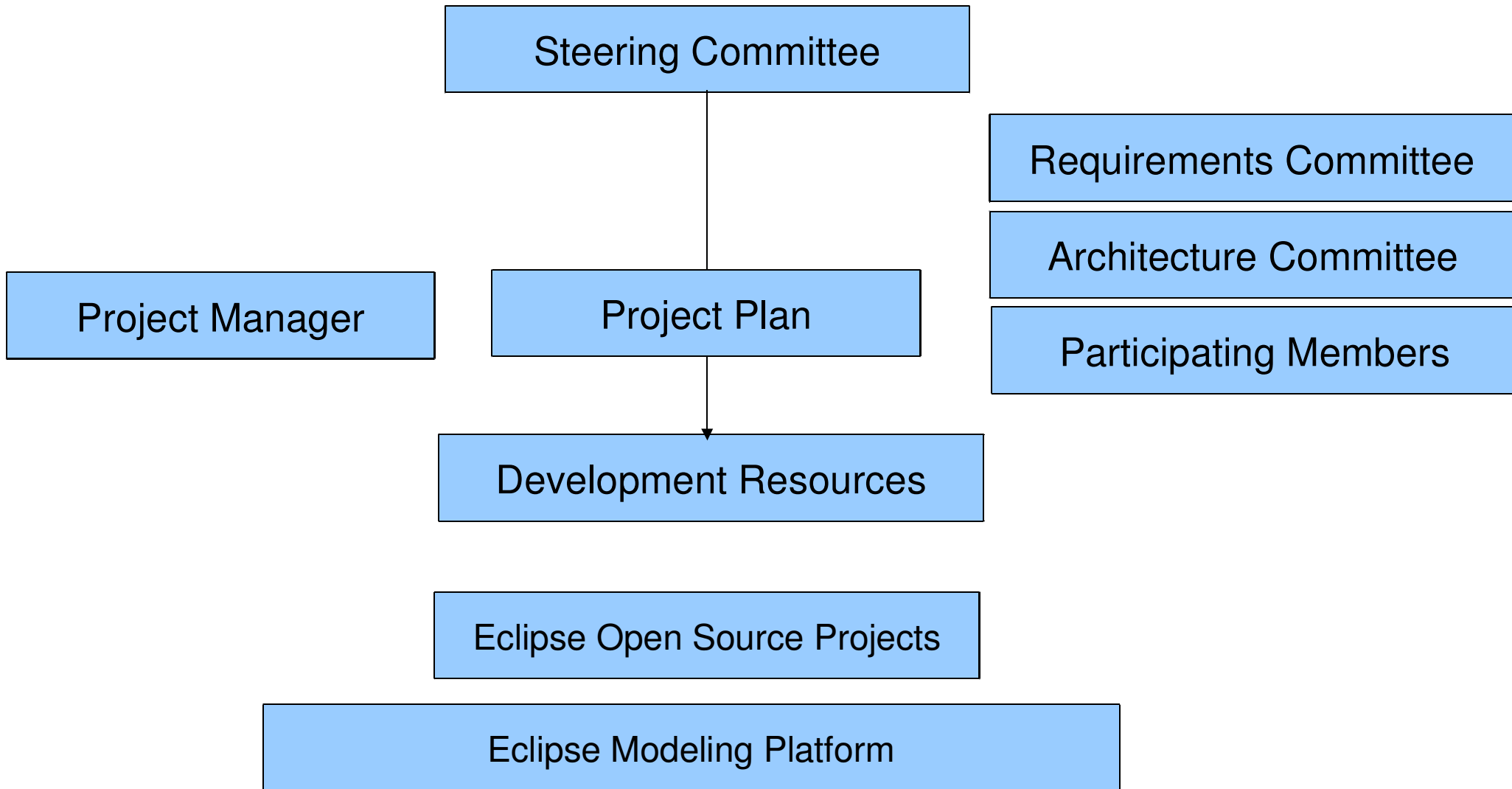
# Sharing Intellectual Property

- Eclipse Foundation Members agree to following Eclipse IP Policy.
- IP Policy states the terms of how contributions are submitted.
- Every company is following the same terms.

# Governance and Decision Making

- Industry Working Group Charter states the following:
  - Purpose/Scope
  - Decision making structure
  - Participation guidelines, including new and existing members
- An Industry Working Group is a formal structure within the Eclipse Foundation and follows the Industry Working Group Process Guidelines.

# Organization Governance



# Steering Committee

- Membership
  - Organizations that are providing the significant portion of the resources.
  - Steering Committee would set the level of investment each member needs to provide on an annual basis.
  - New members would need to meet these investment levels and agree to existing roadmap.
- Decision making
  - Finalize the roadmap on an annual basis
  - Prioritize requirements
  - Allocate resources
  - Make future changes to the governance and charter



# Sub-committee

- Architecture Committee
  - Guide the technical architecture
  - Membership would include technical experts appointed by Steering Committee. Could include other participating members.
- Requirements committee
  - Plan the roadmap and set future priorities
  - Membership would include steering committee representatives.

# Participating Members

- Other organizations will be important to the success of the working group.
  - Implementation services
  - Testing services
  - Requirements from different industries
  - Extended ecosystem
- Participating Members would be members of the Industry Working Group
- Participating Members would need to adhere to specified guidelines to participate.
  - Ex. Meeting attendance, written feedback, etc.

# Industry Working Group Operations

- Meetings will be open to only the members of the working group.
- Output will be publicly available on the wiki.
- New members will need to agree to the participation guidelines before joining the working group.

# Next Steps

- Level of resource commitment from each organization
- Form Industry Working Group
  - Organization need to join the Eclipse Foundation
  - Finalize the Industry Working Group charter
- Adjust and finalize project plan based on the resources available
- Establish contracts with implementers
- Recruit new participants